

KEY WEST, FLORIDA

TACAN Y RWY 32

TACAN NQX Chan 78	APCH CRS 335°	Rwy Idg TDZE Arprt Elev	7000 4 6
-----------------------------	-------------------------	-------------------------------	-------------------------------------

[USN]

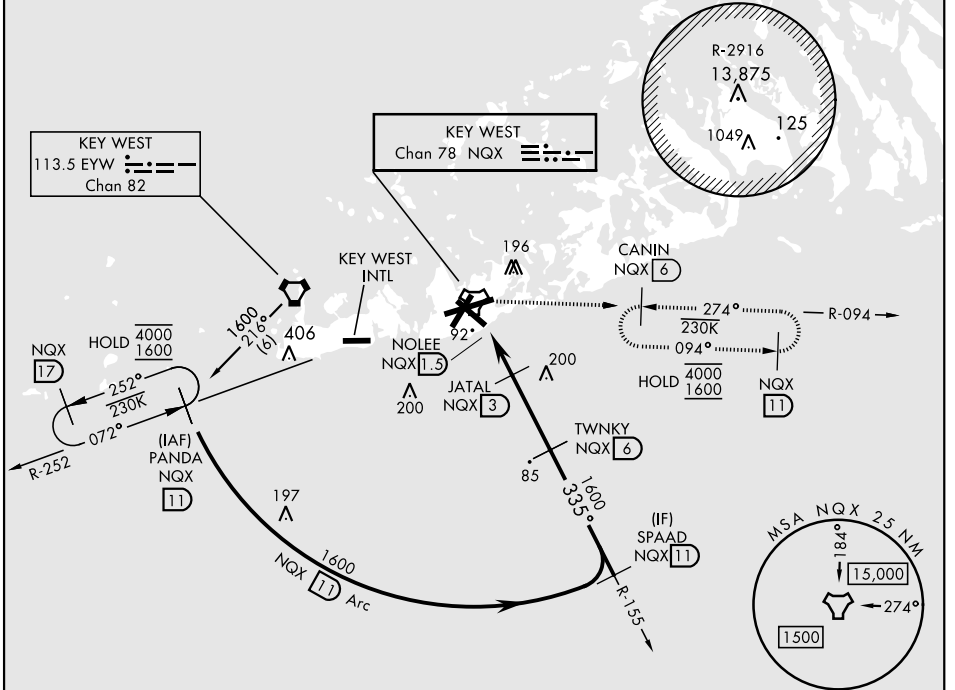
KEY WEST NAS (BOCA CHICA FLD) (KNQX)

▼ MISSED APPROACH: Climb to 500. Then climbing right turn to 1600, intercept NQX R-094 to CANIN (NQX R-094/6 DME) and hold.

ATIS ★ 307.025	NAVY KEY WEST APP CON 124.025 313.7	NAVY KEY WEST TOWER ★ 118.575 340.25	GND CON 121.7 336.45	CLNC DEL 121.2 357.4	ASR/PAR
--------------------------	---	--	--------------------------------	--------------------------------	---------

CAUTION: Short Intermediate Segment

CAUTION: Balloon with strobe light on unmarked cable to 14,000 in R-2916.

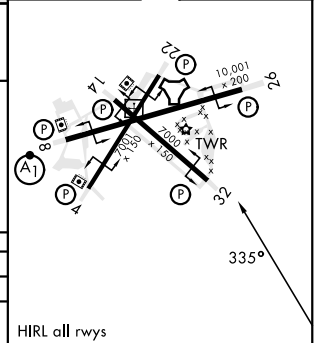
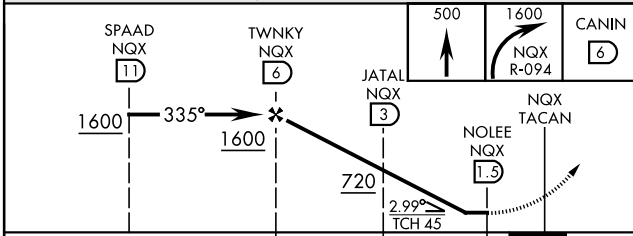


SE-3, 25 DEC 2025 to 22 JAN 2026

SE-3, 25 DEC 2025 to 22 JAN 2026

EMERG SAFE ALT 100 NM 15,000

ELEV	6	TDZE	4
------	---	------	---



CATEGORY	A	B	C	D
S-32	360-1	356	(400-1)	
CIRCLING	440-1 434 (500-1)	500-1 494 (500-1)	500-1½ 494 (500-1½)	560-2 554 (600-2)

HIRL all rwys

KEY WEST, FLORIDA

24°34'N-81°41'W

KEY WEST NAS (BOCA CHICA FLD) (KNQX)

Orig 23FEB23

TACAN Y RWY 32