

WAAS CH <b>70611</b> <b>W04B</b>	APP CRS <b>046°</b>	Rwy Ldg <b>7200</b> TDZE <b>260</b> Apt Elev <b>266</b>
--	------------------------	---

# RNAV (GPS) RWY 4R

BILL AND HILLARY CLINTON NTL/ADAMS FLD (LIT)

RNP APCH-GPS.

**⚠** Rwy 4R helicopter visibility reduction below RVR 4000 NA. For uncompensated Baro-VNAV systems, LNAV/VNAV NA below -15°C or above 54°C. Simultaneous approach authorized. LNAV procedure NA during simultaneous operations. Use of FD or AP required during simultaneous operations. For inop ALS, increase LPV all Cats visibility to RVR 4500, LNAV/VNAV all Cats visibility to 1/2 SM and LNAV Cat A/B visibility to RVR 5500 and Cat C/D to 1/2 SM.



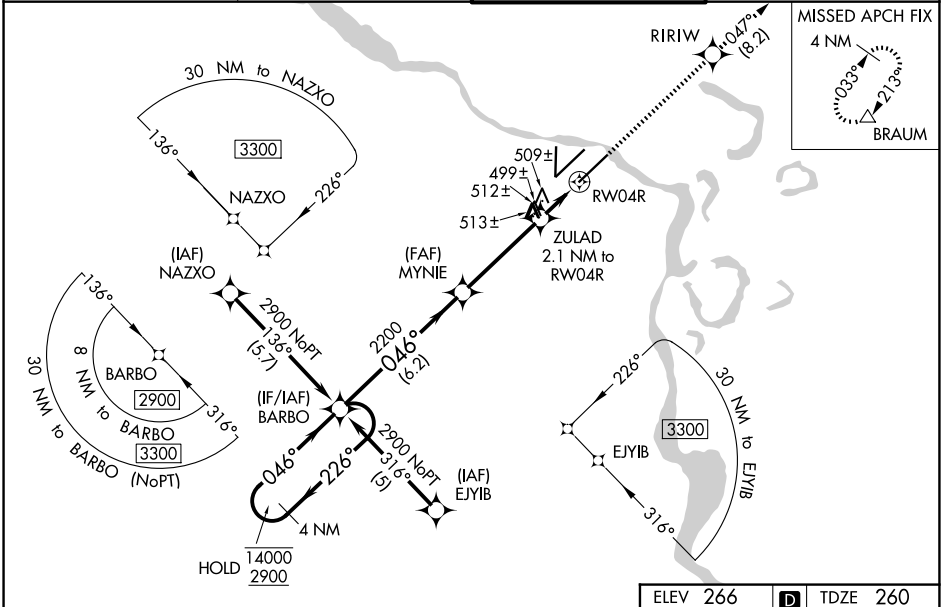
MISSED APPROACH:  
Climb to 2900 direct RIRIW and on track 047° to BRAUM and hold.

D-ATIS  
**125.65**

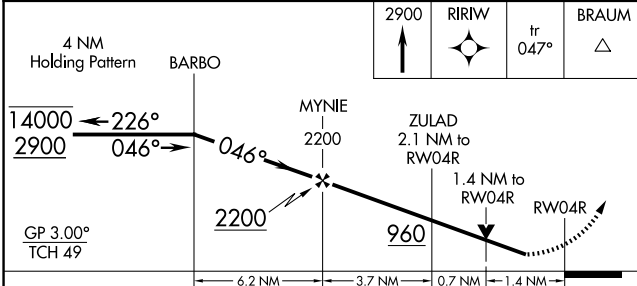
LITTLE ROCK APP CON  
**135.4 353.6**

ADAMS TOWER  
**118.7 257.8**

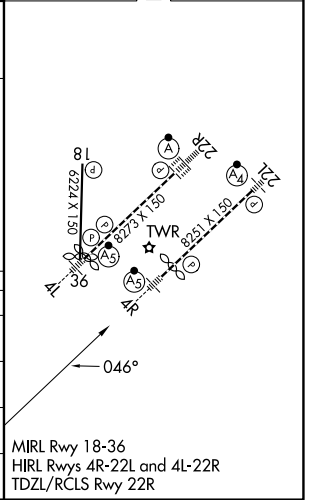
GND CON  
**121.9 339.8**



ELEV 266 **D** TDZE 260



CATEGORY	A	B	C	D
LPV DA	574/40		314 (400-3/4)	
LNAV/VNAV DA	756/50		496 (500-1)	
LNAV MDA	760/40	500 (500-3/4)	760/50	500 (500-1)
CIRCLING	820-1 554 (600-1)	1000-1 734 (800-1)	1180-2 3/4 914 (1000-2 3/4)	1180-3 914 (1000-3)



SC-1, 25 DEC 2025 to 22 JAN 2026

SC-1, 25 DEC 2025 to 22 JAN 2026