

DLAMP EIGHT ARRIVAL (RNAV) Arrival Routes

LOUISVILLE APP CON
132.075 327.0
D-ATIS
118.725

RNAV 1 - DME/DME/IRU or GPS.

RADAR required.

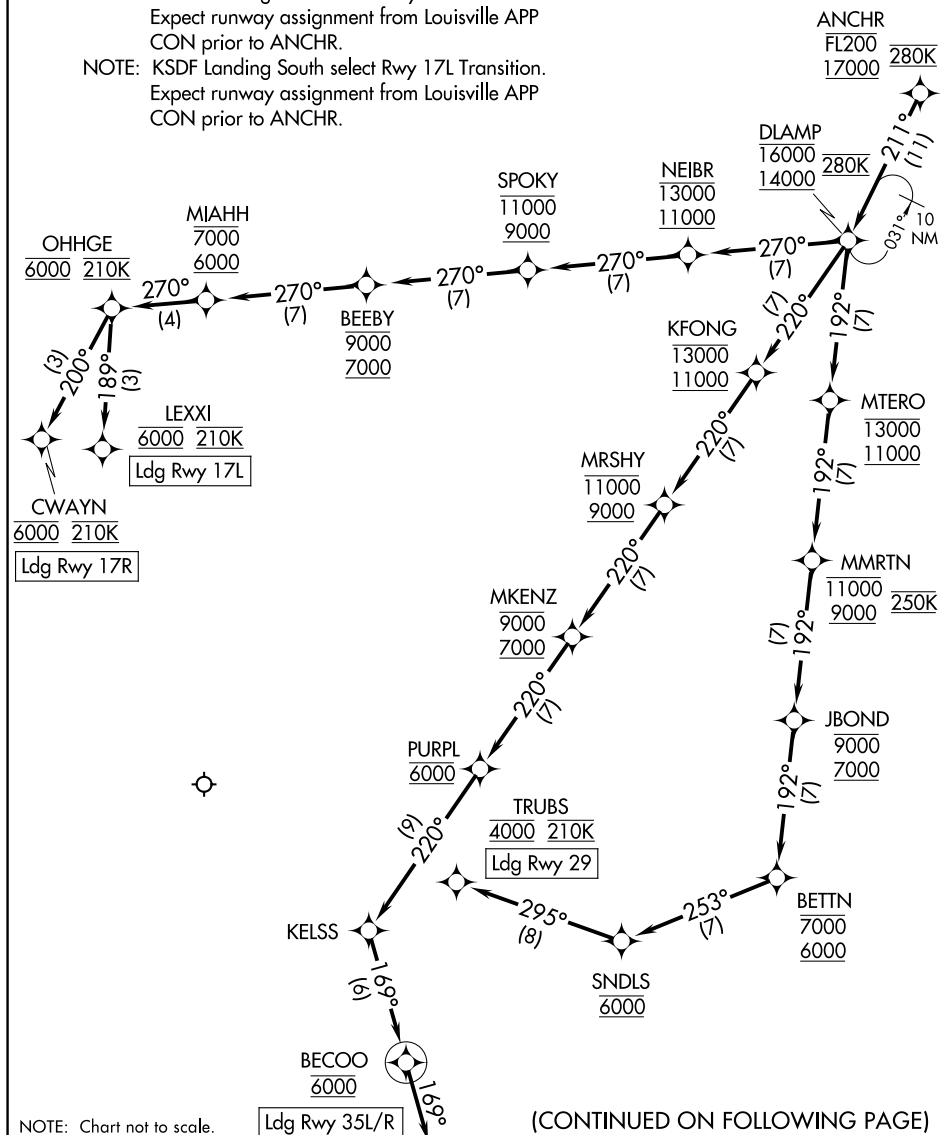
NOTE: Jet aircraft only.

NOTE: KSDF Landing North select Rwy 35R Transition.

Expect runway assignment from Louisville APP CON prior to ANCHR.

NOTE: KSDF Landing South select Rwy 17L Transition.

Expect runway assignment from Louisville APP CON prior to ANCHR.



NOTE: Chart not to scale.

(CONTINUED ON FOLLOWING PAGE)

DLAMP EIGHT ARRIVAL (RNAV) Arrival Routes

LOUISVILLE, KENTUCKY

(ANCHR.DLAMP8) 11JUL24

LOUISVILLE MUHAMMAD ALI INTL (SDF)

SE-1, 25 DEC 2025 to 22 JAN 2026

ARRIVAL ROUTE DESCRIPTION

From ANCHR on track 211° to cross DLAMP between 14000 and 16000 and at 280K.

LANDING RUNWAY 17L: From DLAMP on track 270° to cross NEIBR between 11000 and 13000, then on track 270° to cross SPOKY between 9000 and 11000, then on track 270° to cross BEEBY between 7000 and 9000, then on track 270° to cross MIAHH between 6000 and 7000, then on track 270° to cross OHHGE at 6000 and at 210K, then on track 189° to cross LEXXI at 6000 and at 210K. Expect ILS or LOC Rwy 17L approach.

LANDING RUNWAY 17R: From DLAMP on track 270° to cross NEIBR between 11000 and 13000, then on track 270° to cross SPOKY between 9000 and 11000, then on track 270° to cross BEEBY between 7000 and 9000, then on track 270° to cross MIAHH between 6000 and 7000, then on track 270° to cross OHHGE at 6000 and at 210K, then on track 200° to cross CWAYN at 6000 and at 210K. Expect ILS or LOC Rwy 17R approach.

LANDING RUNWAY 29: From DLAMP on track 192° to cross MTERO between 11000 and 13000, then on track 192° to cross MMRTN between 9000 and 11000 and at 250K, then on track 192° to cross JBOND between 7000 and 9000, then on track 192° to cross BETTN between 6000 and 7000, then on track 253° to cross SNDLS at 6000, then on track 295° to cross TRUBS at 4000 and at 210K. Expect LOC Rwy 29 approach.

LANDING RUNWAYS 35L/R: From DLAMP on track 220° to cross KFONG between 11000 and 13000, then on track 220° to cross MRSHY between 9000 and 11000, then on track 220° to cross MKENZ between 7000 and 9000, then on track 220° to cross PURPL at 6000, then on track 220° to KELSS, then on track 169° to cross BECOO at 6000, then on track 169°. Expect radar vectors to final approach course.