

LOC/DME I-JJM <b>110.55</b> Chan 42 (Y)	APP CRS <b>350°</b>	Rwy Ldg TDZE Apt Elev <b>7800</b> <b>479</b> <b>501</b>
---	------------------------	--

# ILS RWY 35R (CAT II & III)

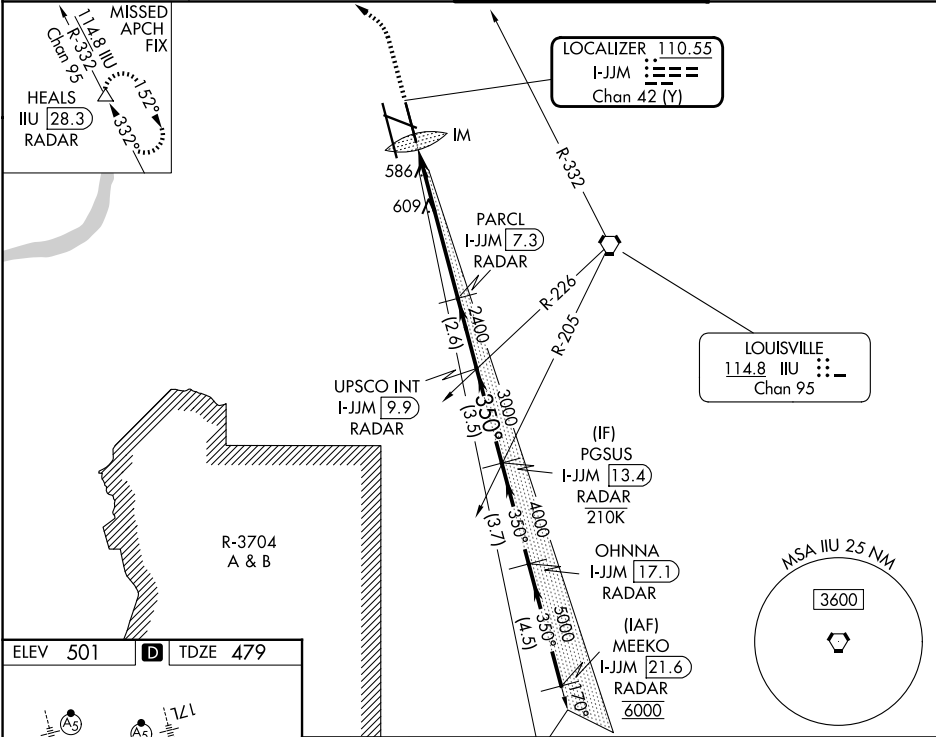
LOUISVILLE MUHAMMAD ALI INTL (SDF)

Simultaneous approach authorized. Cat II: RVR 1000 authorized with specific OPSPEC, MSPEC, or LOA approval and use of autoland or HUD to touchdown.

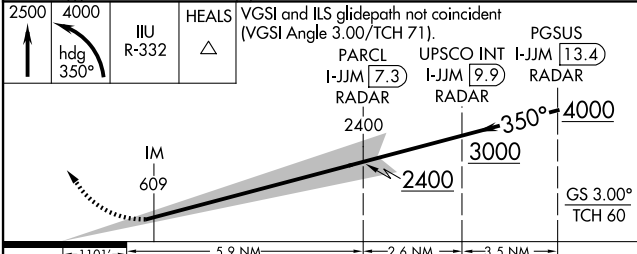
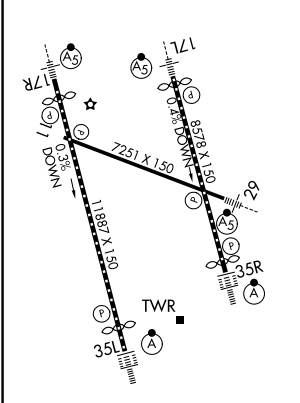


MISSED APPROACH: Climb to 2500 then climbing left turn to 4000 on heading 350° and on IIU VORTAC R-332 to HEALS/28.3 DME/RADAR and hold.

D-ATIS <b>118.725</b>	LOUISVILLE APP CON <b>132.075 327.0</b>	LOUISVILLE TOWER <b>124.2 257.8</b>	GND CON <b>121.7 348.6</b>
--------------------------	--	--	-------------------------------



ELEV 501	<b>D</b>	TDZE 479
----------	----------	----------



CATEGORY	A	B	C	D
S-ILS 35R	CAT II RA 100/12 100 DA 579			
S-ILS 35R	CAT III RVR 06			

## CATEGORY II & III ILS - SPECIAL AIRCREW & AIRCRAFT CERTIFICATION REQUIRED

SE-1, 25 DEC 2025 to 22 JAN 2026

SE-1, 25 DEC 2025 to 22 JAN 2026