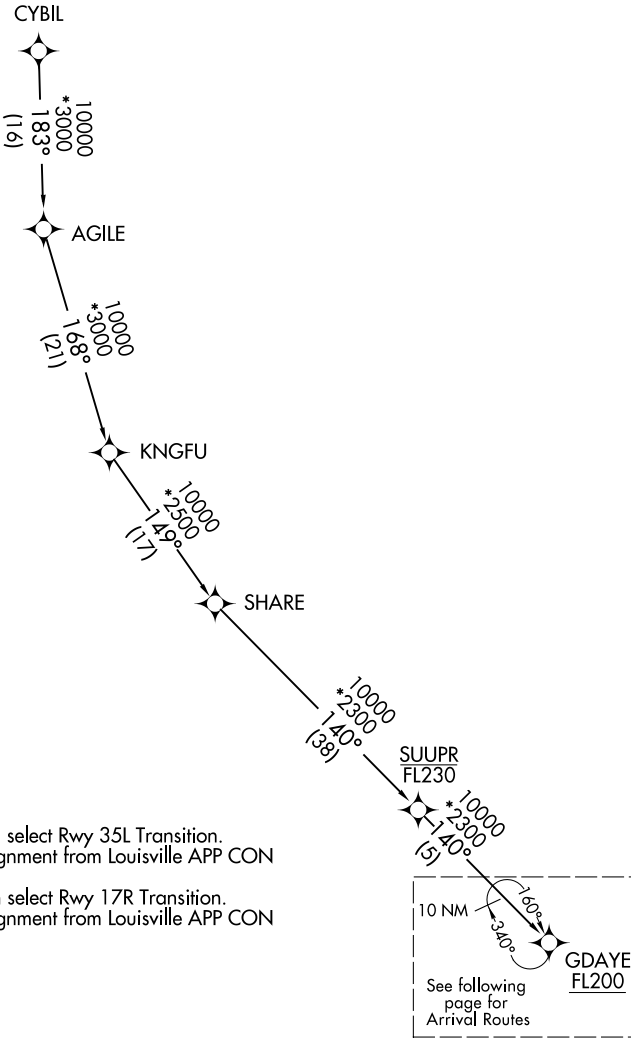


JMONY TWO ARRIVAL (RNAV) Transition Routes

LOUISVILLE, KENTUCKY

LOUISVILLE APP CON  
132.075 327.0  
SDF D-ATIS  
118.725  
LOU ATIS  
124.15

RNAV 1 - DME/DME/IRU or GPS.  
RADAR required.



NOTE: Jet aircraft only.  
NOTE: KSDf landing north select Rwy 35L Transition.  
Expect runway assignment from Louisville APP CON prior to LISZA.  
NOTE: KSDf landing south select Rwy 17R Transition.  
Expect runway assignment from Louisville APP CON prior to LISZA.

NOTE: Chart not to scale.

(CONTINUED ON FOLLOWING PAGE)

CYBIL TRANSITION (CYBIL.JMONY2)  
SHARE TRANSITION (SHARE.JMONY2)

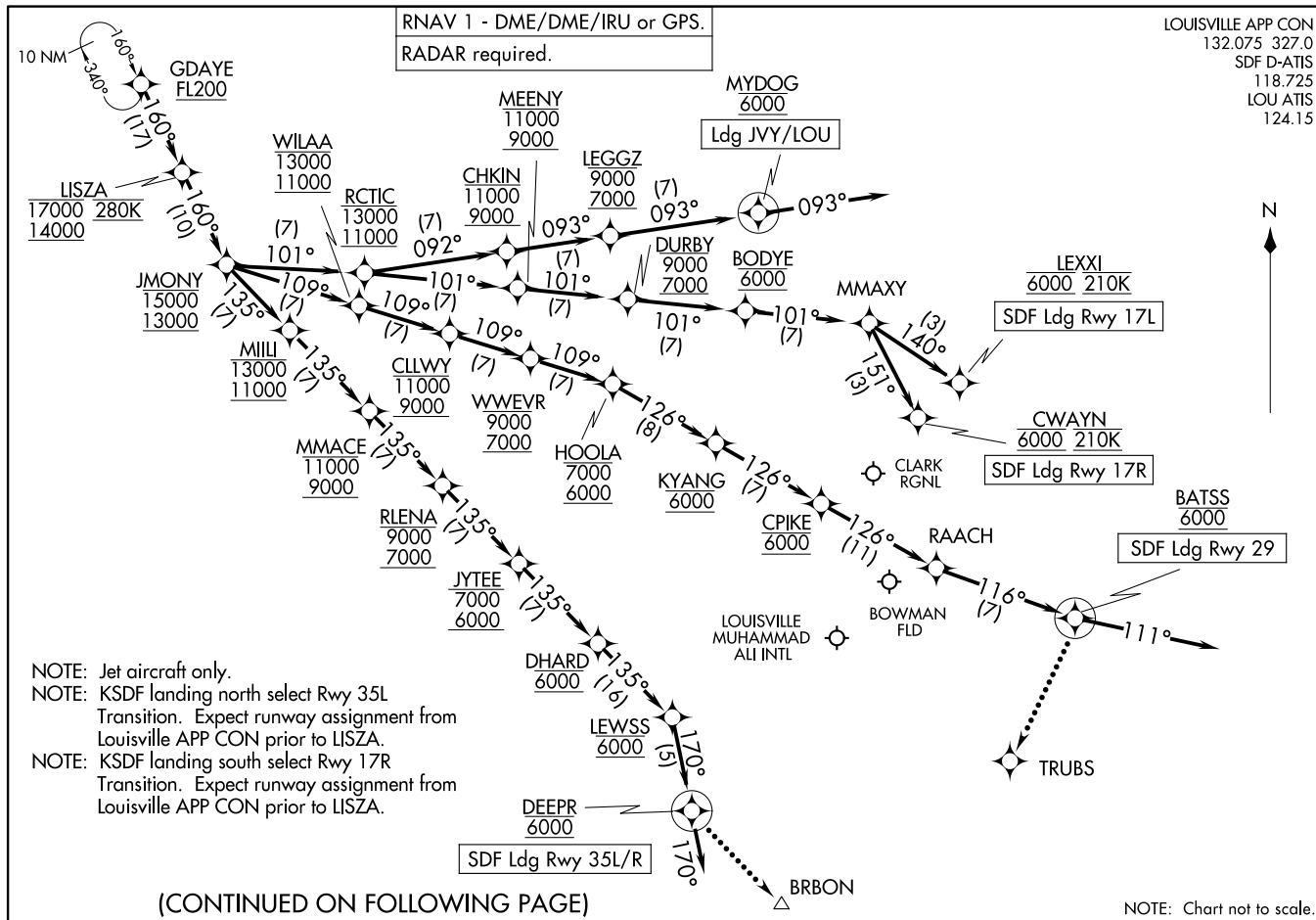
JMONY TWO ARRIVAL (RNAV) Transition Routes

LOUISVILLE, KENTUCKY

(JMONT.JMONT2) 20FEB25

## JMONT TWO ARRIVAL (RNAV) Arrival Routes

LOUISVILLE, KENTUCKY



(JMONT.JMONT2) 25051

AL-239 (FAA)

LOUISVILLE, KENTUCKY

ARRIVAL ROUTE DESCRIPTION

SDF: From GDAYE on track 160° to cross LISZA between 14000 and 17000 and at 280K, then on track 160° to cross JMONY between 13000 and 15000.

LANDING SDF RUNWAY 17L: From JMONY on track 101° to cross RCTIC between 11000 and 13000, then on track 101° to cross MEENY between 9000 and 11000, then on track 101° to cross DURBY between 7000 and 9000, then on track 101° to cross BODYE at 6000, then on track 101° to MMAXY, then on track 140° to cross LEXXI at 6000 and at 210K. Expect ILS or LOC Rwy 17L approach.

LANDING SDF RUNWAY 17R: From JMONY on track 101° to cross RCTIC between 11000 and 13000, then on track 101° to cross MEENY between 9000 and 11000, then on track 101° to cross DURBY between 7000 and 9000, then on track 101° to cross BODYE at 6000, then on track 101° to MMAXY, then on track 151° to cross CWAYN at 6000 and at 210K. Expect ILS or LOC Rwy 17R approach.

LANDING SDF RUNWAY 29: From JMONY on track 109° to cross WILAA between 11000 and 13000, then on track 109° to cross CLLWY between 9000 and 11000, then on track 109° to cross WWEVR between 7000 and 9000, then on track 109° to cross HOOLA between 6000 and 7000, then on track 126° to cross KYANG at 6000, then on track 126° to cross CPIKE at 6000, then on track 126° to RAACH, then on track 116° to cross BATSS at 6000, then on track 111°. Expect RADAR vectors to final approach course.

LANDING SDF RUNWAYS 35L/R: From JMONY on track 135° to cross MIILI between 11000 and 13000, then on track 135° to cross MMACE between 9000 and 11000, then on track 135° to cross RLENA between 7000 and 9000, then on track 135° to cross JYTEE between 6000 and 7000, then on track 135° to cross DHARD at 6000, then on track 135° to cross LEWSS at 6000, then on track 170° to cross DEEPR at 6000, then on track 170°. Expect RADAR vectors to final approach course.

LANDING JVY/LOU: From GDAYE on track 160° to cross LISZA between 14000 and 17000 and at 280K, then on track 160° to cross JMONY between 13000 and 15000, then on track 101° to cross RCTIC between 11000 and 13000, then on track 092° to cross CHKIN between 9000 and 11000, then on track 093° to cross LEGGZ between 7000 and 9000, then on track 093° to cross MYDOG at 6000, then on track 093°. Expect RADAR vectors to final approach course.

LOST COMMUNICATIONS:  
RUNWAYS 35L/R: After DEEPR, proceed to BRBON, then proceed on the ILS or LOC Rwy 35L approach or RNAV (GPS) Y Rwy 35L approach.  
RUNWAY 29: After BATSS, proceed to TRUBS, then proceed on the RNAV (GPS) Rwy 29 approach.