

# RNAV (RNP) Z RWY 35L

LOUISVILLE MUHAMMAD ALI INTL (SDF)

|             |          |              |
|-------------|----------|--------------|
| APP CRS     | Rwy Ldg  | <b>10000</b> |
| <b>350°</b> | TDZE     | <b>464</b>   |
|             | Apt Elev | <b>501</b>   |

RNP AR APCH - GPS.



For uncompensated Baro-VNAV systems, procedure NA below -10°C or above 54°C. Simultaneous approach authorized. For inop ALS, increase RNP 0.11 all Cats visibility to RVR 4500.

ALSF-2



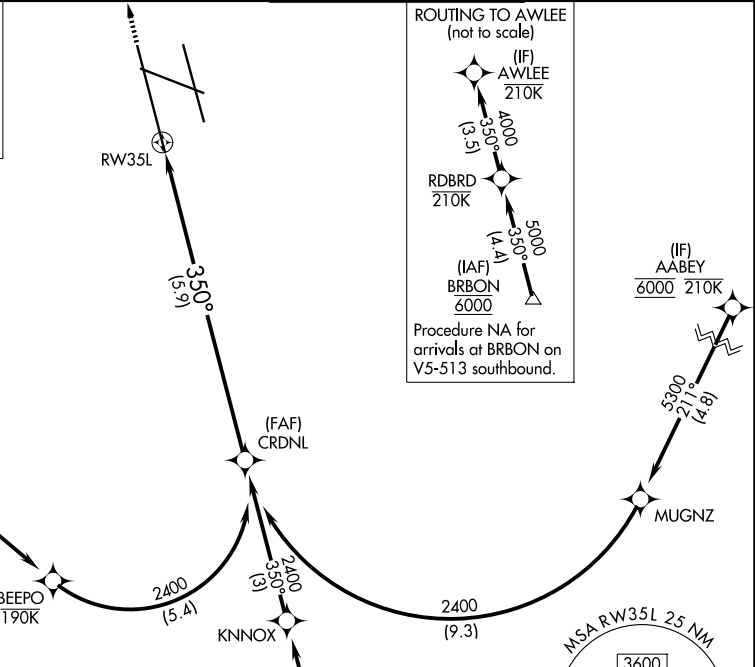
MISSED APPROACH: Climb to 1000 then climbing left turn to 4000 direct DAMEN and hold.

|                          |                                            |                                        |                               |
|--------------------------|--------------------------------------------|----------------------------------------|-------------------------------|
| D-ATIS<br><b>118.725</b> | LOUISVILLE APP CON<br><b>132.075 327.0</b> | LOUISVILLE TOWER<br><b>124.2 257.8</b> | GND CON<br><b>121.7 348.6</b> |
|--------------------------|--------------------------------------------|----------------------------------------|-------------------------------|

MISSED APCH FIX

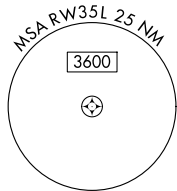
4 NM

DAMEN

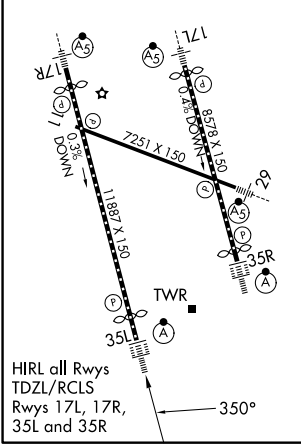


ROUTING TO AWLEE (not to scale)

Procedure NA for arrivals at BRBON on V5-513 southbound.



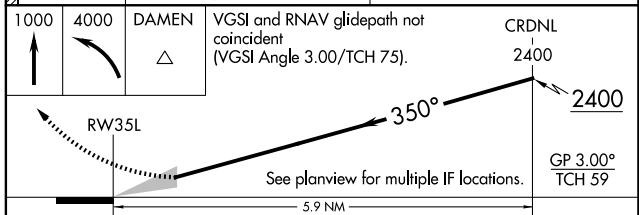
ELEV 501 TDZE 464



R-3704 A & B

(IF) AWLEE 210K SEE INSET FOR ROUTING TO AWLEE

VGSI and RNAV glidepath not coincident (VGSI Angle 3.00/TCH 75).



|             |   |        |             |   |
|-------------|---|--------|-------------|---|
| CATEGORY    | A | B      | C           | D |
| RNP 0.11 DA |   | 769/24 | 305 (300-½) |   |
| RNP 0.30 DA |   | 897/40 | 433 (400-¾) |   |

## AUTHORIZATION REQUIRED

SE-1, 25 DEC 2025 to 22 JAN 2026

SE-1, 25 DEC 2025 to 22 JAN 2026