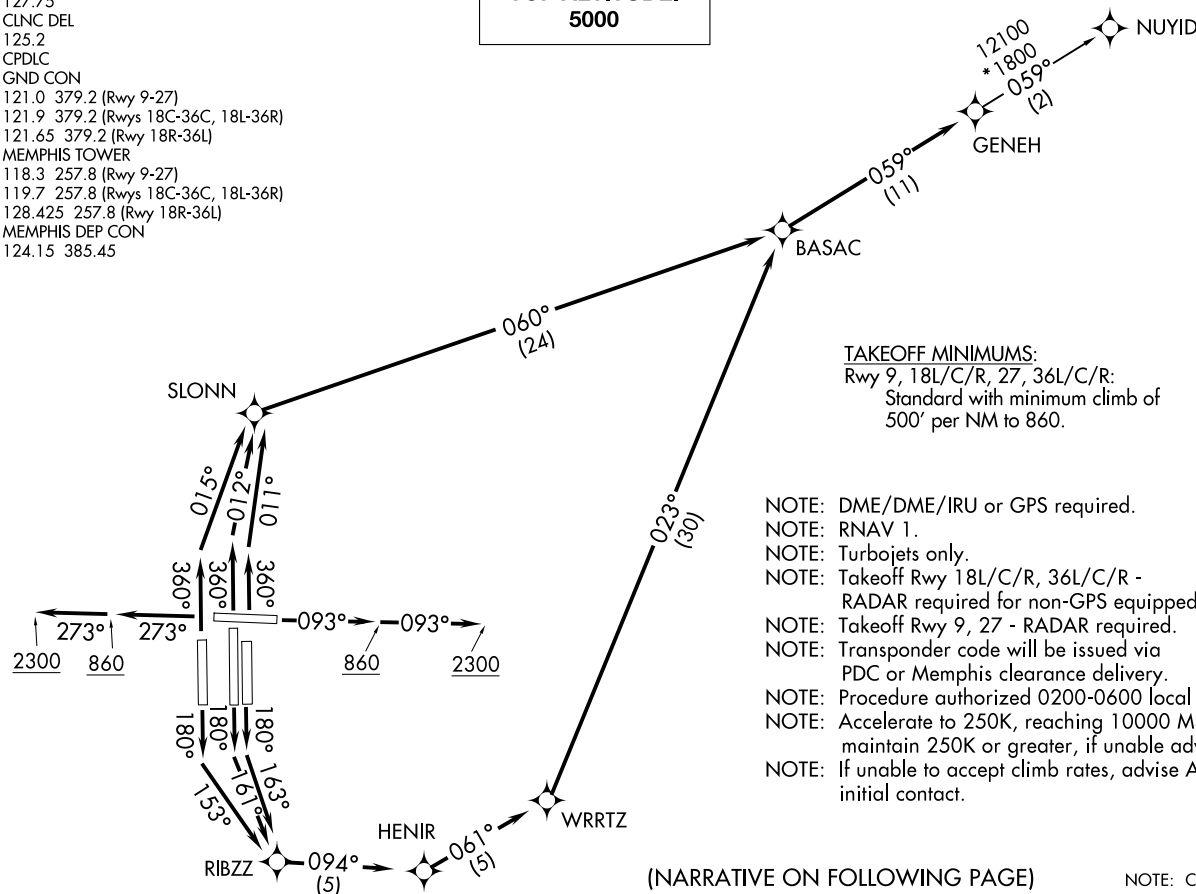


GENEH SEVEN DEPARTURE (RNAV)
(GENEH7.GENEH) 31DEC20

MEMPHIS, TENNESSEE
MEMPHIS INTL (MEM)

D-ATIS
127.75
CLNC DEL
125.2
CPDLC
GND CON
121.0 379.2 (Rwy 9-27)
121.9 379.2 (Rwys 18C-36C, 18L-36R)
121.65 379.2 (Rwy 18R-36L)
MEMPHIS TOWER
118.3 257.8 (Rwy 9-27)
119.7 257.8 (Rwys 18C-36C, 18L-36R)
128.425 257.8 (Rwy 18R-36L)
MEMPHIS DEP CON
124.15 385.45

**TOP ALTITUDE:
5000**



(NARRATIVE ON FOLLOWING PAGE)

NOTE: Chart not to scale.

(GENEH7.GENEH) 20366
GENEH SEVEN DEPARTURE (RNAV)

AL-253 (FAA)

MEMPHIS INTL (MEM)
MEMPHIS, TENNESSEE



DEPARTURE ROUTE DESCRIPTION

TAKEOFF RUNWAY 9: Climb on heading 093° to 860, then continue climb to 2300 on heading 093° or as assigned by ATC, for RADAR vectors to BASAC, then on depicted route to GENEH, thence. . . .

TAKEOFF RUNWAY 18C: Climb on heading 180° to intercept course 161° to RIBZZ, then on depicted route to GENEH, thence. . . .

TAKEOFF RUNWAY 18L: Climb on heading 180° to intercept course 163° to RIBZZ, then on depicted route to GENEH, thence. . . .

TAKEOFF RUNWAY 18R: Climb on heading 180° to intercept course 153° to RIBZZ, then on depicted route to GENEH, thence. . . .

TAKEOFF RUNWAY 27: Climb on heading 273° to 860, then continue climb to 2300 on heading 273° or as assigned by ATC, for RADAR vectors to BASAC then on depicted route to GENEH, thence. . . .

TAKEOFF RUNWAY 36C: Climb on heading 360° to intercept course 012° to SLONN, then on depicted route to GENEH, thence. . . .

TAKEOFF RUNWAY 36L: Climb on heading 360° to intercept course 015° to SLONN, then on depicted route to GENEH, thence. . . .

TAKEOFF RUNWAY 36R: Climb on heading 360° to intercept course 011° to SLONN, then on depicted route to GENEH, thence. . . .

. . . . maintain 5000. Expect clearance to filed altitude within ten (10) minutes after departure.

NUYID TRANSITION (GENEH7.NUYID)

SE-1, 25 DEC 2025 to 22 JAN 2026

SE-1, 25 DEC 2025 to 22 JAN 2026