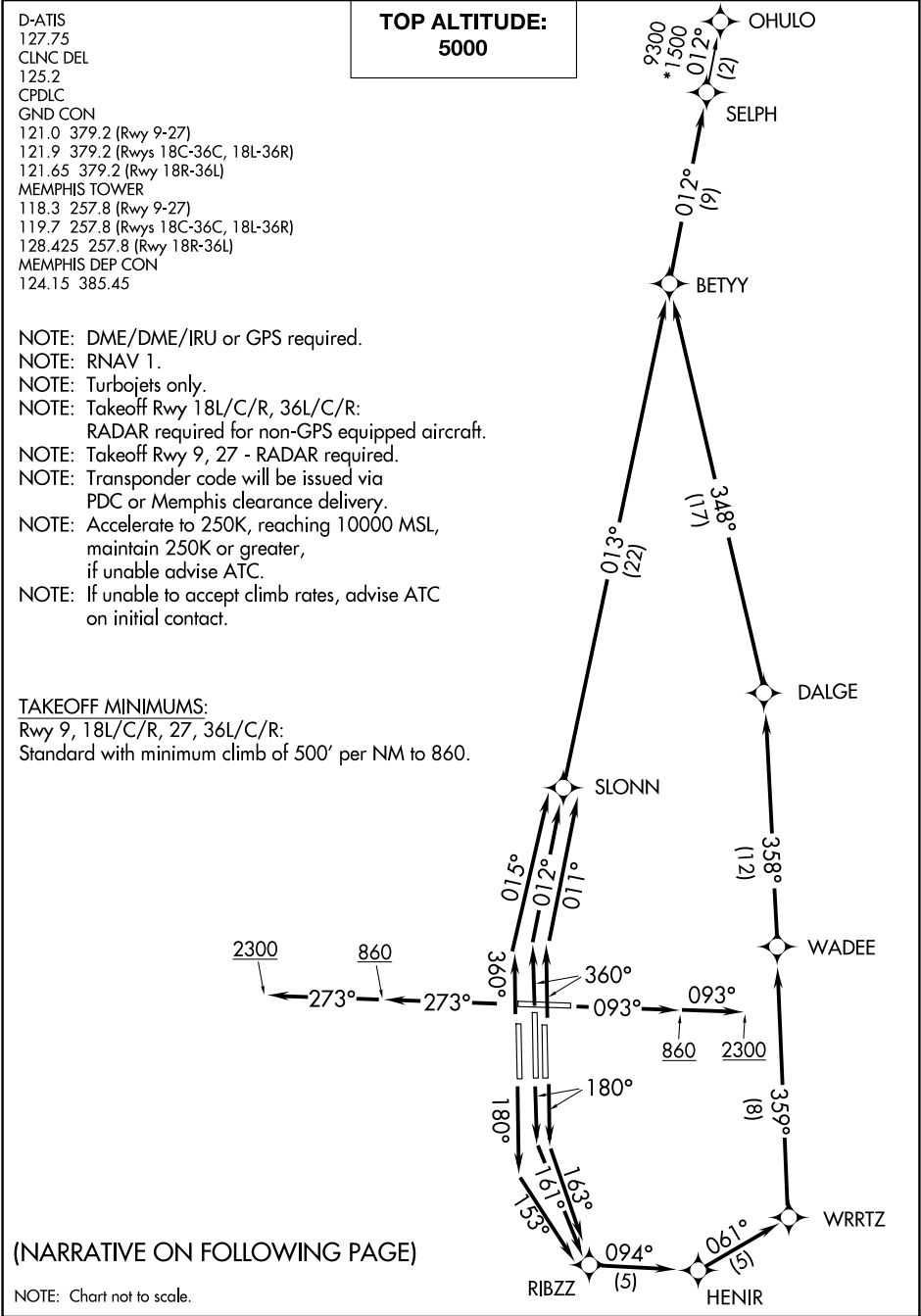


SELPH SEVEN DEPARTURE (RNAV)



SELPH SEVEN DEPARTURE (RNAV)

SE-1, 25 DEC 2025 to 22 JAN 2026

SE-1, 25 DEC 2025 to 22 JAN 2026



DEPARTURE ROUTE DESCRIPTION

TAKEOFF RUNWAY 9: Climb on heading 093° to 860, then continue climb to 2300 on heading 093° or as assigned by ATC, for RADAR vectors to BETYY, then on depicted route to SELPH, thence . . .

TAKEOFF RUNWAY 18C: Climb on heading 180° to intercept course 161° to RIBZZ, then on depicted route to SELPH, thence . . .

TAKEOFF RUNWAY 18L: Climb on heading 180° to intercept course 163° to RIBZZ, then on depicted route to SELPH, thence . . .

TAKEOFF RUNWAY 18R: Climb on heading 180° to intercept course 153° to RIBZZ, then on depicted route to SELPH, thence . . .

TAKEOFF RUNWAY 27: Climb on heading 273° to 860, then continue climb to 2300 on heading 273° or as assigned by ATC, for RADAR vectors to BETYY, then on depicted route to SELPH, thence . . .

TAKEOFF RUNWAY 36C: Climb on heading 360° to intercept course 012° to SLONN, then on depicted route to SELPH, thence . . .

TAKEOFF RUNWAY 36L: Climb on heading 360° to intercept course 015° to SLONN, then on depicted route to SELPH, thence . . .

TAKEOFF RUNWAY 36R: Climb on heading 360° to intercept course 011° to SLONN, then on depicted route to SELPH, thence . . .

. . . maintain 5000. Expect clearance to filed altitude within ten (10) minutes after departure.

OHULO TRANSITION (SELPH7.OHULO)

SE-1, 25 DEC 2025 to 22 JAN 2026

SE-1, 25 DEC 2025 to 22 JAN 2026