

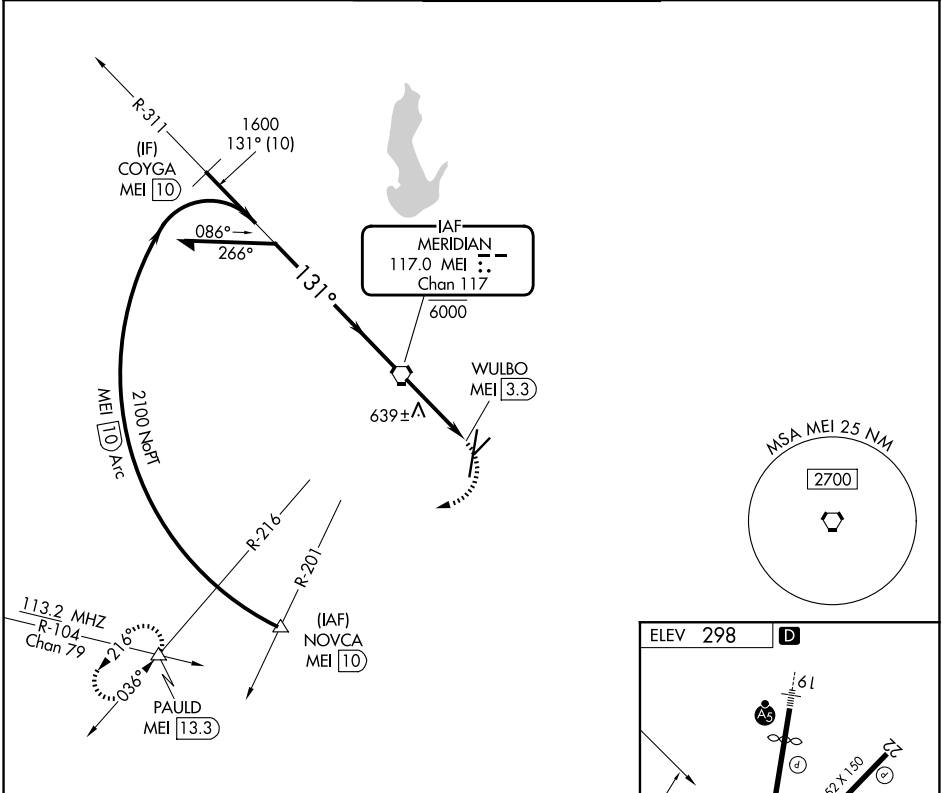
VORTAC MEI <b>117.0</b> Chan <b>117</b>	APP CRS <b>131°</b>	Rwy Ldg TDZE Apt Elev	<b>N/A</b> <b>N/A</b> <b>298</b>
---	------------------------	-----------------------------	--

**VOR-A**  
KEY FLD (MEI)

**⚠** Circling NA east of Rwy 1 and southeast of Rwy 22.  
**⚠** Procedure turn NA for Cat E.

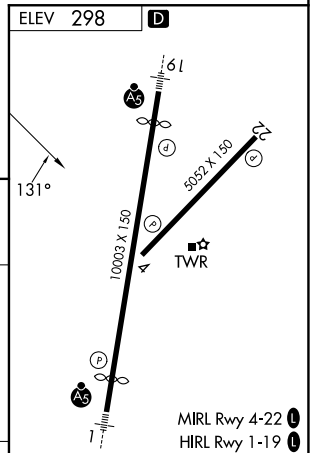
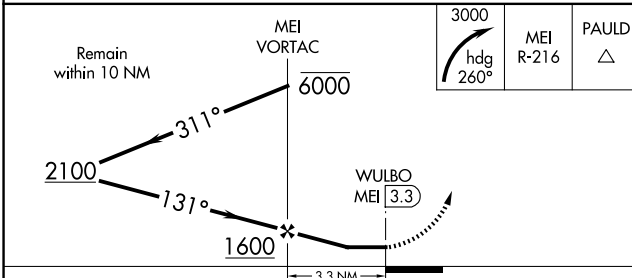
MISSED APPROACH: Climbing right turn to 3000 on heading 260° and MEI VORTAC R-216 to PAULD INT/MEI VORTAC 13.3 DME and hold.

ATIS <b>126.475 291.675</b>	MERIDIAN APP CON* <b>120.5 269.325</b>	KEY TOWER* <b>133.975 (CTAF) 257.8</b>	GND CON <b>121.9 348.6</b>	UNICOM <b>122.95</b>
--------------------------------	---	---	-------------------------------	-------------------------



SC-4, 25 DEC 2025 to 22 JAN 2026

SC-4, 25 DEC 2025 to 22 JAN 2026



CATEGORY	A	B	C	D	E	FAF to MAP 3.3 NM					
CIRCLING	900-1	602 (700-1)	960-1¾ 662 (700-1¾)	1120-2¾ 822 (900-2¾)	1120-3 822 (900-3)	Knots	60	90	120	150	180
						Min:Sec	3:18	2:12	1:39	1:19	1:06