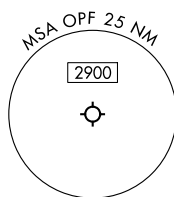


MIAMI-OPA LOCKA EXEC (OPF)
MIAMI, FLORIDA

MIAMI DEP CON
126.85 290.325
ATIS
125.9
CLNC DEL
119.2
GND CON
120.025
OPA LOCKA TOWER ★
134.675 (CTAF)

RADAR required for non-GPS equipped aircraft.

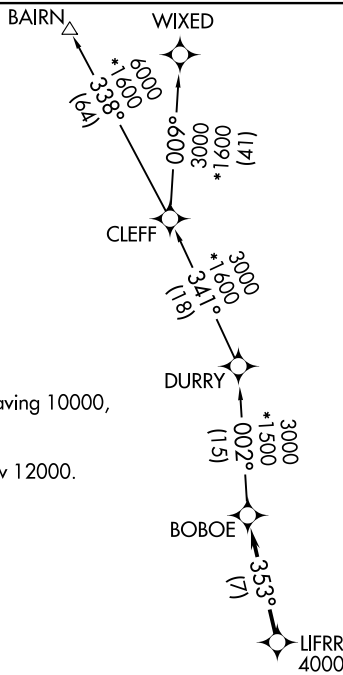
**TOP ALTITUDE:
ASSIGNED BY ATC**



NOTE: Accelerate to 250K until leaving 10000,
if unable, advise ATC.

NOTE: Jet aircraft only.

NOTE: For aircraft filed at or below 12000.

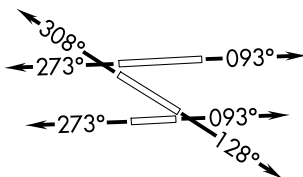


Rwy 9L: Standard with minimum climb of 500' / NM to 1000.

Rwy 9R: Standard with minimum climb of 500' / NM to 700.

Rwys 12, 27R: Standard with minimum climb
of 500'/NM to 600.

Rwys 27L, 30: Standard.



NOTE: Chart not to scale.

DEPARTURE ROUTE DESCRIPTION

TAKEOFF RUNWAYS 9L/R: Climb on heading 093° or as assigned by ATC, thence. . .

TAKEOFF RUNWAY 12: Climb on heading 128° or as assigned by ATC, thence. . .

TAKEOFF RUNWAYS 27L/R: Climb on heading 273° or as assigned by ATC, thence. . .

TAKEOFF RUNWAY 30: Climb on heading 308° or as assigned by ATC, thence. . .

. . . for RADAR vector to cross LIFRR at or above 4000, then on track 353° to BOBOE, then on assigned transition, maintain ATC assigned altitude, expect clearance to filed altitude within 10 minutes after departure.

BAIRN TRANSITION (LIFRR2.BAIRN)

WIXED TRANSITION (LIFRR2.WIXED)

MIAMI, FLORIDA
MIAMI-OPA LOCKA EXEC (OPF)

(LIFRR2.LIFRR) 21MAR24

SE-3, 25 DEC 2025 to 22 JAN 2026