

BNGOS FOUR DEPARTURE (RNAV)
(BNGOS4.BNGOS) 21 MAR 24

Departure Routes

MIAMI, FLORIDA
MIAMI INTL (MIA)

BNGOS See following page
for transition routes.

RNAV-1 DME/DME/IRU or GPS.

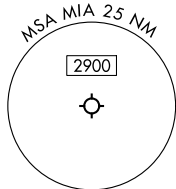
RADAR required.

TOP ALTITUDE:
5000

MIAMI DEP CON
126.85 290.325
D-ATIS
133.675
CLNC DEL
135.35
CPDLC
GND CON
(8L/R, 12, 26L/R)
121.8 348.6
(9, 27, 30)
127.5 348.6
MIAMI TOWER
118.3 256.9

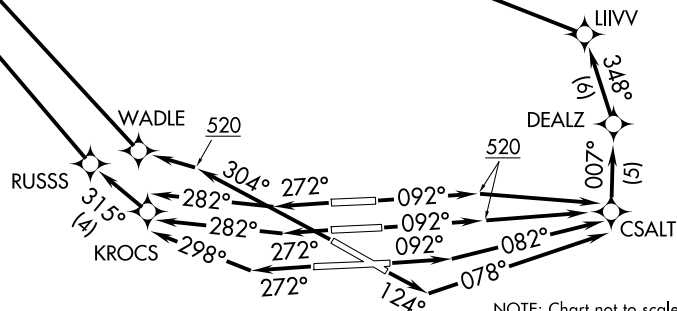
TAKEOFF MINIMUMS

Rwy 8L: Standard with minimum climb of 500'/NM to 520, then minimum climb of 215'/NM to 1400.
Rwy 8R: Standard with minimum climb of 500'/NM to 520, then minimum climb of 235'/NM to 1400.
Rwy 9: Standard with minimum climb of 500'/NM to 520, then minimum climb of 240'/NM to 1400.
Rwy 12: Standard with minimum climb of 500'/NM to 520, then minimum climb of 230'/NM to 1400.
Rwys 26L/R, 27, 30: Standard with minimum climb of 500' per NM to 520.



NOTE: Jet aircraft only.
NOTE: Accelerate to 250K until leaving 10000, if unable, advise ATC.
NOTE: MERKS Transition ATC assigned only except aircraft landing: MKY, RSW, APF, PGD and FMY.

(CONTINUED ON FOLLOWING PAGE)



NOTE: Chart not to scale.

(BNGOS4.BNGOS) 26331
BNGOS FOUR DEPARTURE (RNAV)

AL-257 (FAA)
Departure Routes

MIAMI INTL (MIA)
MIAMI, FLORIDA

