

FOI ZZ THREE DEPARTURE(RNAV) Departure Routes
(FOI ZZ3.FOI ZZ) 21 MAR 24

MIAMI DEP CON
126.85 290.325
D-ATIS
133.675
CLNC DEL
135.35
CPDLC
GND CON
121.8 348.6 (8L/R, 12, 26L/R)
127.5 348.6 (9, 27, 30)
MIAMI TOWER
118.3 256.9

RNAV-1 DME/DME/IRU or GPS.
SNAGY and SUMRS Transitions: RNAV 1-GPS.
RADAR required.

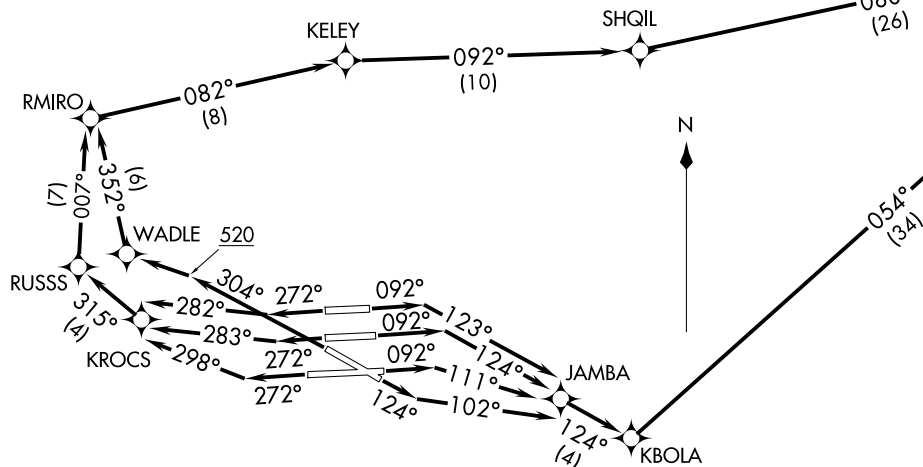
**TOP ALTITUDE:
5000**

TAKEOFF MINIMUMS

Rwy 8L: Standard with minimum climb of 500'/NM to 520, then minimum climb of 215' per NM to 1400.
Rwy 8R: Standard with minimum climb of 500'/NM to 520, then minimum climb of 235' per NM to 1400.
Rwy 9: Standard with minimum climb of 500'/NM to 520, then minimum climb of 240' per NM to 1400.
Rwy 12: Standard with minimum climb of 500'/NM to 520, then minimum climb of 230' per NM to 1400.
Rwys 26L/R, 27, 30: Standard with minimum climb of 500'/NM to 520.

See following
page for
transition routes.

FOI ZZ



NOTE: Jet aircraft only.
NOTE: Accelerate to 250K until leaving 10000, if unable, advise ATC.
NOTE: PADUS Transition for Freeport arrivals only.
NOTE: SNAGY and SUMRS Transitions for European traffic only.

(CONTINUED ON FOLLOWING PAGE)

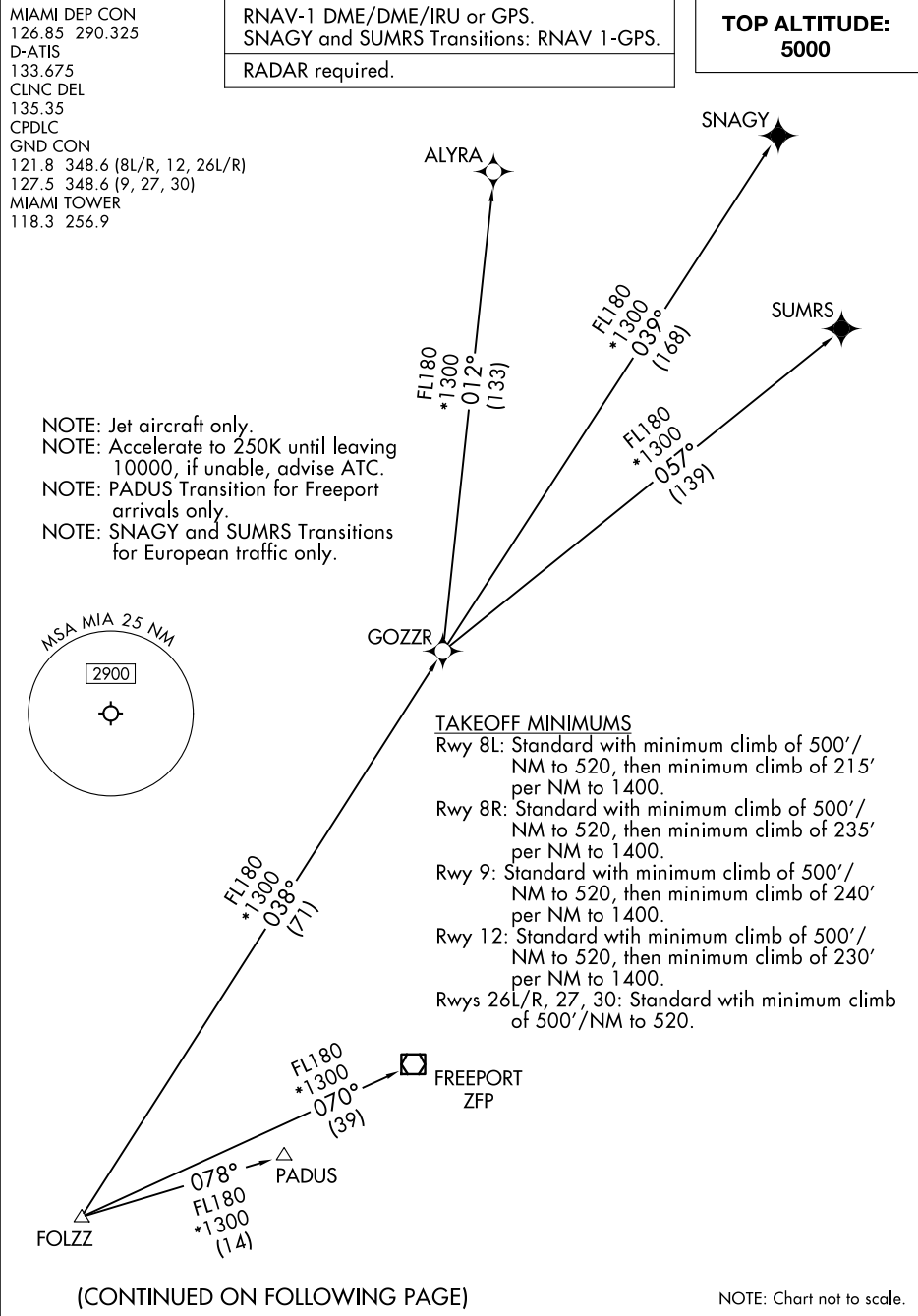
NOTE: Chart not to scale.

(FOI ZZ3.FOI ZZ) 25331
FOI ZZ THREE DEPARTURE(RNAV) Departure Routes

MIAMI INTL (MIA)
MIAMI, FLORIDA

AL-257 (FAA)

MIAMI, FLORIDA
MIAMI INTL (MIA)



SE-3, 25 DEC 2025 to 22 JAN 2026

SE-3, 25 DEC 2025 to 22 JAN 2026



DEPARTURE ROUTE DESCRIPTION
SEE ADDITIONAL REQUIREMENTS ON AAUP

TAKEOFF RUNWAY 8L: Climb on heading 092° to intercept course 123° to JAMBA, then on track 124° to KBOLA, then on track 054° to cross MARCK at or above 5000, thence. . .

TAKEOFF RUNWAY 8R: Climb on heading 092° to intercept course 124° to JAMBA, then on track 124° to KBOLA, then on track 054° to cross MARCK at or above 5000, thence. . .

TAKEOFF RUNWAY 9: Climb on heading 092° to intercept course 111° to JAMBA, then on track 124° to KBOLA, then on track 054° to cross MARCK at or above 5000, thence. . .

TAKEOFF RUNWAY 12: Climb on heading 124° to intercept course 102° to JAMBA, then on track 124° to KBOLA, then on track 054° to cross MARCK at or above 5000, thence. . .

TAKEOFF RUNWAY 26L: Climb on heading 272° to intercept course 283° to KROCS, then on track 315° to RUSSS, then on track 007° to RMIRO, then on track 082° to KELEY, then on track 092° to SHQIL, then on track 080° to cross MARCK at or above 5000, thence. . .

TAKEOFF RUNWAY 26R: Climb on heading 272° to intercept course 282° to KROCS, then on track 315° to RUSSS, then on track 007° to RMIRO, then on track 082° to KELEY, then on track 092° to SHQIL, then on track 080° to cross MARCK at or above 5000, thence. . .

TAKEOFF RUNWAY 27: Climb on heading 272° to intercept course 298° to KROCS, then on track 315° to RUSSS, then on track 007° to RMIRO, then on track 082° to KELEY, then on track 092° to SHQIL, then on track 080° to cross MARCK at or above 5000, thence. . .

TAKEOFF RUNWAY 30: Climb on heading 304° to 520, then direct WADLE, then on track 352° to RMIRO, then on track 082° to KELEY, then on track 092° to SHQIL, then on track 080° to cross MARCK at or above 5000, thence. . .

. . .on track 060° to FOLZZ, then on assigned transition, maintain 5000. Expect clearance to filed altitude within 10 minutes after departure.

- ALYRA TRANSITION (FOLZZ3.ALYRA)
- FREEPORT TRANSITION (FOLZZ3.ZFP)
- GOZZR TRANSITION (FOLZZ3.GOZZR)
- PADUS TRANSITION (FOLZZ3.PADUS)
- SNAGY TRANSITION (FOLZZ3.SNAGY)
- SUMRS TRANSITION (FOLZZ3.SUMRS)