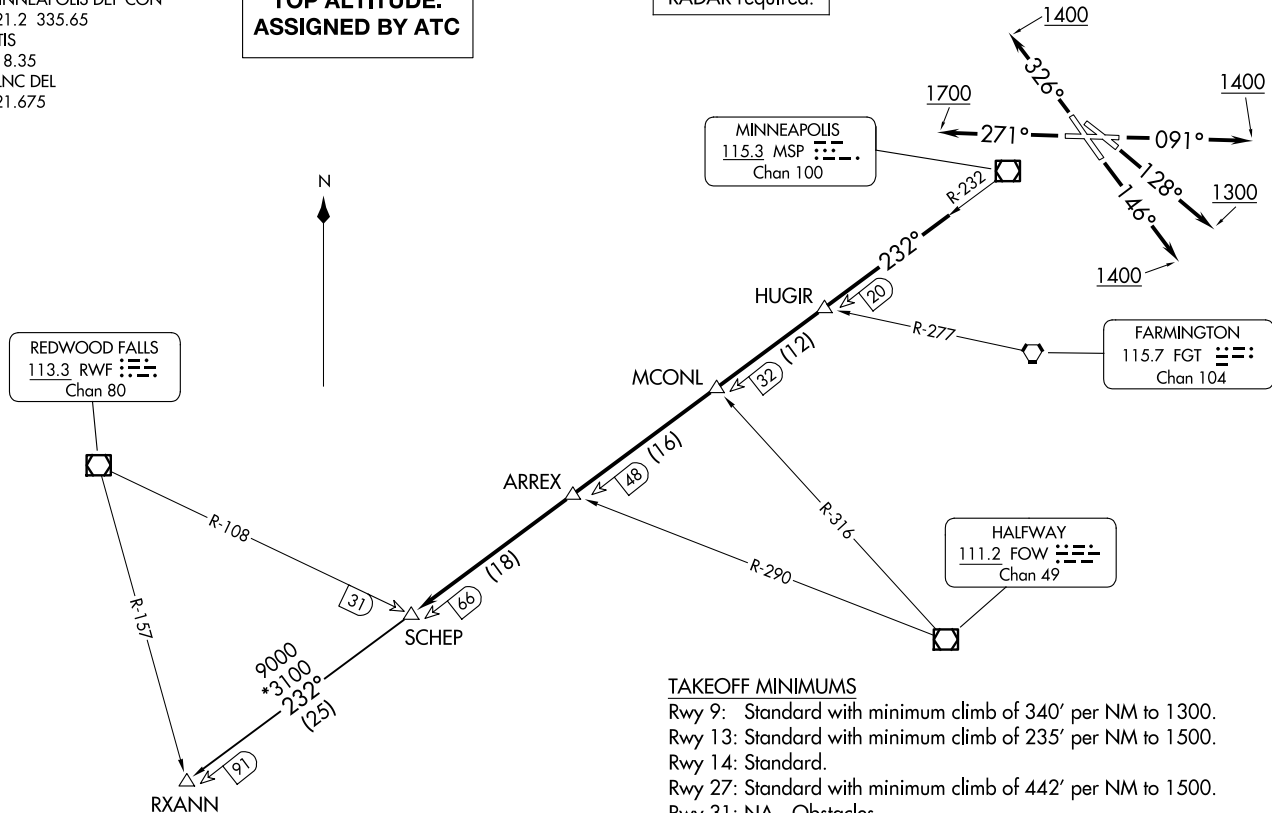


MINNEAPOLIS DEP CON
121.2 335.65
ATIS
118.35
CLNIC DEL
121.675

**TOP ALTITUDE:
ASSIGNED BY ATC**

RADAR required.



(CONTINUED ON FOLLOWING PAGE)

NOTE: Chart not to scale.



DEPARTURE ROUTE DESCRIPTION

TAKEOFF RUNWAY 9: Climb on heading 091° to 1400 for RADAR vectors to assigned fix on MSP R-232, then on depicted route to SCHEP, thence

TAKEOFF RUNWAY 13: Climb on heading 128° to 1300 for RADAR vectors to assigned fix on MSP R-232, then on depicted route to SCHEP, thence

TAKEOFF RUNWAY 14: Climb on heading 146° to 1400 for RADAR vectors to assigned fix on MSP R-232, then on depicted route to SCHEP, thence

TAKEOFF RUNWAY 27: Climb on heading 271° to 1700 for RADAR vectors to assigned fix on MSP R-232, then on depicted route to SCHEP, thence

TAKEOFF RUNWAY 32: Climb on heading 326° to 1400 for RADAR vectors to assigned fix on MSP R-232, then on depicted route to SCHEP, thence

. . . .on transition. Maintain ATC assigned altitude. Expect filed altitude 10 minutes after departure.

RXANN TRANSITION (SCHEP1.RXANN): From over SCHEP INT on MSP R-232 to RXANN INT.