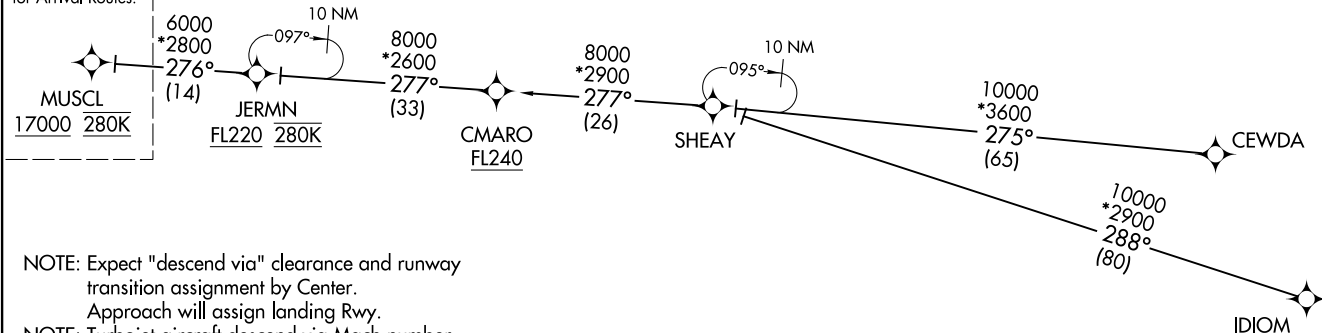


MINNEAPOLIS APP CON  
126.35 335.5  
D-ATIS ARR  
135.35 239.275

See following page  
for Arrival Routes.



NOTE: Expect "descend via" clearance and runway transition assignment by Center.  
Approach will assign landing Rwy.  
NOTE: Turbojet aircraft descend via Mach number until intercepting 280K. Maintain 280K until slowed by the STAR, or assigned by ATC.  
NOTE: DME/DME/IRU or GPS required.  
NOTE: For turbojet aircraft only.  
NOTE: RADAR required.  
NOTE: RNAV 1.

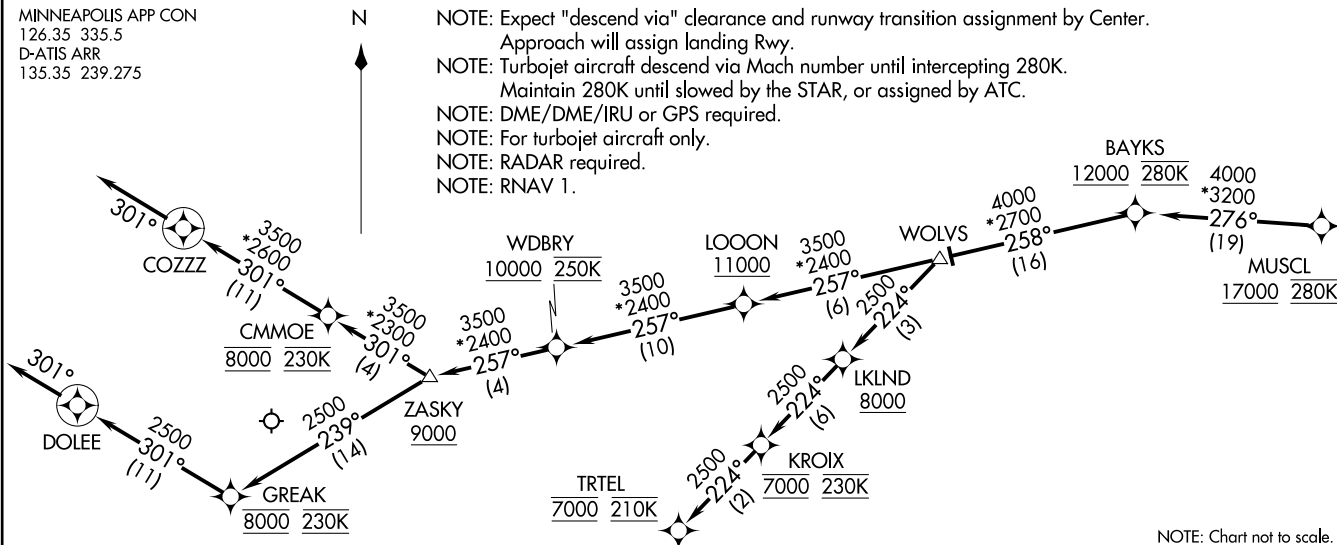
CEWDA TRANSITION (CEWDA.MUSCL3)  
CMARO TRANSITION (CMARO.MUSCL3)  
IDIOM TRANSITION (IDIOM.MUSCL3)  
JERMN TRANSITION (JERMN.MUSCL3)  
SHEAY TRANSITION (SHEAY.MUSCL3)

(CONTINUED ON FOLLOWING PAGE)

NOTE: Chart not to scale.

MUSCL THREE ARRIVAL (RNAV)	Arrival Routes	MINNEAPOLIS, MINNESOTA
(MUSCL.MUSCL3) 05JAN17	MINNEAPOLIS-ST PAUL INTL/WOLD-CHAMBERLAIN (MSP)	

MINNEAPOLIS APP CON  
126.35 335.5  
D-ATIS ARR  
135.35 239.275



## ARRIVAL ROUTE DESCRIPTION

From MUSCL on track 276° to cross BAYKS at or above 12000 and at 280K, then on track 258° to WOLVS.

LANDING RUNWAYS 4, 12L, 17, 22: From WOLVS on track 257° to cross LOOON at or above 11000, then on track 257° to cross WDBRY at or above 10000 and at 250K, then on track 257° to cross ZASKY at or above 9000, then on track 301° to cross CMMOE at 8000 and at 230K, then on track 301° to COZZZ, then on track 301°. Expect RADAR vectors to final approach course.

**LANDING RUNWAYS 12R, 35:** From WOLVS on track 257° to cross LOOON at or above 11000, then on track 257° to cross WDBRY at or above 10000 and at 250K, then on track 257° to cross ZASKY at or above 9000, then on track 239° to cross GREAK at 8000 and at 230K, then on track 301° to DOLEE, then on track 301°. Expect RADAR vectors to final approach course.

**LANDING RUNWAYS 30L/R:** From WOLVS on track 224° to cross LKLN at or above 8000, then on track 224° to cross KROIX at 7000 and at 230K, then on track 224° to cross TRTEL at 7000 and at 210K. Expect RNAV (RNP), RNAV (GPS), or ILS approach or RADAR vectors to final approach course.

(MUSCL,MUSCL3)	17173	MINNEAPOLIS-ST PAUL INTL/WOLD-CHAMBERLAIN (MSP)
MUSCL THREE ARRIVAL (RNAV)	Arrival Routes	AL-264 (FAA)
		MINNEAPOLIS, MINNESOTA