

CHADM FOUR DEPARTURE (RNAV)
(CHADM4.CHADM) 27NOV25

NASHVILLE, TENNESSEE
NASHVILLE INTL (BNA)

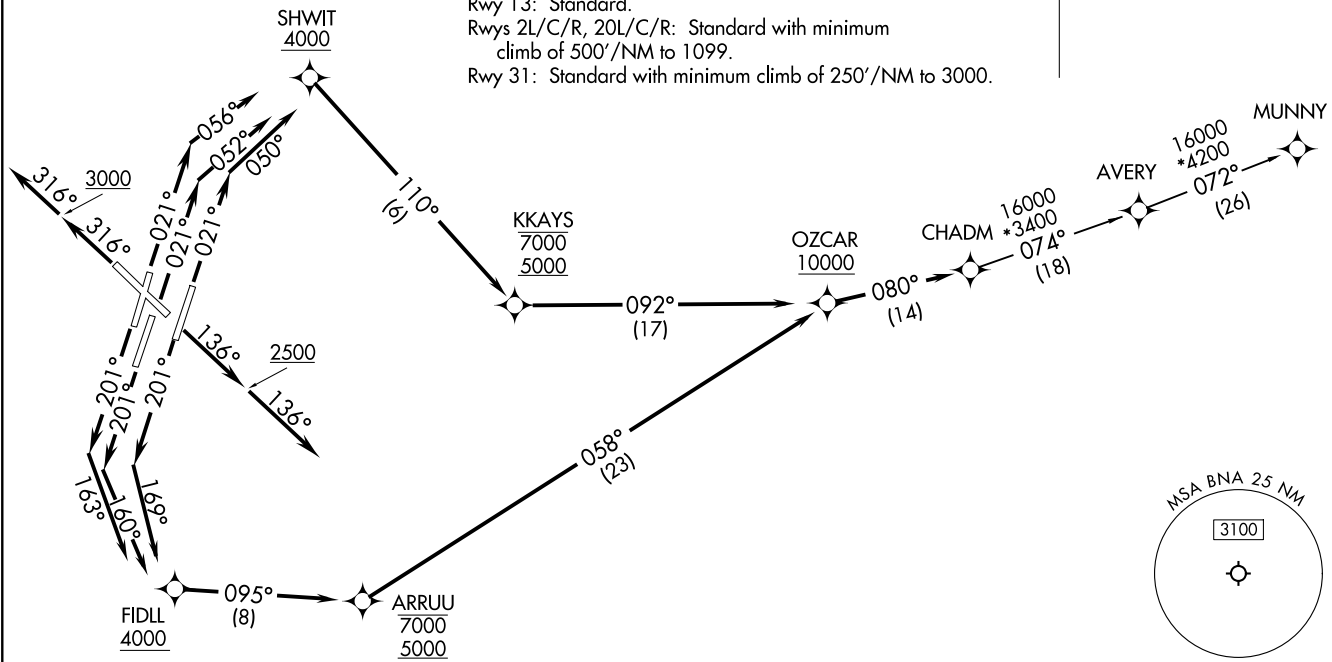
NASHVILLE DEP CON
118.4 360.7
D-ATIS 135.1
CLNC DEL 126.05
CPDLC
GND CON
121.9 348.6
NASHVILLE TOWER
118.6 257.8

RNAV 1 - DME/DME/IRU or GPS.
RADAR required.

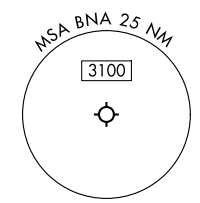
TOP ALTITUDE:
15000

NOTE: Jet aircraft only.

TAKEOFF MINIMUMS:
Rwy 13: Standard.
Rwys 2L/C/R, 20L/C/R: Standard with minimum
climb of 500'/NM to 1099.
Rwy 31: Standard with minimum climb of 250'/NM to 3000.



(CONTINUED ON FOLLOWING PAGE)



NOTE: Chart not to scale.

(CHADM4.CHADM) 25331

AL-282 (FAA)

NASHVILLE INTL (BNA)
NASHVILLE, TENNESSEE



DEPARTURE ROUTE DESCRIPTION

TAKEOFF RUNWAY 2L: Climb on heading 021° to intercept course 056° to cross SHWIT at or above 4000, then on track 110° to cross KKAYS between 5000 and 7000, then on track 092° to cross OZCAR at or above 10000, thence. . . .

TAKEOFF RUNWAY 2C: Climb on heading 021° to intercept course 052° to cross SHWIT at or above 4000, then on track 110° to cross KKAYS between 5000 and 7000, then on track 092° to cross OZCAR at or above 10000, thence. . . .

TAKEOFF RUNWAY 2R: Climb on heading 021° to intercept course 050° to cross SHWIT at or above 4000, then on track 110° to cross KKAYS between 5000 and 7000, then on track 092° to cross OZCAR at or above 10000, thence. . . .

TAKEOFF RUNWAY 13: Climb on heading 136° to 2500, then on heading 136° or as assigned by ATC for RADAR vectors to cross OZCAR at or above 10000, thence. . . .

TAKEOFF RUNWAY 20L: Climb on heading 201° to intercept course 169° to cross FIDLL at or above 4000, then on track 095° to cross ARRUU between 5000 and 7000, then on track 058° to cross OZCAR at or above 10000, thence. . . .

TAKEOFF RUNWAY 20C: Climb on heading 201° to intercept course 160° to cross FIDLL at or above 4000, then on track 095° to cross ARRUU between 5000 and 7000, then on track 058° to cross OZCAR at or above 10000, thence. . . .

TAKEOFF RUNWAY 20R: Climb on heading 201° to intercept course 163° to cross FIDLL at or above 4000, then on track 095° to cross ARRUU between 5000 and 7000, then on track 058° to cross OZCAR at or above 10000, thence. . . .

TAKEOFF RUNWAY 31: Climb on heading 316° to 3000, then on heading 316° or as assigned by ATC for RADAR vectors to cross OZCAR at or above 10000, thence. . . .

. . . .on track 080° to CHADM. Maintain 15000, expect filed altitude 10 minutes after departure.

MUNNY TRANSITION (CHADM4.MUNNY)