

RNAV 1 - DME/DME/IRU or GPS.
RADAR required.

(RYYMN, RYYMN3) 25275

AL-282 (FAA)

NASHVILLE INTL (BNA)
NASHVILLE, TENNESSEE

RYYMN THREE ARRIVAL (RNAV) Transition Routes

NASHVILLE APP CON
119.35 372.0
D-ATIS
135.1



NOTE: Jet aircraft only.
NOTE: Landing north use Rwy 2L Transition,
landing south use Rwy 20R Transition.
NOTE: Expect to receive landing direction and
descend via clearance from Memphis Center.
Expect Rwy assignment from Nashville
approach.
NOTE: RANTS, ULTRA Transitions, ATC assigned only.



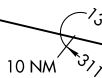
NMANN

15000
*2700
105°
(50)

SOKOL

15000
*2200
105°
(32)

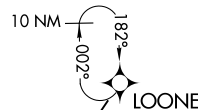
RANTS
FL240



11000
*2200
131°
(38)

TONES

12000
*2500
160°
(42)



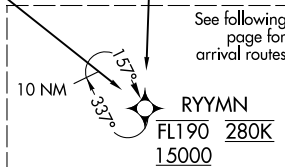
LOONE

12000
*2200
172°
(28)



ULTRA
FL230

11000
*2200
185°
(32)



RYYMN
FL190 280K
15000

See following
page for
arrival routes

NOTE: Chart not to scale.

LOONE TRANSITION (LOONE.RYYMN3)
NMANN TRANSITION (NMANN.RYYMN3)
RANTS TRANSITION (RANTS.RYYMN3)
SOKOL TRANSITION (SOKOL.RYYMN3)
TONES TRANSITION (TONES.RYYMN3)
ULTRA TRANSITION (ULTRA.RYYMN3)

(CONTINUED ON FOLLOWING PAGE)

RYYMN THREE ARRIVAL (RNAV) Transition Routes
(RYYMN, RYYMN3) 020C125

NASHVILLE, TENNESSEE
NASHVILLE INTL (BNA)

RYYMN THREE ARRIVAL (RNAV) Arrival Routes

| |
|------------------------------|
| RNAV 1 - DME/DME/IRU or GPS. |
| RADAR required. |

NOTE: Jet aircraft only.
NOTE: Landing north use Rwy 2L Transition,
Landing south use Rwy 20R Transition.
NOTE: Expect to receive landing direction and
descend via clearance from Memphis
Center. Expect Rwy assignment from
Nashville approach.
NOTE: RANTS, ULTRA Transitions, ATC
assigned only.

From RYYMN on track 157° to cross PEKIE at
or above 12000, then on track 157° to JONIL.

LANDING RUNWAYS 2L/C/R: From JONIL on track 157° to cross FFISK at or above 10000 and at 250K, then on track 157° to cross JNKNS at or above 9000 and at 230K, then on track 200° to cross WAMAR at 8000 and at 210K, then on track 200°. Expect RADAR vectors to final approach course.

LANDING RUNWAY 13: From JONIL on track 151° to cross WILEE at 9000 and at 210K, then on track 136° to cross DRUMZ at 9000 and at 210K, then on track 136°. Expect RADAR vectors to final approach course.

LANDING RUNWAYS 20L/C/R: From JONIL on track 112° to cross TURNT at 7000 and at 210K, then on track 111°. Expect RADAR vectors to final approach course.

LANDING RUNWAY 31: From JONIL on track 167° to cross KLOSE at or above 10000 and at 250K, then on track 165° to cross NASHN at or above 9000 and at 250K, then on track 147° to cross FYYRE at 9000 and at 210K, then on track 136°. Expect RADAR vectors to final approach course.

NOTE: Chart not to scale.

TURN T
7000 210K
Ldg Rwys 20L/C/R

WILEE
9000 210K

136°
(4)

DRUMZ
9000 210K

Ldg Rwy 13

FFISK
10000 250K

JNKNS
9000 230K

KLOSE \rightarrow
10000 250K

WAMAR
8000 210K
Ldg Rwys 2L/C/R

NASHN ←
9000 250K

FYYRE
9000 210K
Ldg Rwy 31