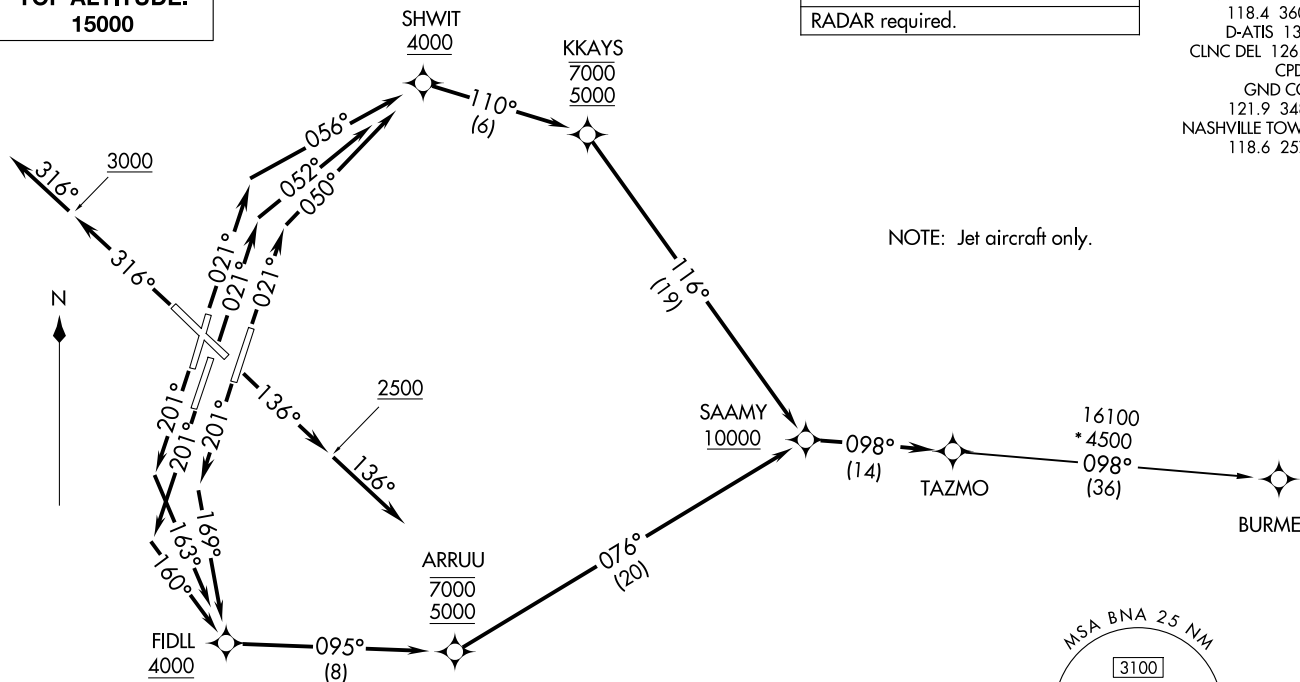


TAZMO FOUR DEPARTURE (RNAV)  
(TAZMO4.TAZMO) 27NOV25NASHVILLE, TENNESSEE  
NASHVILLE INTL (BNA)**TOP ALTITUDE:**  
**15000**RNAV 1 - DME/DME/IRU or GPS.  
RADAR required.NASHVILLE DEP CON  
118.4 360.7  
D-ATIS 135.1  
CLNC DEL 126.05  
CPDLC  
GND CON  
121.9 348.6  
NASHVILLE TOWER  
118.6 257.8**TAKEOFF MINIMUMS:**

Rwy 13: Standard.

Rwy 2L/C/R, 20L/C/R: Standard with minimum climb of 500' per NM to 1099.

Rwy 31: Standard with minimum climb of 250' per NM to 3000

(CONTINUED ON FOLLOWING PAGE)

NOTE: Chart not to scale.

(TAZMO4.TAZMO) 25331

AL-282 (FAA)

NASHVILLE INTL (BNA)  
NASHVILLE, TENNESSEE



DEPARTURE ROUTE DESCRIPTION

TAKEOFF RWY 2L: Climb on heading 021° to intercept course 056° to cross SHWIT at or above 4000, then on track 110° to cross KKAYS between 5000 and 7000, then on track 116° to cross SAAMY at or above 10000, thence....

TAKEOFF RWY 2C: Climb on heading 021° to intercept course 052° to cross SHWIT at or above 4000, then on track 110° to cross KKAYS between 5000 and 7000, then on track 116° to cross SAAMY at or above 10000, thence....

TAKEOFF RWY 2R: Climb on heading 021° to intercept course 050° to cross SHWIT at or above 4000, then on track 110° to cross KKAYS between 5000 and 7000, then on track 116° to cross SAAMY at or above 10000, thence....

TAKEOFF RWY 13: Climb on heading 136° to 2500, then on heading 136° or as assigned by ATC for RADAR vectors to cross SAAMY at or above 10000, thence....

TAKEOFF RWY 20L: Climb on heading 201° to intercept course 169° to cross FIDLL at or above 4000, then on track 095° to cross ARRUU between 5000 and 7000, then on track 076° to cross SAAMY at or above 10000, thence....

TAKEOFF RWY 20C: Climb on heading 201° to intercept course 160° to cross FIDLL at or above 4000, then on track 095° to cross ARRUU between 5000 and 7000, then on track 076° to cross SAAMY at or above 10000, thence....

TAKEOFF RWY 20R: Climb on heading 201° to intercept course 163° to cross FIDLL at or above 4000, then on track 095° to cross ARRUU between 5000 and 7000, then on track 076° to cross SAAMY at or above 10000, thence....

TAKEOFF RWY 31: Climb on heading 316° to 3000, then on heading 316° or as assigned by ATC for RADAR vectors to cross SAAMY at or above 10000, thence....

....on track 098° to TAZMO. Maintain 15000. Expect filed altitude ten (10) minutes after departure.

BURME TRANSITION (TAZMO4.BURME)