

LOC/DME I-INB <b>108.7</b> Chan 24	APP CRS <b>296°</b>	Rwy Ldg TDZE Apt Elev <b>10000</b> <b>9</b> <b>9</b>
------------------------------------------	------------------------	---------------------------------------------------------------------

# ILS or LOC RWY 30

OAKLAND SAN FRANCISCO BAY (OAK)

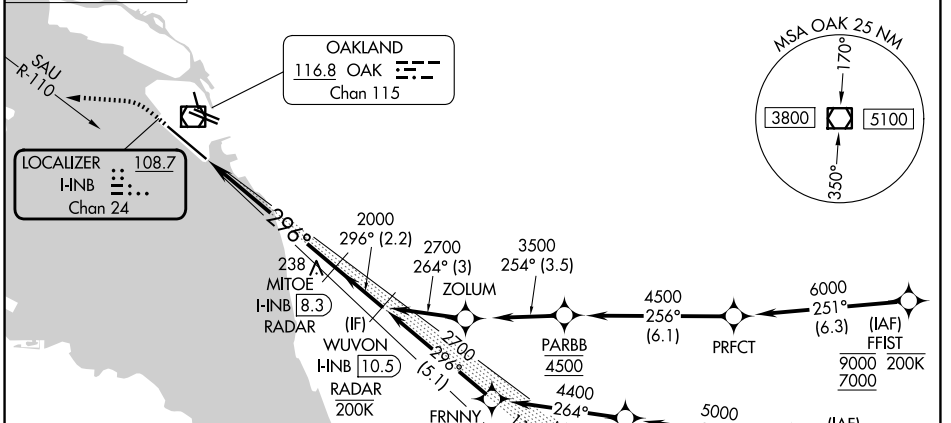
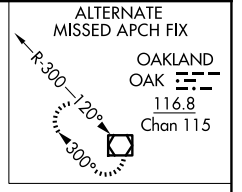
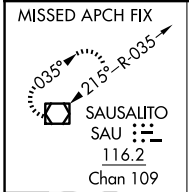
RNP APCH - GPS. From FFISt or MYSHN.  
DME or RADAR required.  
For inop ALS, increase S-LOC-30 Cat C and D visibility to 1 1/2 SM.

ALSF-2  
MISSED APPROACH: Climb to 600 then climbing left turn to 4000 on heading 260° and on SAU VOR/DME R-110 to SAU VOR/DME and hold, continue climb-in-hold to 4000.

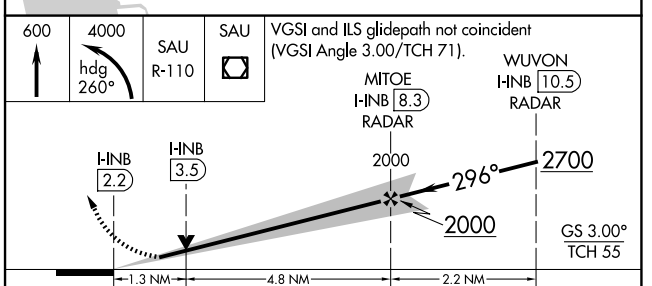
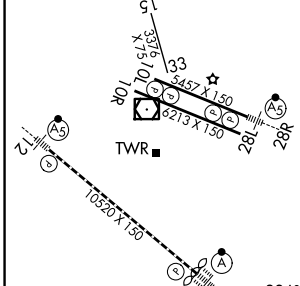
D-ATIS <b>133.775</b>	NORCAL APP CON <b>125.35 263.15</b>
--------------------------	----------------------------------------

OAKLAND TOWER	
<b>118.3 291.65</b> (10L/R-28L/R, 15-33)	<b>127.2 256.9</b> (12-30)

GND CON <b>121.9</b> (10L/R-28L/R, 15-33)	<b>121.75</b> (12-30)
----------------------------------------------	-----------------------



ELEV 9	<b>D</b>	TDZE 9
--------	----------	--------



REIL Rwy 10R TDZ/CL Rwy 30 MIRL Rwy 15-33 HIRL Rwy 12-30, 10L-28R, 10R-28L	FAF to MAP 6.1 NM
Knots	60 90 120 150 180
Min:Sec	6:06 4:04 3:03 2:26 2:02

CATEGORY	A	B	C	D
S-ILS 30	209/18 200 (200-1/2)			
S-LOC 30	500/24	491 (500-1/2)	500/50	491 (500-1)
CIRCLING	560-1	551 (600-1)	660-1 3/4 651 (700-1 3/4)	1400-3 1391 (1400-3)

SW-2, 25 DEC 2025 to 22 JAN 2026

SW-2, 25 DEC 2025 to 22 JAN 2026