

RACER EIGHT DEPARTURE

AL-302 (FAA)

NEW CENTURY AIRCENTER (IXD)
OLATHE, KANSAS

KANSAS CITY DEP CON
118.9 251.075

RADAR required.

TOP ALTITUDE:
10000

KANSAS CITY
113.25 MCI Chan 79(Y)

TOPEKA
117.8 TOP Chan 125

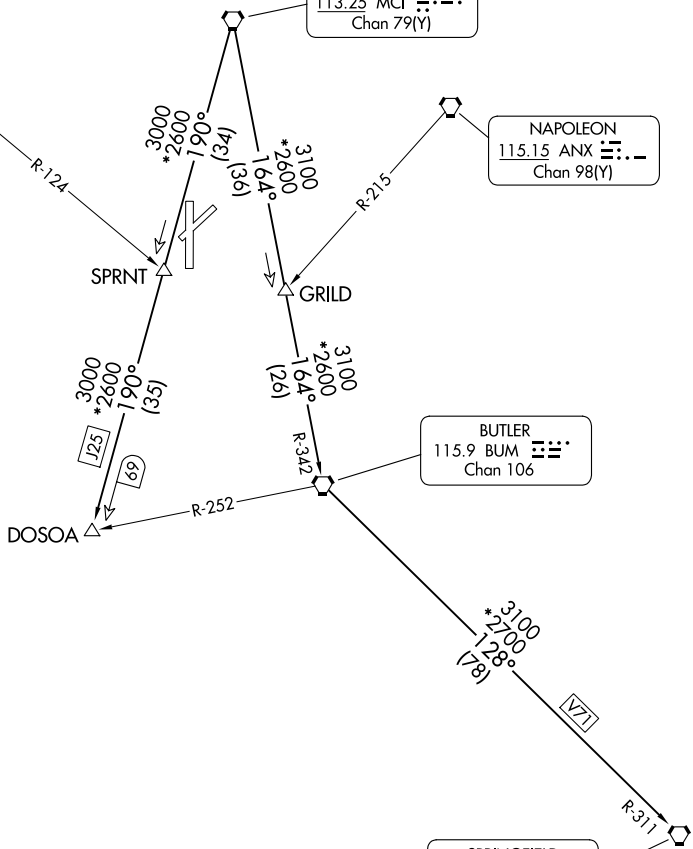
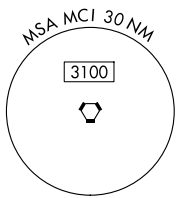
NAPOLEON
115.15 ANX Chan 98(Y)

BUTLER
115.9 BUM Chan 106

SPRINGFIELD
116.9 SGF Chan 116

NC-2, 25 DEC 2025 to 22 JAN 2026

NC-2, 25 DEC 2025 to 22 JAN 2026



TAKEOFF MINIMUMS

Rwys 4, 18, 22, 36: Standard.

NOTE: Chart not to scale.

DEPARTURE ROUTE DESCRIPTION

TAKEOFF ALL RUNWAYS: Climb on assigned heading for RADAR vectors to appropriate route. Maintain 10000 or as assigned by ATC, expect filed altitude 10 minutes after departure.

BUTLER TRANSITION (RACER8.BUM): From over MCI VORTAC on MCI R-164 and BUM R-342 to BUM VORTAC.

DOSOIA TRANSITION (RACER8.DOSOIA): From over MCI VORTAC on MCI R-190 to DOSOIA.

SPRINGFIELD TRANSITION (RACER8.SGF): From over MCI VORTAC on MCI R-164 and BUM R-342 to BUM VORTAC, then on BUM R-128 and SGF R-311 to SGF VORTAC.

RACER EIGHT DEPARTURE

(RACER8.MCI) 05OCT23

OLATHE, KANSAS
NEW CENTURY AIRCENTER (IXD)