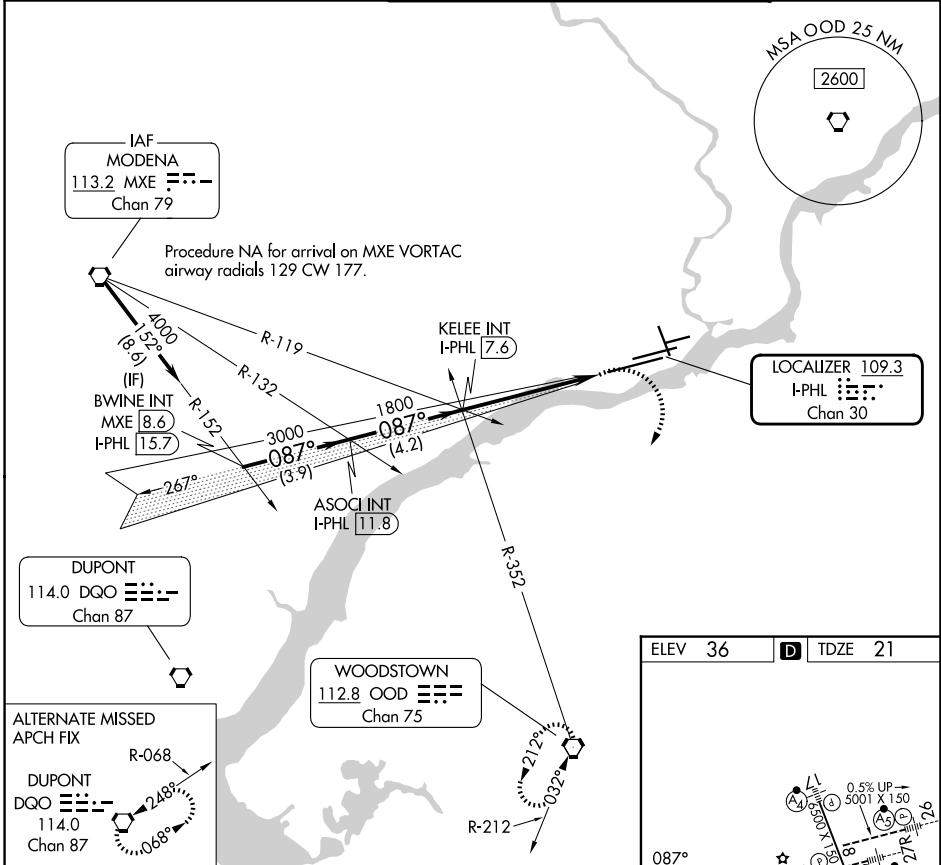


LOC/DME I-PHL 109.3 Chan 30	APP CRS 087°	Rwy Ldg 12000 TDZE 21 Apt Elev 36
---	------------------------	--

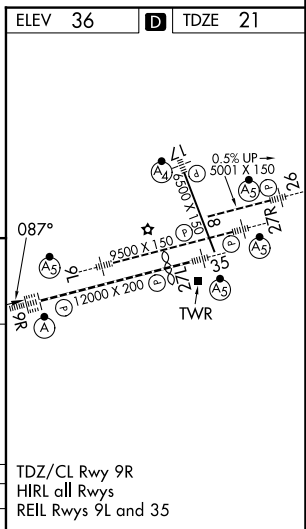
ILS V RWY 9R (CONVERGING)

PHILADELPHIA INTL (PHL)

RADAR required.		ALSIF-2	MISSED APPROACH: Climb to 900 then climbing right turn to 3000 direct OOD VORTAC and hold.
<p>Simultaneous approach authorized. For inop ALS, increase S-ILS 9R all Cats visibility to 1% SM.</p>			
D-ATIS 133.4	PHILADELPHIA APP CON 124.35 319.15	PHILADELPHIA TOWER 118.5 327.05 (08/26, 09L/27R, 17/35) 135.1 327.05 (09R/27L)	GND CON 121.9 348.6



BWINE INT MXE (8.6) I-PHL (15.7)	ASOCI INT I-PHL (11.8)	KELEE INT I-PHL (7.6)	900	3000	OOD
VGSI and ILS glidepath not coincident (VGSI Angle 3.00/TCH 72).					
<p>4000 → 087° → 3000 → 1800</p> <p>GS 3.00° TCH 58</p> <p>3.9 NM 4.2 NM 5.4 NM</p>					
CATEGORY	A	B	C	D	
S-ILS 9R	688-1½		667 (700-1½)		



NE-4, 25 DEC 2025 to 22 JAN 2026

NE-4, 25 DEC 2025 to 22 JAN 2026