

ALLEGHENY NINE DEPARTURE

**TOP ALTITUDE:
3000**

ATIS
120.55
GND CON
121.7
ALLEGHENY TOWER
121.1 239.0
PITTSBURGH DEP CON
119.35 285.575

BRIGGS
114.05 BSV :--:--:
Chan 87 (Y)

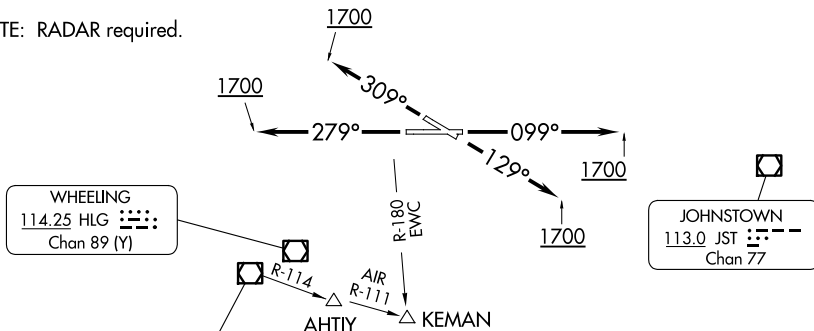
AKRON
114.4 ACO :--:--:
Chan 91

FRANKLIN
109.6 FKL :--:--:
Chan 91

ELLWOOD CITY
115.8 EWC :--:--:
Chan 105

TYROO

NOTE: RADAR required.



WHEELING
114.25 HLG :--:--:
Chan 89 (Y)

JOHNSTOWN
113.0 JST :--:--:
Chan 77

BELLAIRE
117.1 AIR :--:--:
Chan 118

TAKEOFF MINIMUMS
Rwys 10, 28, 31: Standard.
Rwy 13: Standard with minimum
climb of 205' per NM to 1800.

PARKERSBURG
114.45 JPU :--:--:
Chan 91(Y)

MORGANTOWN
111.6 MGW :--:--:
Chan 53

ELKINS
114.2 EKN :--:--:
Chan 89

DEPARTURE ROUTE DESCRIPTION

TAKEOFF RUNWAY 10: Climb heading 099° until 1700 thence....
TAKEOFF RUNWAY 13: Climb heading 129° until 1700 thence....
TAKEOFF RUNWAY 28: Climb heading 309° until 1700 thence....
TAKEOFF RUNWAY 31: Climb heading 099° until 1700 thence....

....expect vectors to assigned route/fix. Maintain 3000. Expect further clearance to requested altitude 10 minutes after departure.

NOTE: Chart not to scale.

ALLEGHENY NINE DEPARTURE

NE-4, 25 DEC 2025 to 22 JAN 2026

NE-4, 25 DEC 2025 to 22 JAN 2026