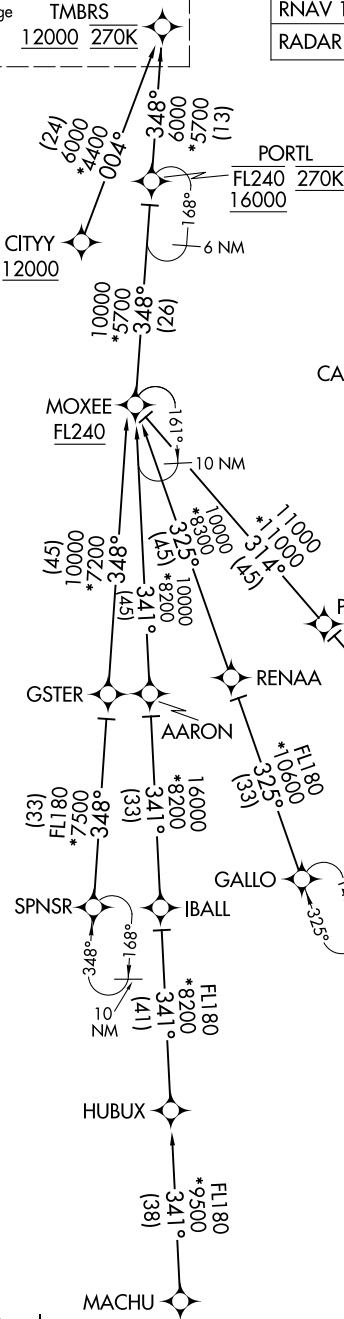


See following page  
for arrival routes.

TMBRS  
12000 270K

RNAV 1 - DME/DME/IRU or GPS.  
RADAR required.

PORTLAND APP CON  
124.35 299.2  
D-ATIS  
128.35 269.9  
GND CON  
121.9 348.6  
PORTLAND TOWER  
118.7 257.8 (Rwy 10L-28R)  
123.775 251.125 (Rwys 3-21, 10R-28L)



NOTE: Jet aircraft descend via Mach number until 280K, if unable, advise ATC.  
NOTE: CITYYY Transition, ATC assigned only.  
NOTE: GPS required for CITYYY Transition.

CAUTION: Intermittent parajumping activity within 8 NM SSE of FLOWR in the vicinity of Skydive Oregon (LØ5) and Mulino (4S9) Apts, at and below 17500.

(CONTINUED ON FOLLOWING PAGE)

- CITYYY TRANSITION (CITYYY.TMBRS3)
- GALLO TRANSITION (GALLO.TMBRS3)
- MACHU TRANSITION (MACHU.TMBRS3)
- MOXEE TRANSITION (MOXEE.TMBRS3)
- PORTL TRANSITION (PORTL.TMBRS3)
- SOERN TRANSITION (SOERN.TMBRS3)
- SPNSR TRANSITION (SPNSR.TMBRS3)

NOTE: Chart not to scale.

(TMBRS.TMBRS3) 24305

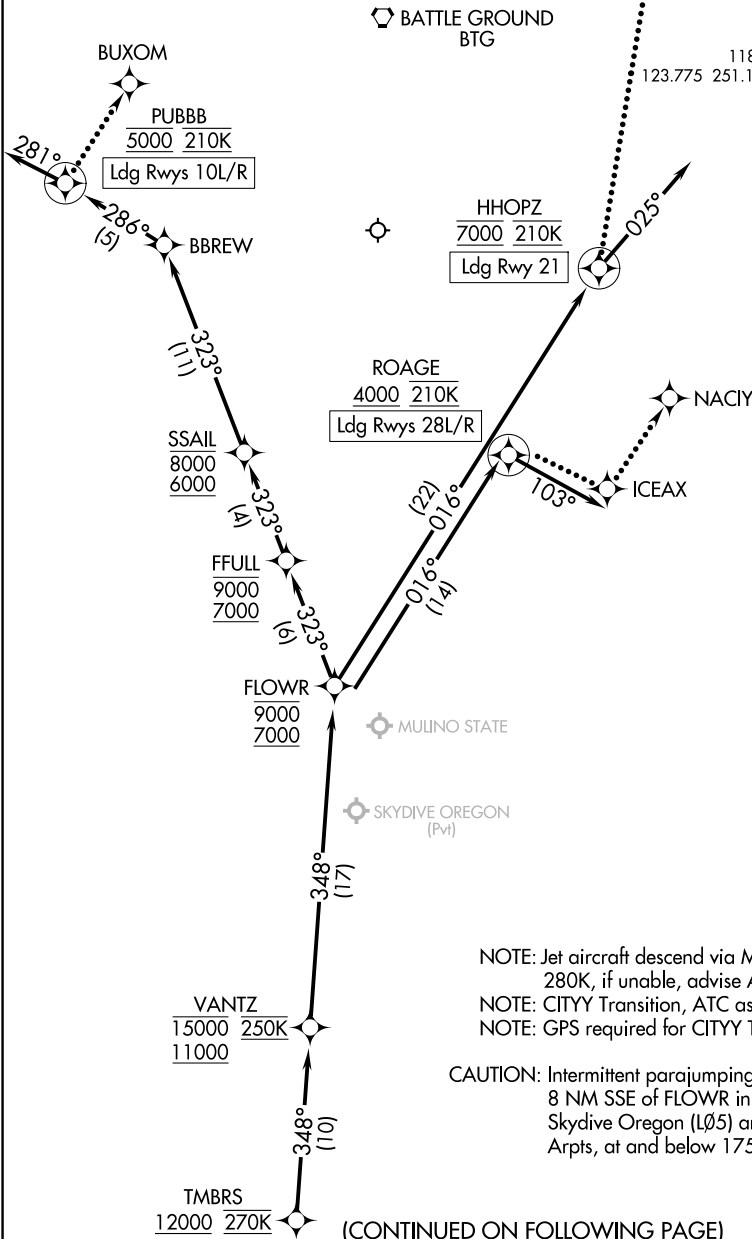
TMBRS THREE ARRIVAL(RNAV) Arrival Routes

AL-330 (FAA)

PORTLAND INTL (PDX)  
PORTLAND, OREGON

RNAV 1 - DME/DME/IRU or GPS.  
RADAR required.

PORTLAND APP CON  
124.35 299.2  
D-ATIS  
128.35 269.9  
GND CON  
121.9 348.6  
PORTLAND TOWER  
118.7 257.8 (Rwy 10L-28R)  
123.775 251.125 (Rwys 3-21, 10R-28L)



NOTE: Jet aircraft descend via Mach number until 280K, if unable, advise ATC.  
NOTE: CITYY Transition, ATC assigned only.  
NOTE: GPS required for CITYY Transition.

CAUTION: Intermittent parajumping activity within 8 NM SSE of FLOWR in the vicinity of Skydive Oregon (LØ5) and Mulino (4S9) Arpts, at and below 17500.

(CONTINUED ON FOLLOWING PAGE)

NOTE: Chart not to scale.

TMBRS THREE ARRIVAL(RNAV) Arrival Routes  
(TMBRS.TMBRS3) 31OCT24

PORTLAND, OREGON  
PORTLAND INTL (PDX)

NW-1, 25 DEC 2025 to 22 JAN 2026

NW-1, 25 DEC 2025 to 22 JAN 2026

ARRIVAL ROUTE DESCRIPTION

From TMBRS on track 348° to cross VANTZ between 11000 and 15000 and at 250K, then on track 348° to cross FLOWR between 7000 and 9000.

LANDING RUNWAYS 10L/R: From FLOWR on track 323° to cross FFULL between 7000 and 9000, then on track 323° to cross SSAIL between 6000 and 8000, then on track 323° to BBREW, then on track 286° to cross PUBBB at 5000 and at 210K, then on track 281°. Expect RADAR vectors to final approach course.

LANDING RUNWAY 21: From FLOWR on track 016° to cross HHOPZ at 7000 and at 210K, then on track 025°. Expect RADAR vectors to final approach course.

LANDING RUNWAYS 28L/R: From FLOWR on track 016° to cross ROAGE at or above 4000 and at 210K, then on track 103°. Expect RADAR vectors to final approach course.

LOST COMMUNICATIONS

Maintain Rwy transition terminus altitude until established on approach procedure.

RUNWAYS 10L/R: After PUBBB turn right to BUXOM and proceed on the ILS or LOC RWY 10L approach.

RUNWAY 21: After HHOPZ, turn left to CREAK and proceed on the LOC/DME RWY 21 approach.

RUNWAYS 28L/R: After ROAGE, proceed to ICEAX , then to NACIY and proceed on the ILS or LOC RWY 28R approach.