

QUANTICO, VIRGINIA

# RNAV (GPS) RWY 2

WAAS CH 81721 W02A	APCH CRS 026°	Rwy ldg TDZE Arprt Elev 10	4250 9 10
--------------------------	------------------	-------------------------------	-----------------

(USN)

QUANTICO MCAF (TURNER FLD) (KNYG)

RNP APCH

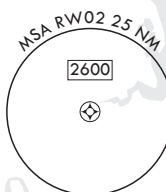
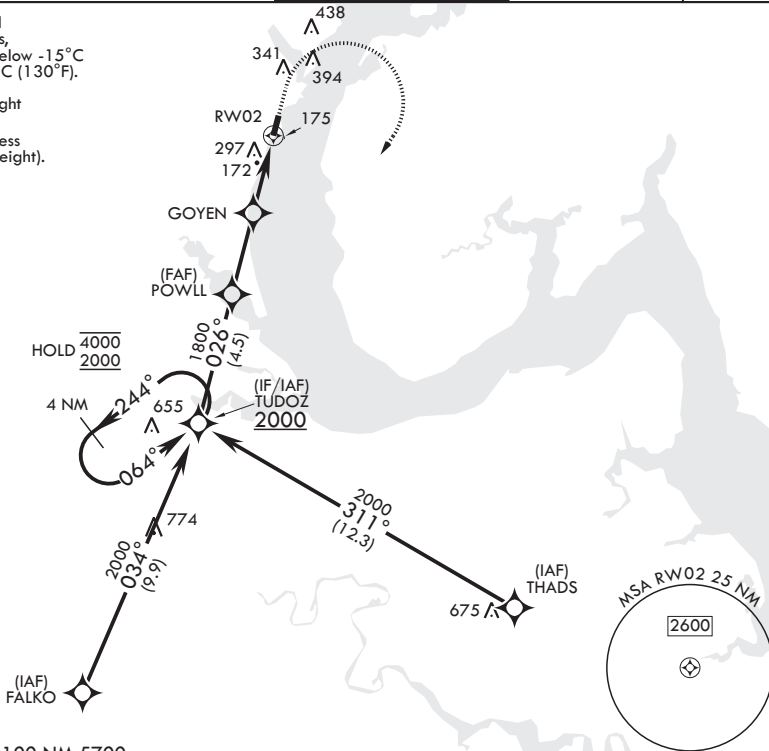
MISSED APPROACH: Climb to 600 then climbing right turn to 2000 direct TUDOZ and hold.

▼ \* Circling not authorized W of Rwy 2-20.

ATIS* 263.15	POTOMAC APP CON/DEP CON 128.525 306.925	TOWER* 118.6 (CTAF) 0 360.2	GND CON 121.75 348.7	ASR
-----------------	--	--------------------------------	-------------------------	-----

For uncompensated Baro-VNAV systems, LNAV/VNAV NA below -15°C (5°F) or above 54°C (130°F).

Wheel crossing height  
Group 3: 15 ft;  
Group 4: 10 ft (is less than the minimum height).



EMERG SAFE ALT 100 NM 5700

4 NM Holding Pattern TUDOZ	600	2000	TUDOZ	ELEV 10	TDZE 9
4000 ← 244°	↑ crs 026°	↻	⊙		
2000 → 064°					
GP 3.00° TCH 35					
	POWLL	GOYEN	RWY 2		
	1800	900	1.6 NM to RWY 2		
			2.8 NM	2.7 NM	

CATEGORY	A	B	C	D	E
LPV DA	259-¾		250	(300-¾)	
LNAV/VNAV DA	459-1⅞		450	(500-1⅞)	
LNAV MDA	560-1	551 (600-1)	560-1⅞	551 (600-1⅞)	
CIRCLING*	560-1 550 (600-1)	660-1 650 (700-1)	700-2 690 (700-2)	740-2¼ 730 (800-2¼)	760-2¾ 750 (800-2¾)

TWR	BCN
27	2
026°	026°
4250 x 184	

HIRL all rwys  
REIL all rwys

NE-3, 25 DEC 2025 to 22 JAN 2026

NE-3, 25 DEC 2025 to 22 JAN 2026

QUANTICO, VIRGINIA

38°30'N - 77°18'W

QUANTICO MCAF (TURNER FLD) (KNYG)

Orig 27NOV25

# RNAV (GPS) RWY 2