

APP CRS	Rwy Ldg	7031
226°	TDZE	3067
	Apt Elev	3082

RNAV (RNP) Z RWY 23

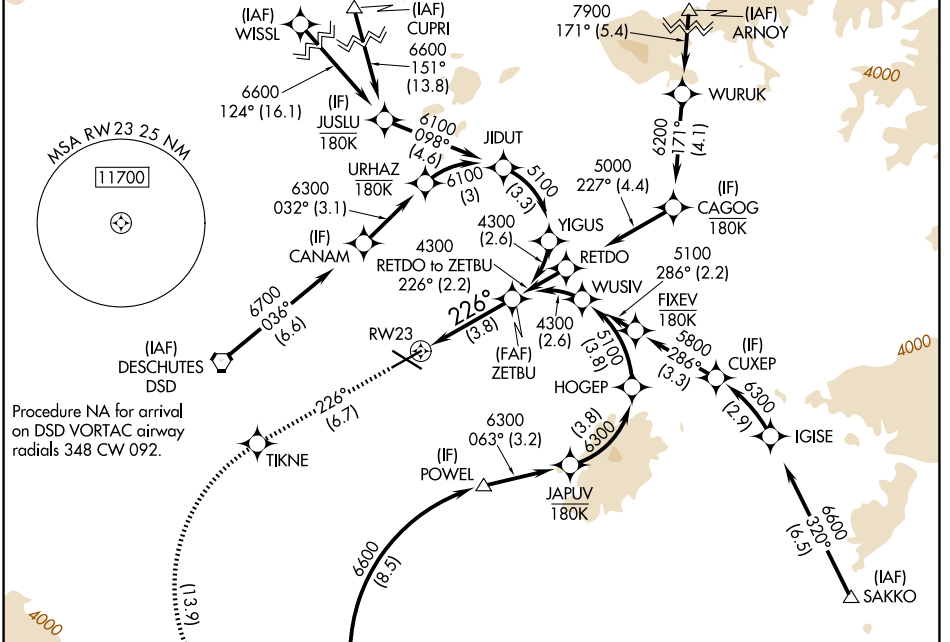
ROBERTS FLD (RDM)

RNP AR APCH - GPS, RF. Authorization required. From ARNOY: min RNP 0.70.

MALSRS MISSED APPROACH: Climb to 8500 on track 226° to TIKNE left turn to PUKAJ and on track 090° to URBIA and hold, continue climb-in-hold to 8500.

For uncompensated Baro-VNAV systems, procedure NA below -16°C or above 54°C. For inop ALS, increase RNP 0.10 all Cats visibility to 3/4 SM. For inop ALS, increase RNP 0.30 all Cats visibility to 1 3/8 SM.

ATIS	SEATTLE CENTER	REDMOND TOWER*	GND CON	UNICOM
119.025	126.15 269.475	124.5 (CTAF) 256.8	121.8	122.95



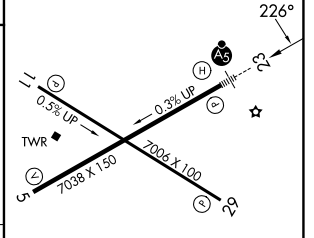
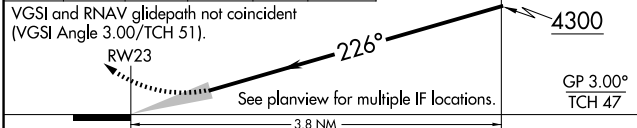
Procedure NA for arrival on DSD VORTAC airway radials 348 CW 092.

NW-1, 25 DEC 2025 to 22 JAN 2026

NW-1, 25 DEC 2025 to 22 JAN 2026

ELEV 3082		TDZE 3067
-----------	--	-----------

8500	TIKNE	PUKAJ	URBIA	ZETBU
tr 226°			tr 090°	4300



CATEGORY	A	B	C	D
RNP 0.10 DA		3322-1/2	255 (300-1/2)	
RNP 0.30 DA		3552-1	485 (500-1)	

- REIL Rwy 5, 11, and 29
- HIRL Rwy 5-23
- MIRL Rwy 11-29

AUTHORIZATION REQUIRED