

# RNAV (RNP) W RWY 35L

RENO/TAHOE INTL (RNO)

APP CRS <b>347°</b>	Rwy Ldg TDZE Apt Elev	<b>10011</b> <b>4410</b> <b>4415</b>
------------------------	-----------------------------	--

RNP AR APCH - GPS.

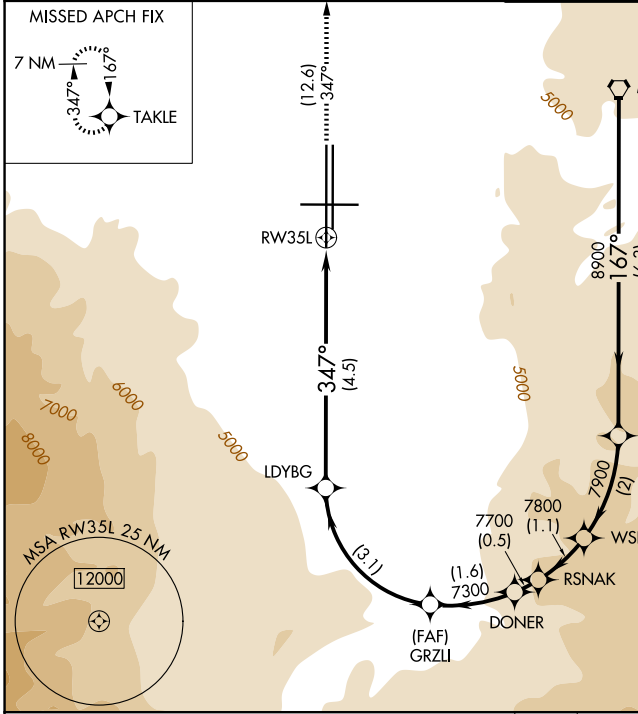
**⚠** For uncompensated Baro-VNAV systems, procedure NA below -9°C or above 35°C.

**❄** -13°C

**MALS/R**

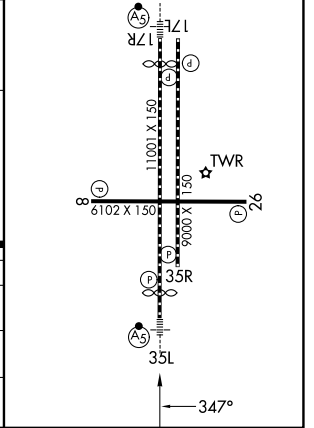
**MISSED APPROACH:** Climb to 11000 on track 347° to TAKLE and hold, continue climb-in-hold to 11000. \*Missed approach requires minimum climb of 300 feet per NM to 7140.

D-ATIS <b>135.8 363.0</b>	NORCAL APP CON <b>119.2 279.55 126.3 353.9</b>	RENO TOWER <b>118.7 257.8</b>	GND CON <b>121.9 348.6</b>
------------------------------	---	----------------------------------	-------------------------------



ELEV 4415	<b>D</b> TDZE 4410
HIRL Rwys 17R-35L and 17L-35R	
REIL Rwys 8, 17L, 26, and 35R	
MIRL Rwy 8-26	

FMG VORTAC	VCITY	WSHOE	RSNAK	DONER	GRZLI	LDYBG	RW35L
10000	8900	7900	7800	7700	7300	6155	
GP 3.50° TCH 72							
	6.3 NM	2 NM	1.1 NM	0.5 NM	1.6 NM	3.1 NM	4.5 NM
CATEGORY	A	B	C	D			
RNP 0.10 DA*	4736-1/2		326 (400-1/2)				
RNP 0.30 DA	5349-2		939 (1000-2)				
<b>AUTHORIZATION REQUIRED</b>							



SW-4, 25 DEC 2025 to 22 JAN 2026

SW-4, 25 DEC 2025 to 22 JAN 2026