

RNAV (RNP) W RWY 35R

RENO/TAHOE INTL (RNO)

APP CRS 347°	Rwy Ldg TDZE Apt Elev	9000 4408 4415
------------------------	-----------------------------	---

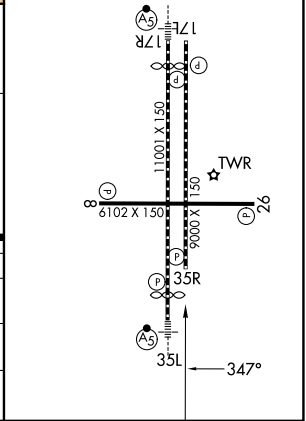
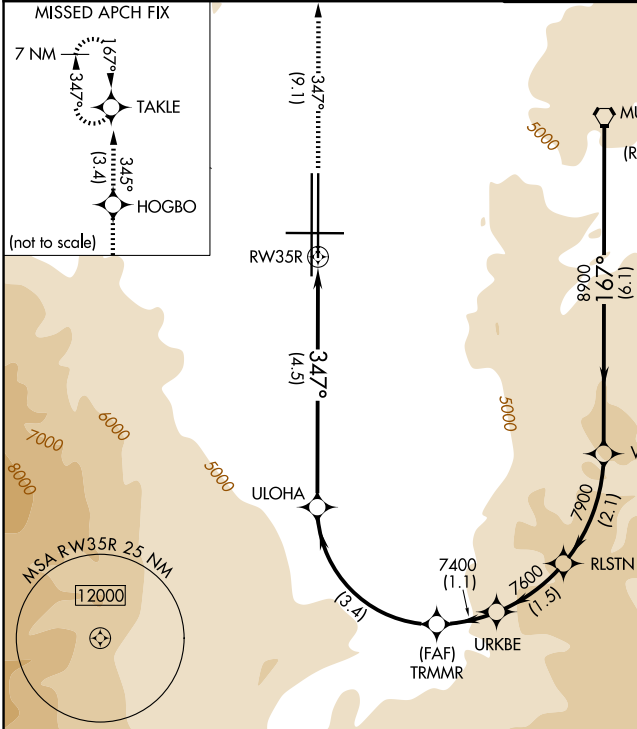
RNP AR APCH - GPS.

For uncompensated Baro-VNAV systems, procedure NA below -9°C or above 34°C.

-13°C

MISSED APPROACH: Climb to 11000 on track 347° to HOGBO and on track 345° to TAKLE and hold, continue climb-in-hold to 11000.
*Missed approach requires minimum climb of 301 feet per NM to 7150.

D-ATIS 135.8 363.0	NORCAL APP CON 119.2 279.55 126.3 353.9	RENO TOWER 118.7 257.8	GND CON 121.9 348.6
------------------------------	---	----------------------------------	-------------------------------



FMG VORTAC	VRGNA	RLSTN	URKBE	11000	HOGBO	TAKLE
10000	8900	7900	7600	7400	6156	347°
GP 3.50°	TCH 75					
6.1 NM	2.1 NM	1.5 NM	1.1 NM	3.4 NM	4.5 NM	
CATEGORY	A	B	C	D		
RNP 0.11 DA*	4762-1 354 (400-1)					
RNP 0.30 DA	5349-2½ 941 (1000-2½)					
AUTHORIZATION REQUIRED						

SW-4, 25 DEC 2025 to 22 JAN 2026

SW-4, 25 DEC 2025 to 22 JAN 2026