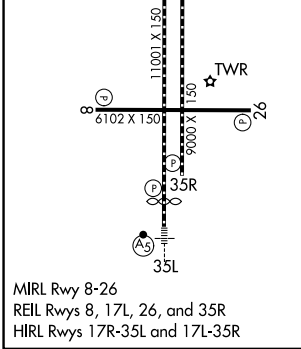
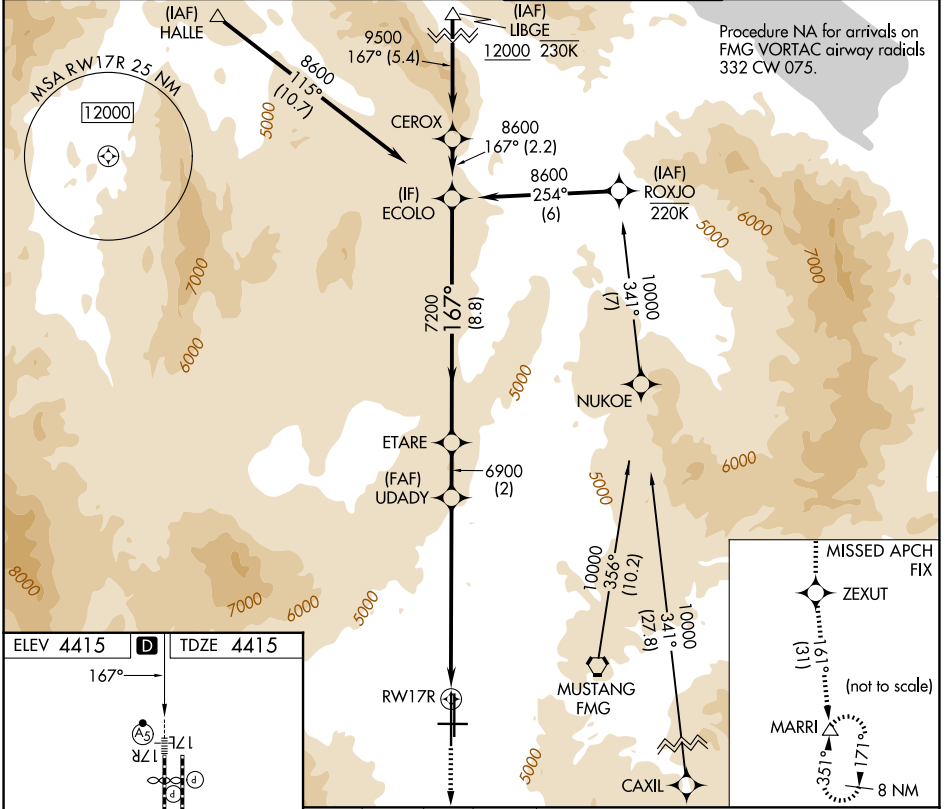


| | | |
|--|------------------------|--|
| WAAS CH 78309 W17B | APP CRS 167° | Rwy Ldg 10001 TDZE 4415 Apt Elev 4415 |
|--|------------------------|--|

RNAV (GPS) X RWY 17R

RENO/TAHOE INTL (RNO)

| | | | | |
|--|---|----------------------------------|---|--|
| RNP APCH - GPS. | | MALSR | MISSED APPROACH: Climb to 13000 direct ZEXUT and on track 161° to MARRI and hold. | |
| <p>For inop ALS, increase LPV all Cats visibility to 2 1/2 SM. Inop table does not apply to LNAV all Cats.</p> | | | | |
| D-ATIS 135.8 363.0 | NORCAL APP CON 119.2 279.55 126.3 353.9 | RENO TOWER 118.7 257.8 | GND CON 121.9 348.6 | |



| | | | | |
|----------|----------------------------|--------------------------|--|---------------|
| 13000 | ZEXUT | MARRI | VGSI and RNAV glidepath not coincident (VGSI Angle 3.06/TCH 77). | |
| ↑ | ✧ | △ | UDADY | ETARE |
| tr 161° | | | 6900 | 8600 |
| | | | 5.2 NM to RWY 17R | 7200 |
| | | | 6900 | GP 3.16° |
| | | | 5.2 NM | TCH 59 |
| | | | 2.1 NM | |
| | | | 2 NM | |
| | | | 8.8 NM | |
| CATEGORY | A | B | C | D |
| LPV DA | 5239-1 7/8 824 (900-1 7/8) | | | |
| LNAV MDA | 6200/40 1785 (1800-3/4) | 6200/55 1785 (1800-1) | 6200-3 | 1785 (1800-3) |

SW-4, 25 DEC 2025 to 22 JAN 2026

SW-4, 25 DEC 2025 to 22 JAN 2026