

RNAV (GPS) X RWY 35R

RENO/TAHOE INTL (RNO)

APP CRS 347°	Rwy Ldg 9000
	TDZE 4408
	Apt Elev 4415

RNP APCH - GPS.

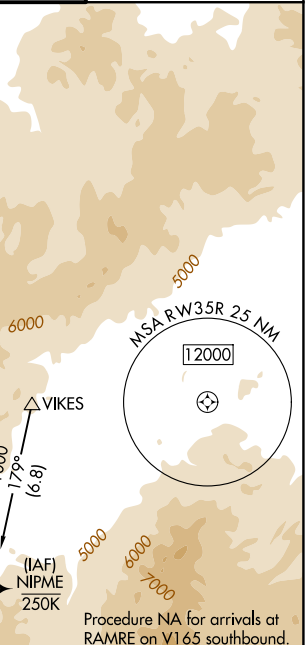
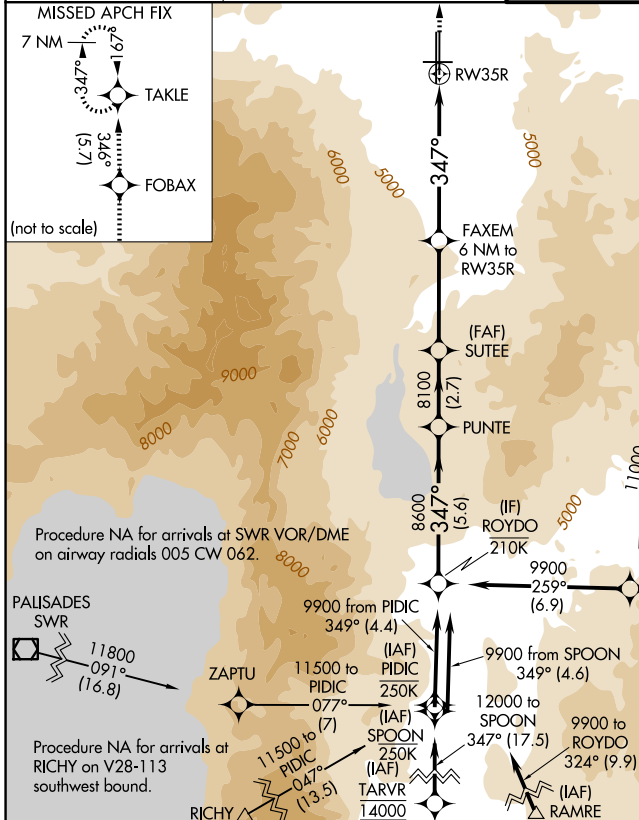
⚠ Circling Rwy 8 NA at night. Rwy 35R helicopter visibility reduction below 3/4 SM NA.

⚠ -13°C Baro-VNAV NA.

MISSED APPROACH: Climb to 11000 direct FOBAX and on track 346° to TAKLE and hold, continue climb-in-hold to 11000.

*Missed approach requires minimum climb of 250 feet per NM to 5600.

D-ATIS 135.8 363.0	NORCAL APP CON 119.2 279.55 126.3 353.9	RENO TOWER 118.7 257.8	GND CON 121.9 348.6
------------------------------	---	----------------------------------	-------------------------------



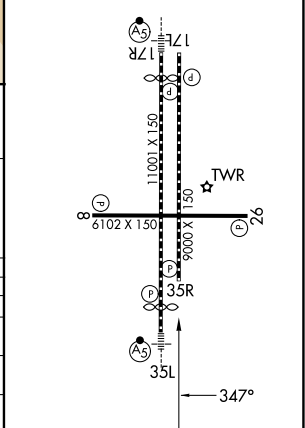
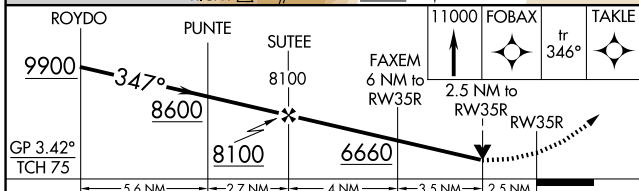
Procedure NA for arrivals at SWR VOR/DME on airway radials 005 CW 062.

PALISADES SWR
11800 091° (16.8)

Procedure NA for arrivals at RICHY on V28-113 southwest bound.

Procedure NA for arrivals at RAMRE on V165 southbound.

ELEV 4415	D TDZE 4408
HIRL Rwys 17R-35L and 17L-35R	
REIL Rwys 8, 17L, 26, and 35R	
MIRL Rwy 8-26	



CATEGORY	A	B	C	D
LNNAV/VNAV DA	5471-4 1063 (1100-4)			
LNNAV MDA*	5380-1 1/4 972 (1000-1 1/4)	5380-1 1/2 972 (1000-1 1/2)	5380-3	972 (1000-3)
LNNAV MDA	5500-1 1/4 1092 (1100-1 1/4)	5500-1 1/2 1092 (1100-1 1/2)	5500-3	1092 (1100-3)
CIRCLING	5500-1 1/4 1085 (1100-1 1/4)	5500-1 1/2 1085 (1100-1 1/2)	6460-3	2045 (2100-3)

SW-4, 25 DEC 2025 to 22 JAN 2026

SW-4, 25 DEC 2025 to 22 JAN 2026