

TACAN Y RWY 14

TACAN RIV Chan 77	APCH CRS 106°	Rwy ldg 13,302 TDZE 1536 Arpt Elev 1536
--------------------------	----------------------	--

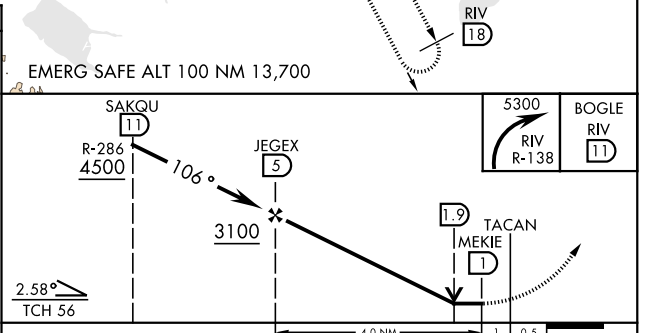
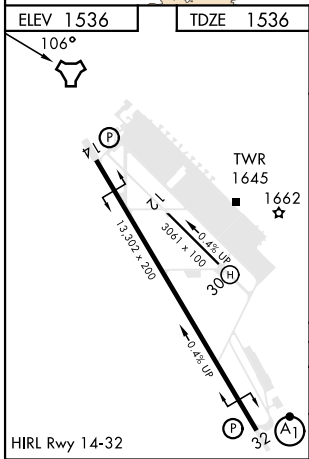
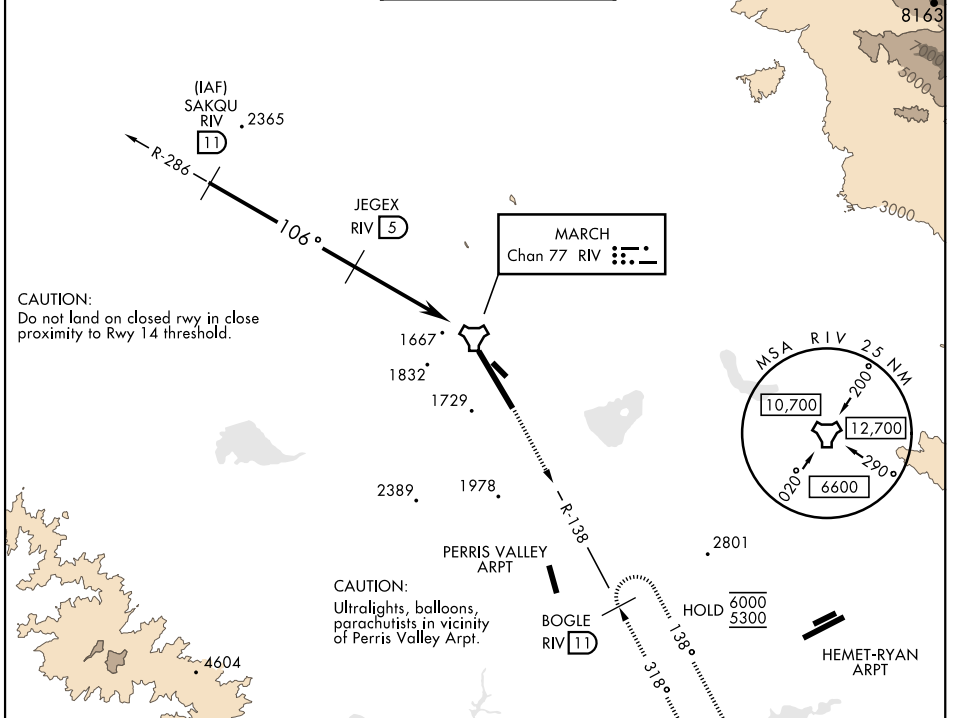
AL-348 [USAF]

MARCH ARB (KRIV)

⚠ * Circling not authorized NE of Rwy 14-32. Rapid rising terrain.

MISSED APPROACH: Climb out RIV TACAN R-138 direct BOGLE, continue to climb in hold to 5300.

ATIS 134.75 239.05	APP/DEP CON ★ 133.5 306.975	TOWER 127.65 253.5	GND CON 121.75 335.8	CLNC DEL 127.775 268.7
---------------------------	------------------------------------	---------------------------	-----------------------------	-------------------------------



CATEGORY	A	B	C	D	E
S-14	2260-17/8 724 (800-17/8)		2260-2 724 (800-2)		
CIRCLING*	2260-17/8 724 (800-17/8)	2260-17/8 724 (800-17/8)	2300-2 1/4 764 (800-2 1/4)	2440-3 904 (1000-3)	2840-3 1304 (1400-3)

TACAN Y RWY 14

SW-3, 25 DEC 2025 to 22 JAN 2026

SW-3, 25 DEC 2025 to 22 JAN 2026