

CHUUC SIX DEPARTURE (RNAV)

AL-360 (FAA)

ST LOUIS LAMBERT INTL (STL)

ST. LOUIS, MISSOURI

D-ATIS  
125.025 379.925

CLNC DEL

119.5 363.1

CPDLC

GND CON

121.9 348.6 (Inbound)

121.65 377.175 (Outbound)

118.925 227.125 (Rwy 11/29)

## ST. LOUIS TOWER

120.05 284.6 (Rwys 12L/30R, 24)

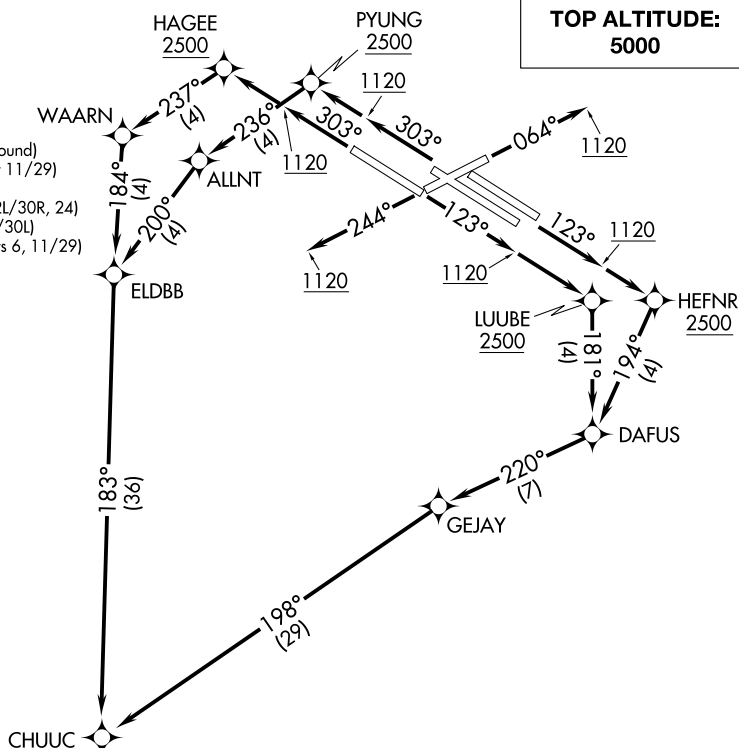
118.5 257.7 (Rwy 12R/30L)

132.475 239.275 (Rwys 6, 11/29)

ST. LOUIS DEP CON

128.1 307.05

**TOP ALTITUDE:**  
5000



NOTE: RNAV 1.

NOTE: DME/DME/IRU or GPS required.

NOTE: RADAR required.

NOTE: For use by turbojet aircraft only.

## TAKEOFF MINIMUMS

Rwy 6: Standard with minimum climb of 500' per NM to 1120 then minimum climb of 240' per NM to 5000.

Rwy 24: Standard with minimum climb of 500' per NM to 1120 then minimum climb of 260' per NM to 5000.

Rwy 11: Standard with minimum climb of 500' per NM to LUUBE.

Rwys 12L/R: Standard with minimum climb of 500' per NM to  
HEFNR.

Rwy 29: Standard with minimum climb of 500' per NM to HAGEE.

Rwys 30L/R: Standard with minimum climb of 500' per NM to  
PYUNG.

WALNUT  
AR

(NARRATIVE ON FOLLOWING PAGE)

NOTE: Chart not to scale.

CHUUC SIX DEPARTURE (RNAV)

ST. LOUIS, MISSOURI

ST LOUIS LAMBERT INTL (STL)

(CHUUC6.CHUUC) 19MAY22

NC-3, 25 DEC 2025 to 22 JAN 2026

NC-3, 25 DEC 2025 to 22 JAN 2026



DEPARTURE ROUTE DESCRIPTION

TAKEOFF RUNWAY 6: Climb heading 064° to 1120, then as assigned by ATC, expect RADAR vectors to CHUUC. Thence. . . .

TAKEOFF RUNWAY 24: Climb heading 244° to 1120, then as assigned by ATC, expect RADAR vectors to CHUUC. Thence. . . .

TAKEOFF RUNWAY 11: Climb heading 123° to 1120, then direct LUUBE, cross LUUBE at or above 2500, then on depicted route to CHUUC. Thence. . . .

TAKEOFF RUNWAYS 12L/R: Climb heading 123° to 1120, then direct HEFNR, cross HEFNR at or above 2500, then on depicted route to CHUUC. Thence. . . .

TAKEOFF RUNWAY 29: Climb heading 303° to 1120, then direct HAGEE, cross HAGEE at or above 2500, then on depicted route to CHUUC. Thence. . . .

TAKEOFF RUNWAYS 30L/R: Climb heading 303° to 1120, then direct PYUNG, cross PYUNG at or above 2500, then on depicted route to CHUUC. Thence. . . .

. . . . (transition). Maintain 5000, expect filed altitude 10 minutes after departure.

MYERZ TRANSITION (CHUUC6.MYERZ)

WALNUT RIDGE TRANSITION (CHUUC6.ARG)

NC-3, 25 DEC 2025 to 22 JAN 2026

NC-3, 25 DEC 2025 to 22 JAN 2026