

LOC I-SCH 109.7	APP CRS 040°	Rwy Ldg TDZE Apt Elev	7001 338 378
---------------------------	------------------------	-----------------------------	---

ILS or LOC RWY 4

SCHENECTADY COUNTY (SCH)

<p>NA</p> <p>Circling Rwy 10 NA at night. Inop table does not apply to S-ILS 4. For inop MALSR, increase S-LOC 4 Cat A/B visibility to 1 mile and Cat C/D visibility to 1 1/2 mile. For inoperative MALSR when using Albany altimeter setting, increase S-LOC 4 Cat A/B visibility to 1 mile. When using Albany altimeter setting inoperative table does not apply to S-ILS-4. ADF required. When local altimeter setting not received, use Albany altimeter setting and increase all DA 33 feet, and all MDA 40 feet. Helicopter visibility reduction below 3/4 SM NA.</p>	<p>MALSR</p>	<p>MISSED APPROACH: Climb to 1500 on 040° course and on HEU NDB bearing 045° then climbing right turn to 3700 direct HEU NDB and hold, continue climb-in-hold to 3700.</p>
	<p>ALBANY APP CON 132.825 263.075</p>	

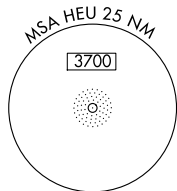
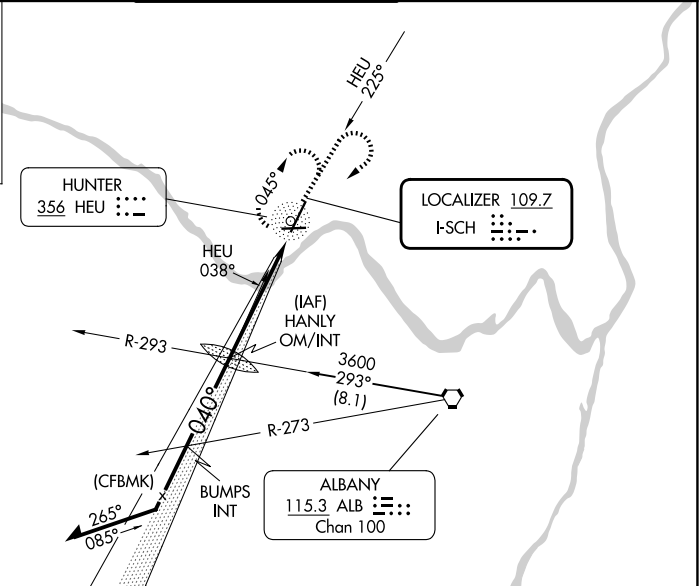
AWOS-3 119.275	ALBANY APP CON 132.825 263.075	SCHENECTADY TOWER * 121.3 (CTAF) 0 321.1	GND CON 121.9	UNICOM 122.95
--------------------------	--	--	-------------------------	-------------------------

ALTERNATE MISSED APCH FIX

ALBANY
ALB :
115.3
Chan 100

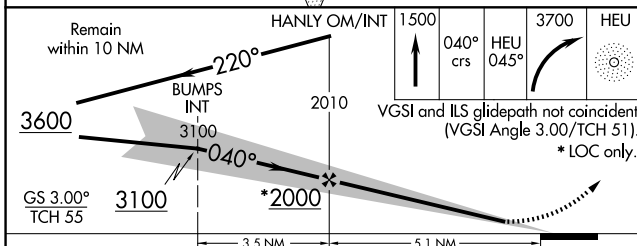
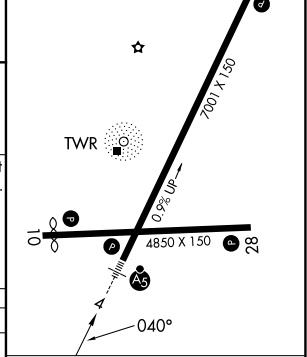
← R-283 103°

→ R-283 283°



ELEV 378	TDZE 338
----------	----------

REIL Rwy 28
HIRL Rwy 4-22
MIRL Rwy 10-28



CATEGORY	A	B	C	D
S-ILS 4	538-3/4 200 (200-3/4)			
S-LOC 4	820-3/4	482 (500-3/4)	820-1	482 (500-1)
CIRCLING	880-1 502 (600-1)	940-1 562 (600-1)	1120-2 1/4 742 (800-2 1/4)	1320-3 942 (1000-3)

FAF to MAP 5.1 NM					
Knots	60	90	120	150	180
Min:Sec	5:06	3:24	2:33	2:02	1:42

NE-2, 25 DEC 2025 to 22 JAN 2026

NE-2, 25 DEC 2025 to 22 JAN 2026