


ATIS  
135.825 270.1  
GND CON  
118.175 279.65  
TOWER  
124.8 259.3  
SEATTLE DEP CON  
126.5 377.15

If unable to make ATC charted crossing  
restriction advise ATC prior to departure.

RADAR required

Maximum 250 KIAS  
Radar vectors required within 10 NM after departure.



SEATTLE

116.8 SEA

Chan 115

MCCHORD

Chan 33 TCM

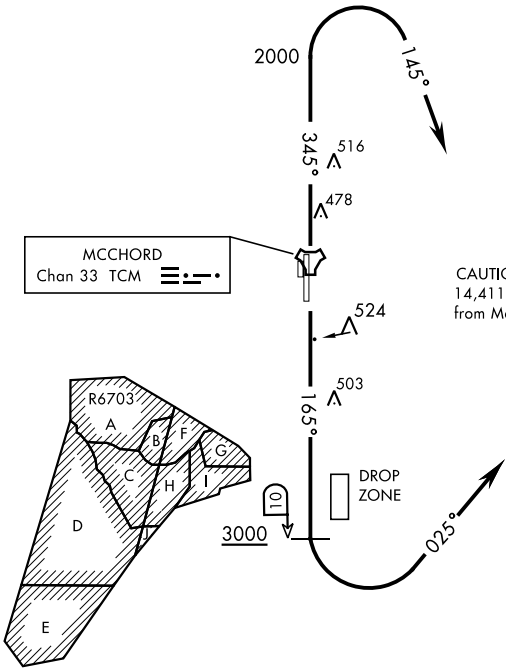


OLYMPIA

113.4 OLM

Chan 81

CAUTION: Mountains to  
14,411' 103° 34 NM  
from McChord.



DEPARTURE ROUTE DESCRIPTION

TAKEOFF RWY 16: Climb on track 165° to cross TCM TACAN 10 DME at or above 3000. Then turn left tracking 025° to expect radar vectors. Maintain ATC assigned altitude.

TAKEOFF RWY 34: Climb on track 165° to cross TCM TACAN 10 DME at or above 3000. Then turn right tracking 025° to expect radar vectors. Maintain ATC assigned altitude.

NW-1, 25 DEC 2025 to 22 JAN 2026

NW-1, 25 DEC 2025 to 22 JAN 2026