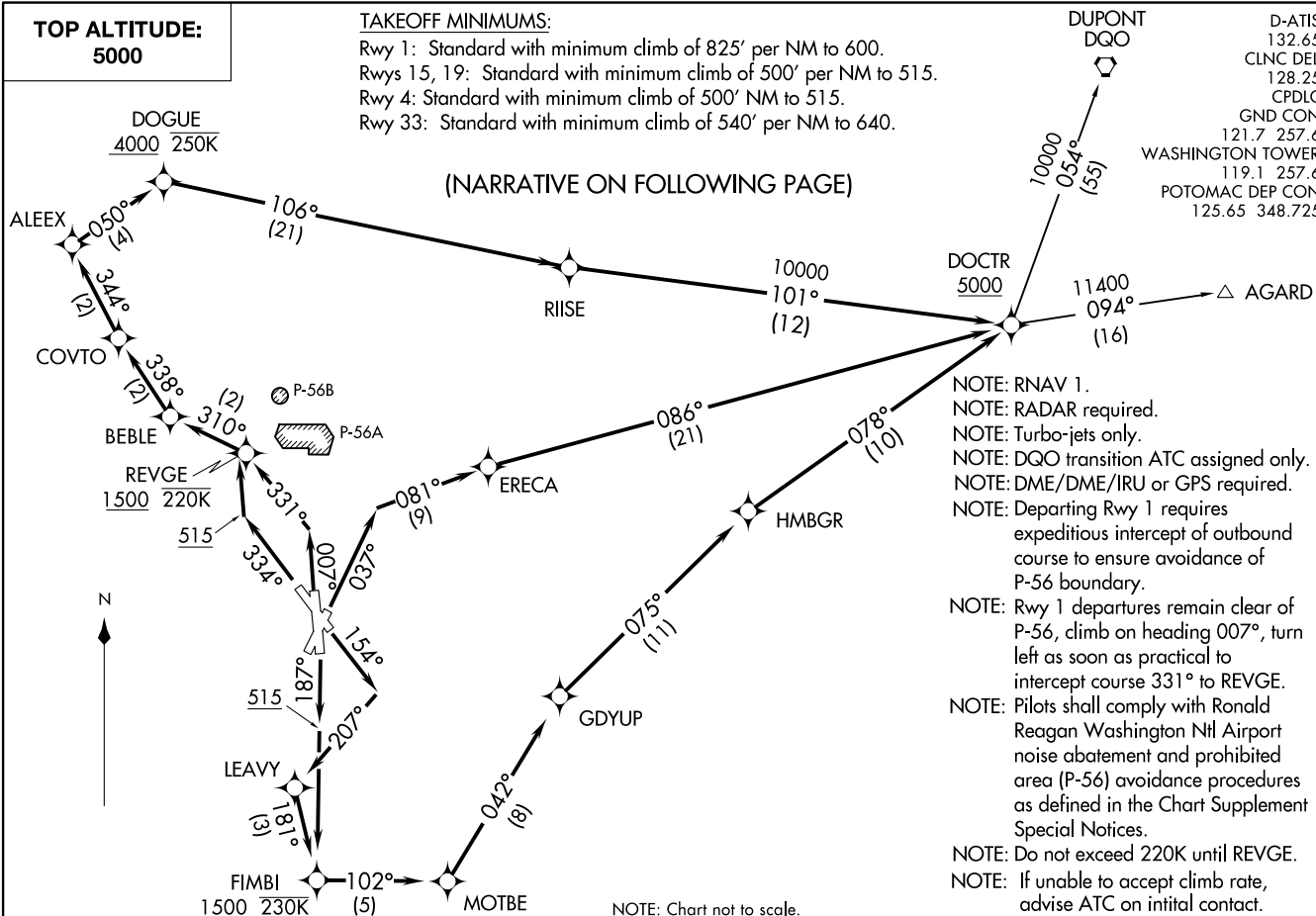


DOCTR FIVE DEPARTURE (RNAV)
(DOCTR5.DOCTR) 31 DEC 20WASHINGTON, DC
RONALD REAGAN WASHINGTON NTL (DCA)**TOP ALTITUDE:
5000**TAKEOFF MINIMUMS:

Rwy 1: Standard with minimum climb of 825' per NM to 600.
 Rwys 15, 19: Standard with minimum climb of 500' per NM to 515.
 Rwy 4: Standard with minimum climb of 500' NM to 515.
 Rwy 33: Standard with minimum climb of 540' per NM to 640.

(NARRATIVE ON FOLLOWING PAGE)



D-ATIS 132.65
 CLNC DEL 128.25
 CPDLC
 GND CON 121.7 257.6
 WASHINGTON TOWER 119.1 257.6
 POTOMAC DEP CON 125.65 348.725

DOCTR5.DOCTR 21112
DOCTR FIVE DEPARTURE (RNAV)

AL-443 (FAA)

RONALD REAGAN WASHINGTON NTL (DCA)
WASHINGTON, DC

<div><div>▼</div><div>DEPARTURE ROUTE DESCRIPTION</div><div><div>TAKEOFF RUNWAY 1:</div><div>Climb on heading 007° to intercept course 331° to REVGE, cross REVGE at or above 1500 and at or below 220K, then on track 310° to BEBLE, then on track 338° to COVTO, then on track 344 to ALEEX, then on track 050° to DOGUE, cross DOGUE at or above 4000 and at or below 250K, then on track 106° to RIISE, then on track 101° to DOCTR, cross DOCTR at or above 5000, thence....</div><div>TAKEOFF RUNWAY 4:</div><div>Climb on heading 037° to intercept course 081° to ERECA, then on track 086° to DOCTR, cross DOCTR at or above 5000, thence....</div><div>TAKEOFF RUNWAY 15:</div><div>Climb on heading 154° to intercept course 207° to LEAVY, then on track 181° to FIMBI, cross FIMBI at or above 1500 and at or below 230K, then on track 102° to MOTBE, then on track 042° to GDYUP, then on track 075° to HMBGR, then on track 078° to DOCTR, cross DOCTR at or above 5000, thence....</div><div>TAKEOFF RUNWAY 19:</div><div>Climb on heading 187° to 515, then direct FIMBI, cross FIMBI at or above 1500 and at or below 230 K, then on track 102° to MOTBE, then on track 042° to GDYUP, then on track 075° to HMBGR, then on track 078° to DOCTR, cross DOCTR at or above 5000, thence....</div><div>TAKEOFF RUNWAY 33:</div><div>Climb on heading 334° to 515, then direct REVGE, cross REVGE at or above 1500 and at or below 220K, then on track 310° to BEBLE, then on track 339° to COVTO, then on track 344° to ALEEX, then on track 050° to DOGUE, cross DOGUE at or above 4000 and at or below 250K, then on track 106° to RIISE, then on track 101° to DOCTR, cross DOCTR at or above 5000, thence....</div><div>....on assigned transition. Maintain 5000. Expect clearance to filed altitude within ten (10) minutes after departure.</div><div><div>AGARD TRANSITION (DOCTR5.AGARD)</div><div>DUPONT TRANSITION (DOCTR5.DQO)</div></div></div></div>	
--	--