

(SCRAM6, SCRAM) 21112  
SCRAM SIX DEPARTURE (RNAV)

AL-443 (FAA)

RONALD REAGAN WASHINGTON NTL (DCA)  
WASHINGTON, DC

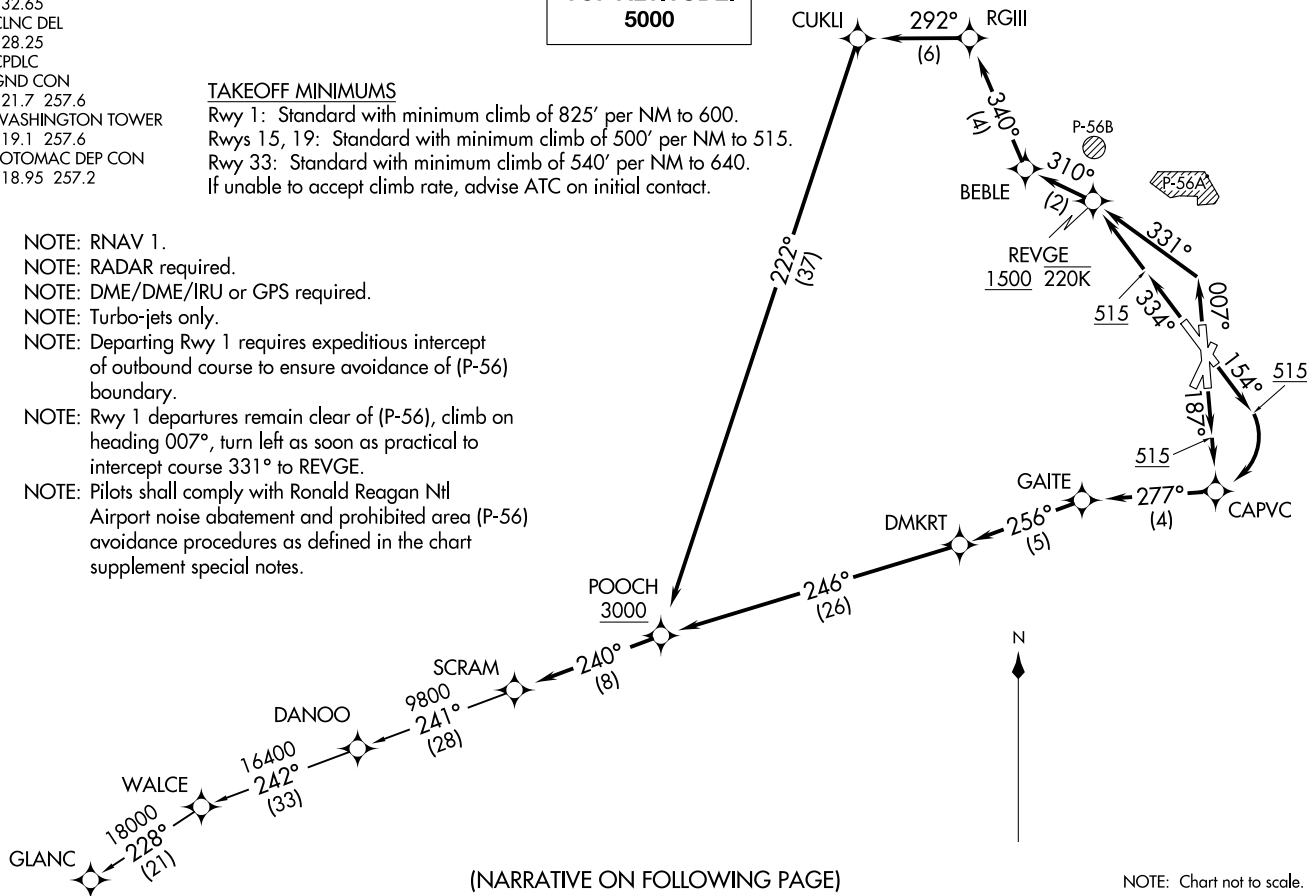
**TOP ALTITUDE:  
5000**

**TAKEOFF MINIMUMS**

Rwy 1: Standard with minimum climb of 825' per NM to 600.  
Rwys 15, 19: Standard with minimum climb of 500' per NM to 515.  
Rwy 33: Standard with minimum climb of 540' per NM to 640.  
If unable to accept climb rate, advise ATC on initial contact.

D-ATIS  
132.65  
CLNC DEL  
128.25  
CPDLC  
GND CON  
121.7 257.6  
WASHINGTON TOWER  
119.1 257.6  
POTOMAC DEP CON  
118.95 257.2

- NOTE: RNAV 1.  
NOTE: RADAR required.  
NOTE: DME/DME/IRU or GPS required.  
NOTE: Turbo-jets only.  
NOTE: Departing Rwy 1 requires expeditious intercept of outbound course to ensure avoidance of (P-56) boundary.  
NOTE: Rwy 1 departures remain clear of (P-56), climb on heading 007°, turn left as soon as practical to intercept course 331° to REVGE.  
NOTE: Pilots shall comply with Ronald Reagan Ntl Airport noise abatement and prohibited area (P-56) avoidance procedures as defined in the chart supplement special notes.



(NARRATIVE ON FOLLOWING PAGE)

SCRAM SIX DEPARTURE (RNAV)  
(SCRAM6, SCRAM) 31 DECCO

WASHINGTON, DC  
RONALD REAGAN WASHINGTON NTL (DCA)



DEPARTURE ROUTE DESCRIPTION

TAKEOFF RUNWAY 1: Climb on heading 007° to intercept course 331° to REVGE, cross REVGE at or above 1500 and at or below 220K, then on track 310° to BEBLE, then on track 340° to RGIII, then on track 292° to CUKLI, then on track 222° to POOCH, cross POOCH at or above 3000, thence . . . .

TAKEOFF RUNWAY 15: Climb on heading 154° to 515, then right turn direct CAPVC, then on track 277° to GAITE, then on track 256° to DMKRT, then on track 246° to POOCH, cross POOCH at or above 3000, thence . . . .

TAKEOFF RUNWAY 19: Climb on heading 187° to 515, then direct CAPVC, then on track 277° to GAITE, then on track 256° to DMKRT, then on track 246° to POOCH, cross POOCH at or above 3000, thence . . . .

TAKEOFF RUNWAY 33: Climb on heading 334° to 515, then direct REVGE, cross REVGE at or above 1500 and at or below 220K, then on track 310° to BEBLE, then on track 340° to RGIII, then on track 292 ° to CUKLI, then on track 222° to POOCH, cross POOCH at or above 3000, thence . . . .

. . . . then on track 240° to SCRAM, then as depicted. Maintain 5000.  
Expect clearance to filed altitude within 10 minutes after departure.

GLANC TRANSITION (SCRAM6.GLANC):

NE-3, 25 DEC 2025 to 22 JAN 2026

NE-3, 25 DEC 2025 to 22 JAN 2026