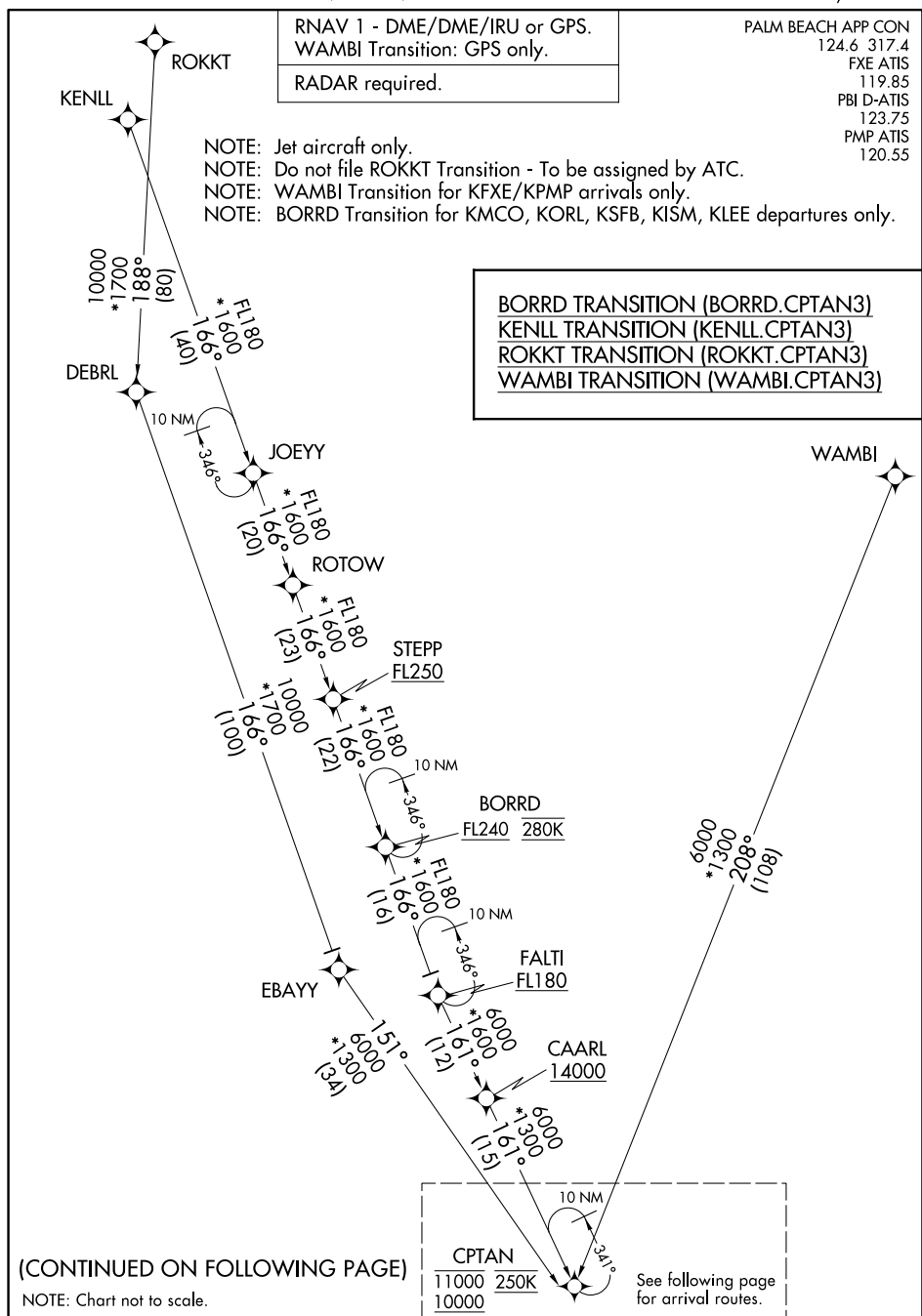


CPTAN THREE ARRIVAL (RNAV) Transition Routes

WEST PALM BEACH, FLORIDA



CPTAN THREE ARRIVAL (RNAV) Transition Routes

WEST PALM BEACH, FLORIDA

(CPTAN.CPTAN3) 25JAN24

SE-3, 25 DEC 2025 to 22 JAN 2026

AL-449 (FAA)

CPTAN THREE ARRIVAL (RNAV) Arrival Routes

WEST PALM BEACH, FLORIDA

PALM BEACH APP CON
124.6 317.4
FXE ATIS
119.85
PBI D-ATIS
123.75
PMP ATIS
120.55

RNAV 1 - DME/DME/IRU or GPS.

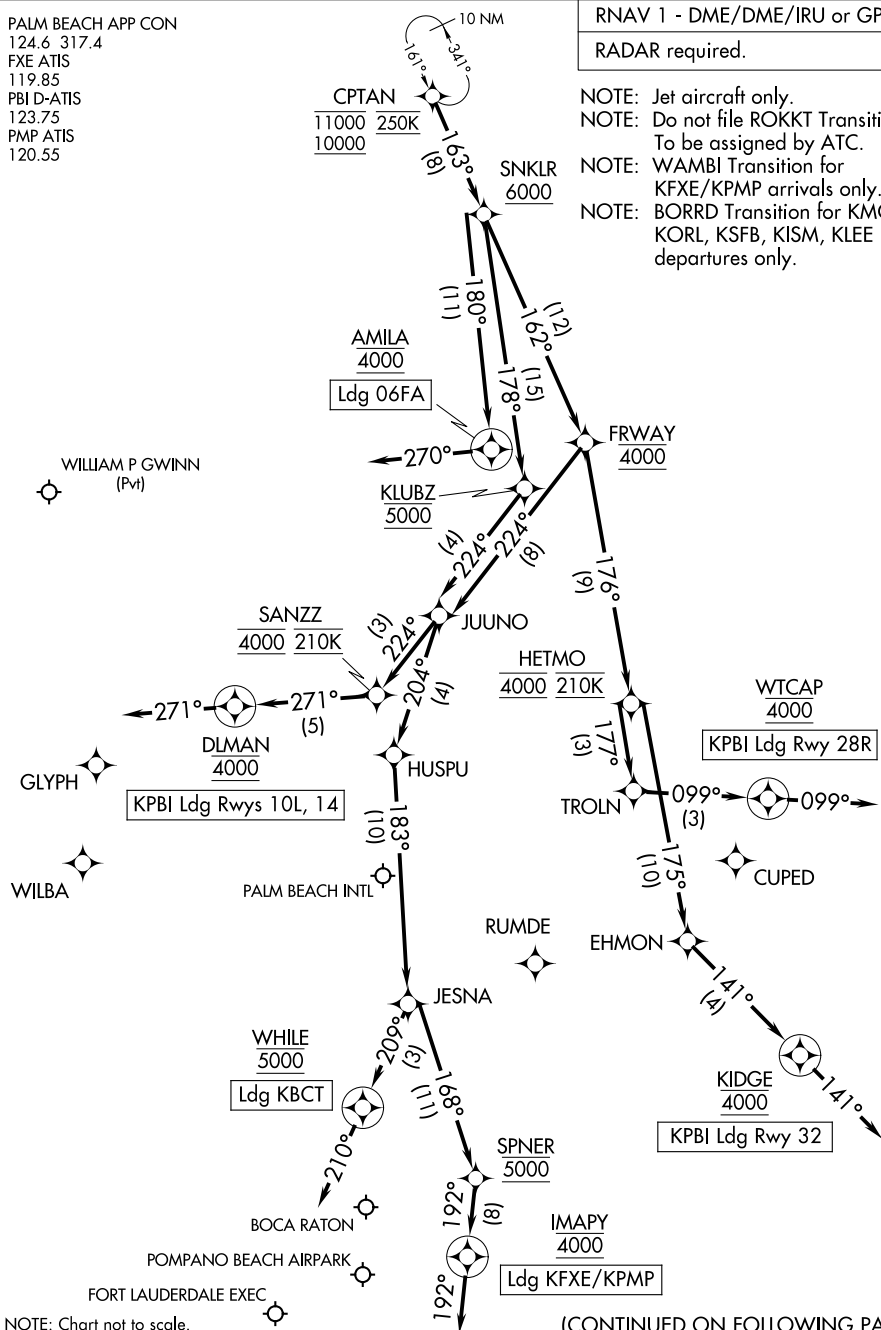
RADAR required.

NOTE: Jet aircraft only.

NOTE: Do not file ROKKT Transition -
To be assigned by ATC.

NOTE: WAMBI Transition for
KFEX/KPMP arrivals only.

NOTE: BORRD Transition for KMCO,
KORL, KSFB, KISM, KLEE
departures only.



(CONTINUED ON FOLLOWING PAGE)

CPTAN THREE ARRIVAL (RNAV) Arrival Routes

WEST PALM BEACH, FLORIDA

(CPTAN.CPTAN3) 25JAN24

SE-3, 25 DEC 2025 to 22 JAN 2026

ARRIVAL ROUTE DESCRIPTION

- KPBI: From CPTAN on track 163° to cross SNKLR at or above 6000.
- LANDING KPBI RUNWAYS 10L, 14: From SNKLR on track 162° to cross FRWAY at 4000, then on track 224° to JUUNO, then on track 224° to cross SANZZ at 4000 and at 210K, then on track 271° to cross DLMAN at 4000, then on track 271°. Expect RADAR vectors to final approach course.
- LANDING KPBI RUNWAY 28R: From SNKLR on track 162° to cross FRWAY at 4000, then on track 176° to cross HETMO at 4000 and at 210K, then on track 177° to TROLN, then on track 099° to cross WTCAP at 4000, then on track 099°. Expect RADAR vectors to final approach course.
- LANDING KPBI RUNWAY 32: From SNKLR on track 162° to cross FRWAY at 4000, then on track 176° to cross HETMO at 4000 and at 210K, then on track 175° to EHMON, then on track 141° to cross KIDGE at 4000, then on track 141°. Expect RADAR vectors to final approach course.
- LANDING 06FA: From CPTAN on track 163° to cross SNKLR at or above 6000, then on track 180° to cross AMILA at 4000, then on heading 270°. Expect RADAR vectors to final approach course.
- LANDING KBCT: From CPTAN on track 163° to cross SNKLR at or above 6000, then on track 178° to cross KLUBZ at 5000, then on track 224° to JUUNO, then on track 204° to HUSPU, then on track 183° to JESNA, then on track 209° to cross WHILE at 5000, then on heading 210°. Expect RADAR vectors to final approach course.
- LANDING KFXE/KPMP: From CPTAN on track 163° to cross SNKLR at or above 6000, then on track 178° to cross KLUBZ at 5000, then on track 224° to JUUNO, then on track 204° to HUSPU, then on track 183° to JESNA, then on track 168° to cross SPNER at 5000, then on track 192° to cross IMAPY at 4000, then on track 192°. Expect RADAR vectors to final approach course.