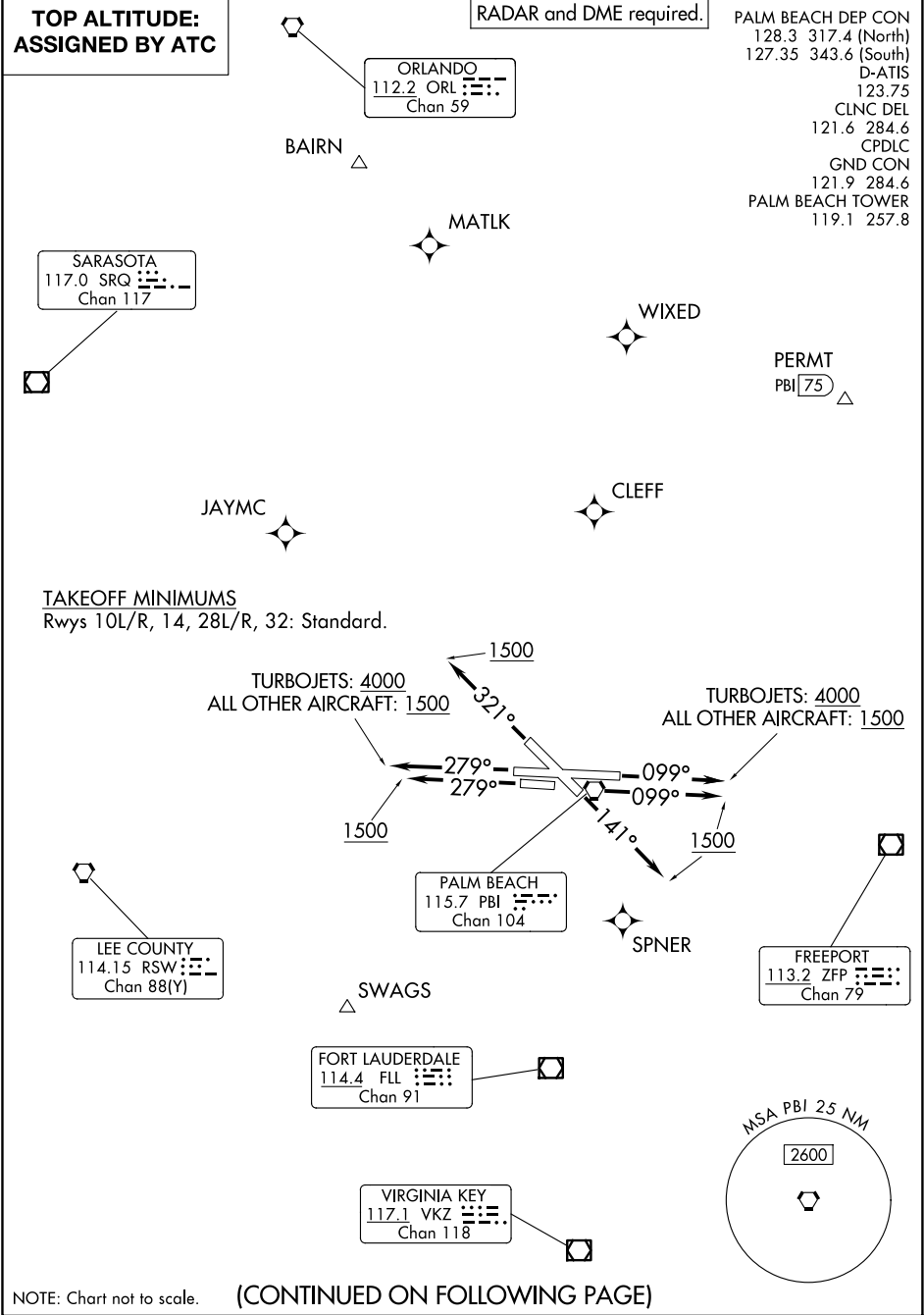


(PBI3.PBI) 25107

AL-449 (FAA)

PALM BEACH THREE DEPARTURE

PALM BEACH INTL (PBI)
WEST PALM BEACH, FLORIDA



NOTE: Chart not to scale.

(CONTINUED ON FOLLOWING PAGE)

PALM BEACH THREE DEPARTURE

(PBI3.PBI) 17APR25

WEST PALM BEACH, FLORIDA
PALM BEACH INTL (PBI)

SE-3, 25 DEC 2025 to 22 JAN 2026

SE-3, 25 DEC 2025 to 22 JAN 2026



DEPARTURE ROUTE DESCRIPTION

TURBOJETS:

- TAKEOFF RUNWAY 10L: Climb on heading 099° to 4000 or as assigned by ATC, thence...
- TAKEOFF RUNWAY 14: Climb on heading 141° to 1500 or as assigned by ATC, thence...
- TAKEOFF RUNWAY 28R: Climb on heading 279° to 4000 or as assigned by ATC, thence...
- TAKEOFF RUNWAY 32: Climb on heading 321° to 1500 or as assigned by ATC, thence...

ALL OTHER AIRCRAFT:

- TAKEOFF RUNWAYS 10L/R: Climb on heading 099° to 1500 or as assigned by ATC, thence...
- TAKEOFF RUNWAY 14: Climb on heading 141° to 1500 or as assigned by ATC, thence...
- TAKEOFF RUNWAYS 28L/R: Climb on heading 279° to 1500 or as assigned by ATC, thence...
- TAKEOFF RUNWAY 32: Climb on heading 321° to 1500 or as assigned by ATC, thence...

... expect RADAR vectors to assigned/ filed route. Maintain ATC assigned altitude.
Expect further clearance to filed altitude 10 minutes after departure.

SE-3, 25 DEC 2025 to 22 JAN 2026

SE-3, 25 DEC 2025 to 22 JAN 2026