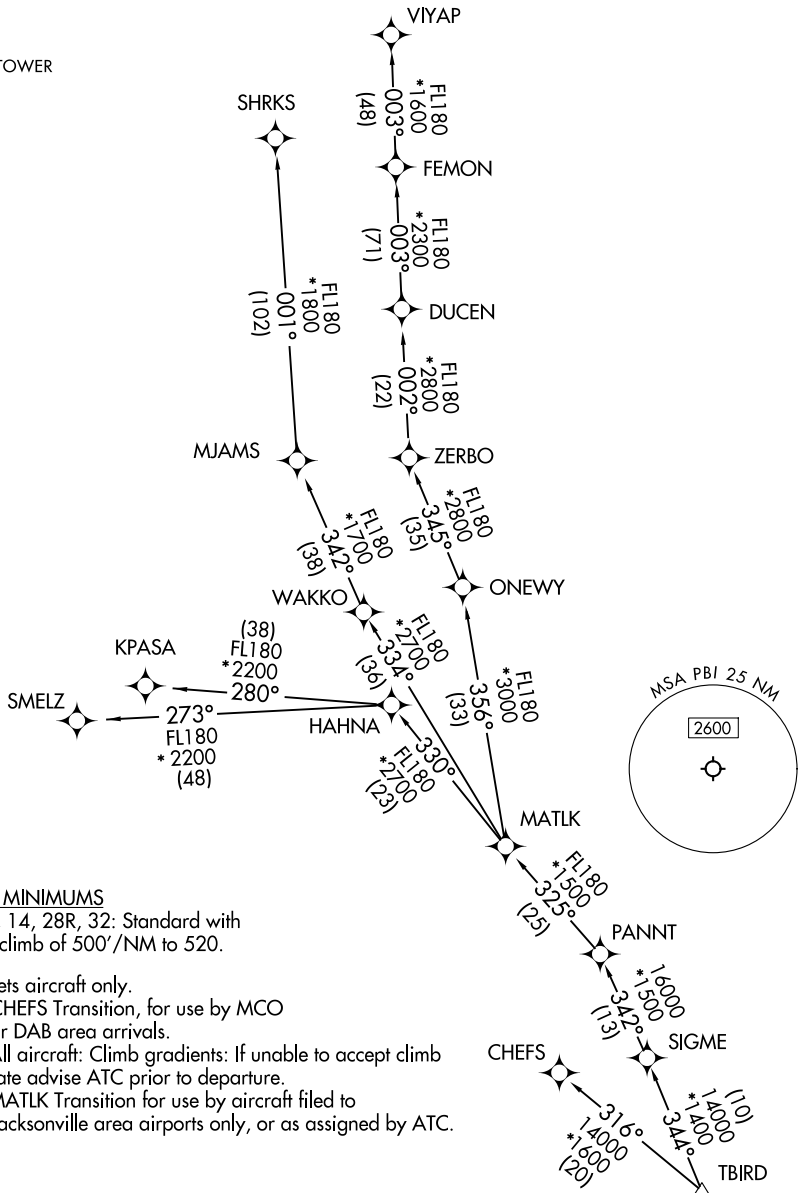


SE-3, 25 DEC 2025 to 22 JAN 2026

SE-3, 25 DEC 2025 to 22 JAN 2026

PALM BEACH INTL (PBI)  
WEST PALM BEACH, FLORIDA

**TOP ALTITUDE:**  
**11000**



NOTE: MATLK Transition for use by aircraft filed to Jacksonville area airports only, or as assigned by ATC.

(CONTINUED ON FOLLOWING PAGE)

WEST PALM BEACH, FLORIDA  
PALM BEACH INTL (PBI)

(TBIRD6.TBIRD) 31OCT24



DEPARTURE ROUTE DESCRIPTION

TAKEOFF RUNWAY 10L: Climb on heading 099° to 520, then direct to cross CRRMN at or above 2500, then on track 017° to cross SMGLR at or above 4000, then on track 015° to SONNC, then on track 295° to cross AHABB at or above 6000, then on track 295° to cross BAGGR at or above 10000, thence. . . .

TAKEOFF RUNWAY 14: Climb on heading 141° to intercept course 088° to cross CRRMN at or above 2500, then on track 017° to cross SMGLR at or above 4000, then on track 015° to SONNC, then on track 295° to cross AHABB at or above 6000, then on track 295° to cross BAGGR at or above 10000, thence. . . .

TAKEOFF RUNWAY 28R: Climb on heading 279° to 520, then direct to cross CRYER at or above 2500, then on track 308° to cross UTLEY at or above 4000, then on track 342° to cross BAGGR at or above 10000, thence. . . .

TAKEOFF RUNWAY 32: Climb on heading 321° to 520, then direct BAYBE, then on track 319° to cross BAGGR at or above 10000, thence. . . .  
. . . .on track 345° to TBIRD, then on assigned transition, maintain 11000.  
Expect filed altitude 10 minutes after departure.

- CHEFS TRANSITION (TBIRD6.CHEFS)
- KPASA TRANSITION (TBIRD6.KPASA)
- MATLK TRANSITION (TBIRD6.MATLK)
- SHRKS TRANSITION (TBIRD6.SHRKS)
- SMELZ TRANSITION (TBIRD6.SMELZ)
- VIYAP TRANSITION (TBIRD6.VIYAP)

SE-3, 25 DEC 2025 to 22 JAN 2026

SE-3, 25 DEC 2025 to 22 JAN 2026