

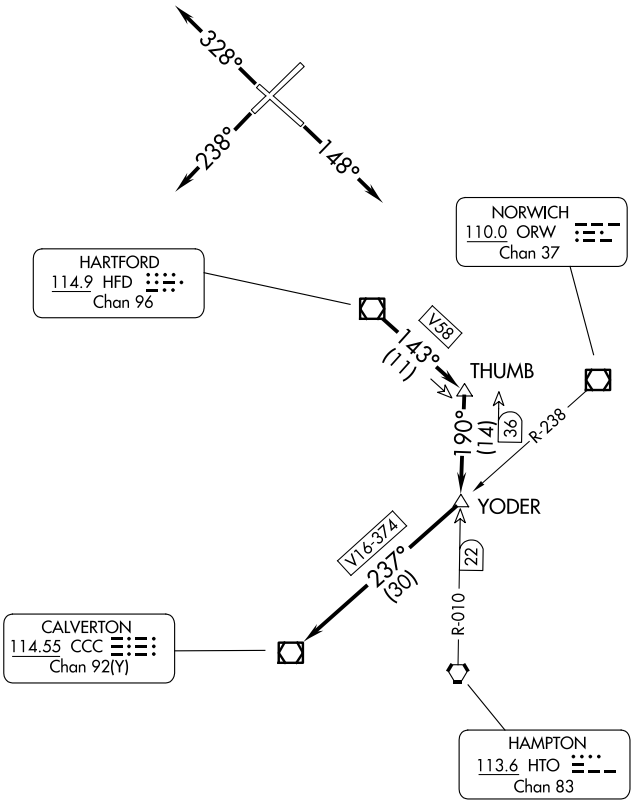
(CSTL9.CCC) 25275  
COASTAL NINE DEPARTURE

AL-460 (FAA)

BRADLEY INTL (BDL)  
WINDSOR LOCKS, CONNECTICUT

D-ATIS 118.15  
CLNC DEL  
121.75 322.3  
GND CON  
121.9 348.6  
CPDLC  
BRADLEY TOWER  
120.3 351.8  
BRADLEY DEP CON  
123.95 290.55 (061°-240°)  
125.35 281.5 (241°-060°)

TOP ALTITUDE:  
4000



NOTE: RADAR required.  
NOTE: Initial departure headings are predicated on avoiding noise sensitive areas. Flight crew awareness and compliance is important in minimizing noise impacts on surrounding communities.

TAKEOFF MINIMUMS:  
Rwys 6, 15, 24: Standard.  
Rwy 33: Standard with minimum climb of 340' per NM to 1000.

(NARRATIVE ON FOLLOWING PAGE)

NOTE: Chart not to scale.

COASTAL NINE DEPARTURE  
(CSTL9.CCC) 12AUG21

WINDSOR LOCKS, CONNECTICUT  
BRADLEY INTL (BDL)

NE-1, 25 DEC 2025 to 22 JAN 2026

NE-1, 25 DEC 2025 to 22 JAN 2026



DEPARTURE ROUTE DESCRIPTION

TAKEOFF RUNWAY 6: Climb on assigned heading for RADAR vectors to HFD VOR/DME, thence...

TAKEOFF RUNWAY 15: Climb on heading 148° or as assigned for RADAR vectors to HFD VOR/DME, thence...

TAKEOFF RUNWAY 24: Climb on heading 238° or as assigned for RADAR vectors to HFD VOR/DME, thence...

TAKEOFF RUNWAY 33: Climb on heading 328° or as assigned for RADAR vectors to HFD VOR/DME, thence...

...from over HFD VOR/DME proceed on HFD VOR/DME R-143 to THUMB INT, then on HTO VOR/DME R-010 to YODER INT, then on CCC VOR/DME R-057 to CCC VOR/DME, then on assigned route. Maintain 4000 or assigned altitude. Expect clearance to requested flight level 10 minutes after departure.

NE-1, 25 DEC 2025 to 22 JAN 2026

NE-1, 25 DEC 2025 to 22 JAN 2026