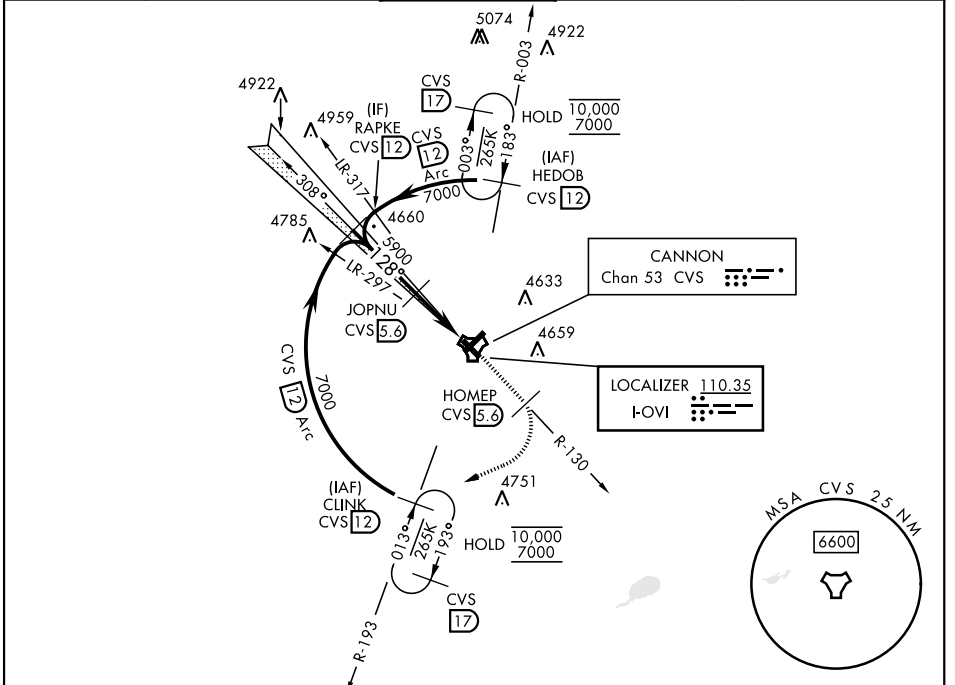


ILS or LOC RWY 13

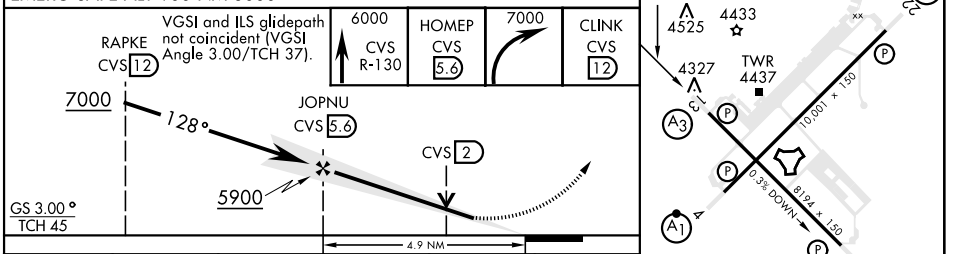
LOC I-OVI 110.35	APCH CRS 128°	Rwy ldg 8194 TDZE 4294 Arprt Elev 4295	[USAF]	CANNON AFB (KCVS)
----------------------------	-------------------------	--	--------	-------------------

RADAR or DME required. Missed approach requires use of RNAV or RADAR monitoring.		SSALR (A3)	MISSED APPROACH: Climb to 6000 out CVS TACAN R-1305.6 DME (HOMEPI) then climbing right turn to 7000 intercept CVS R-193 to 12 DME (CLINK) and hold.
* When ALS inop, increase vis to 3/4 mile. ** When ALS inop, increase CAT AB vis to 1 mile; CAT CDE vis to 1 3/8 miles.			

ATIS 119.1 269.9	CANNON APP CON 118.425 352.1	CANNON TOWER 120.4 270.25	GND CON 121.9 275.8	CLNC DEL 120.2 293.225
----------------------------	--	-------------------------------------	-------------------------------	----------------------------------



ELEV 4295	TDZE 4294
-----------	-----------



CATEGORY	A	B	C	D	E
S-ILS 13 *	4544-1/2		250	(300-1/2)	
S-LOC 13**	4760-1/2 466 (500-1/2)		4760-1 466 (500-1)		
CIRCLING	4840-1 545 (600-1)		4860-1 1/2 565(600-1 1/2)		5000-2 1/4 705(800-2 1/4)
			5020-2 1/2 725(800-2 1/2)		

HIRL all rwys	FAF to MAP 4.9 NM				
Knots	60	90	120	150	180
Min:Sec	4:54	3:16	2:27	1:58	1:38

ILS or LOC RWY 13

SW-1, 25 DEC 2025 to 22 JAN 2026

SW-1, 25 DEC 2025 to 22 JAN 2026