

ILS or LOC RWY 31

LOC I-BNN 108.3	APCH CRS 308°	Rwy Idg 8194	TDZE 4270	Arprt Elev 4295
---------------------------	-------------------------	------------------------	---------------------	---------------------------

[USAF]

CANNON AFB (KCVS)

ATC RADAR or DME required. Missed approach requires use of RNAV or ATC RADAR monitoring.

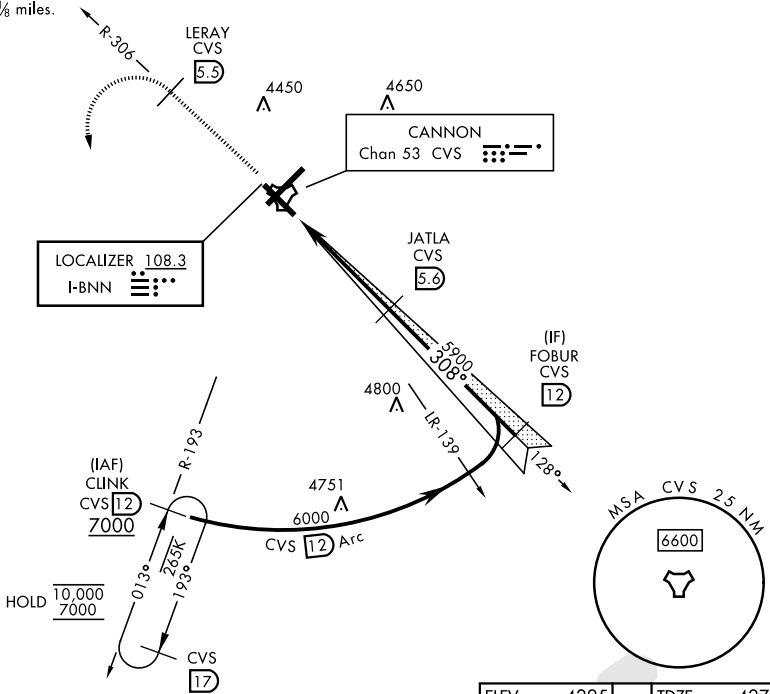


MISSED APPROACH: Climb to 6000 out CVS TACAN R-306 to 5.5 DME (LERAY) then turn left climbing to 7000 intercept CVS R-193 to 12 DME (CLINK) and hold.

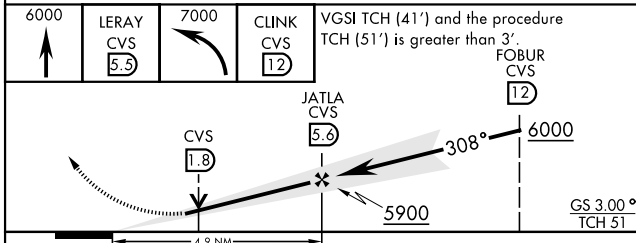
When ALS inop, increase vis to 1/4 mile.

ATIS 119.1 269.9	CANNON APP CON 118.425 352.1	CANNON TOWER 120.4 270.25	GND CON 121.9 275.8	CLNC DEL 120.2 293.225
----------------------------	--	-------------------------------------	-------------------------------	----------------------------------

** When ALS inop, increase CAT AB vis to 1 mile, CAT CDE vis to 1 1/8 miles.



EMERG SAFE ALT 100 NM 9000



ELEV	4295	TDZE	4270
HIRL all rwys			
FAF to MAP 4.9 NM			
Knots	60	90	120 150 180
Min:Sec	4:54	3:16	2:27 1:58 1:38

CATEGORY	A	B	C	D	E
S-ILS 31*	4470-1/2		200	(200-1/2)	
S-LOC 31**	4660-1/2 390 (400-1/2)		4660-5/8 390 (400-5/8)		
CIRCLING	4840-1 545 (600-1)		4860-1 1/2 565 (600-1 1/2)	5000-2 1/4 705 (800-2 1/4)	5020-2 1/2 725 (800-2 1/2)

ILS or LOC RWY 31

SW-1, 25 DEC 2025 to 22 JAN 2026

SW-1, 25 DEC 2025 to 22 JAN 2026