

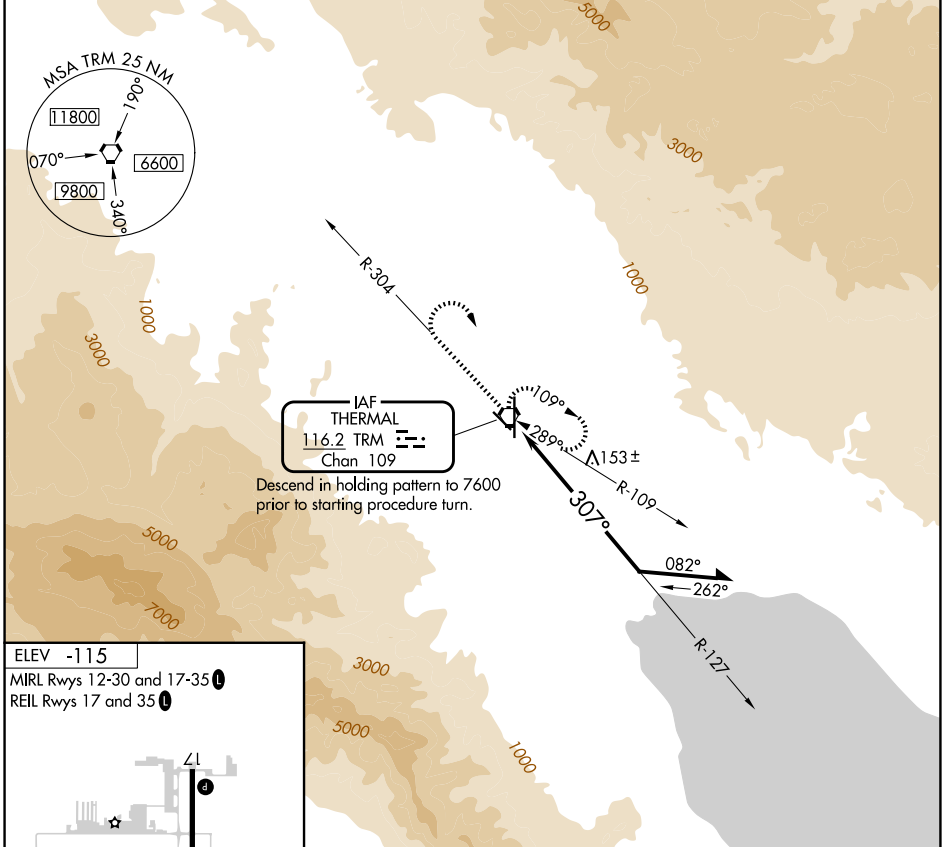
VORTAC TRM 116.2 Chan 109	APP CRS 307°	Rwy Ldg TDZE Apt Elev N/A N/A -115
---	------------------------	--

VOR-A

JACQUELINE COCHRAN RGNL (TRM)

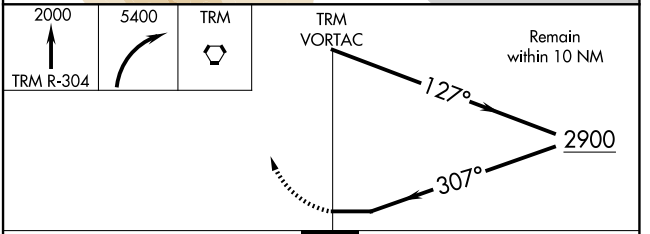
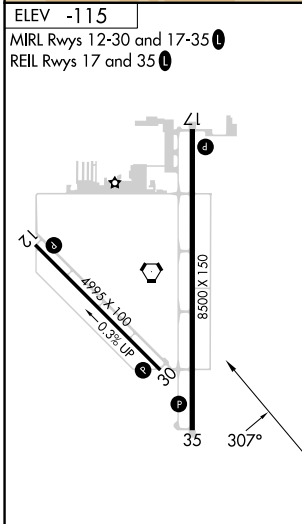
MISSED APPROACH: Climb to 2000 on TRM VORTAC R-304 then climbing right turn to 5400 direct TRM VORTAC and hold, continue climb-in-hold to 5400.

ASOS 118.325	SOCAL APP CON 135.275 251.1	CLNC DEL 120.225	UNICOM 123.0 (CTAF)
------------------------	---------------------------------------	----------------------------	-------------------------------



IAF
THERMAL
116.2 TRM
Chan 109

Descend in holding pattern to 7600 prior to starting procedure turn.



CATEGORY	A	B	C	D
CIRCLING	1400-1¼ 1515 (1600-1¼)	1400-1½ 1515 (1600-1½)	1400-3	1515 (1600-3)

VOR-A

SW-3, 25 DEC 2025 to 22 JAN 2026

SW-3, 25 DEC 2025 to 22 JAN 2026