

WAAS CH 86919 W17A	APP CRS 174°	Rwy Ldg 5997 TDZE 1073 Apt Elev 1073
--	------------------------	---

RNAV (GPS) RWY 17

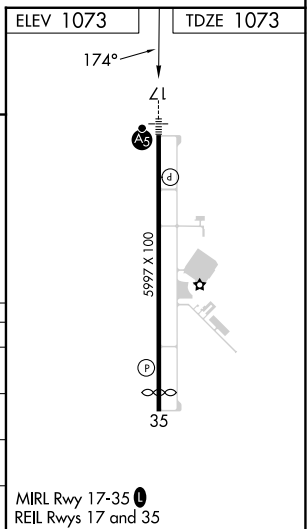
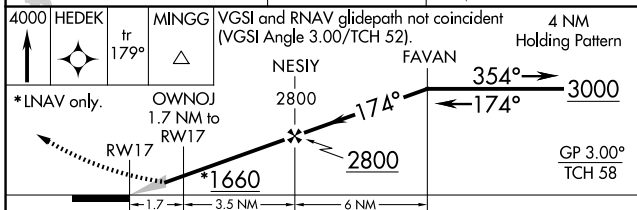
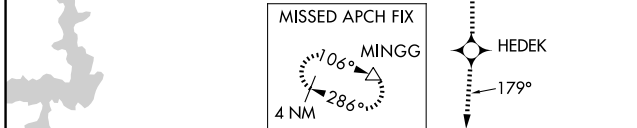
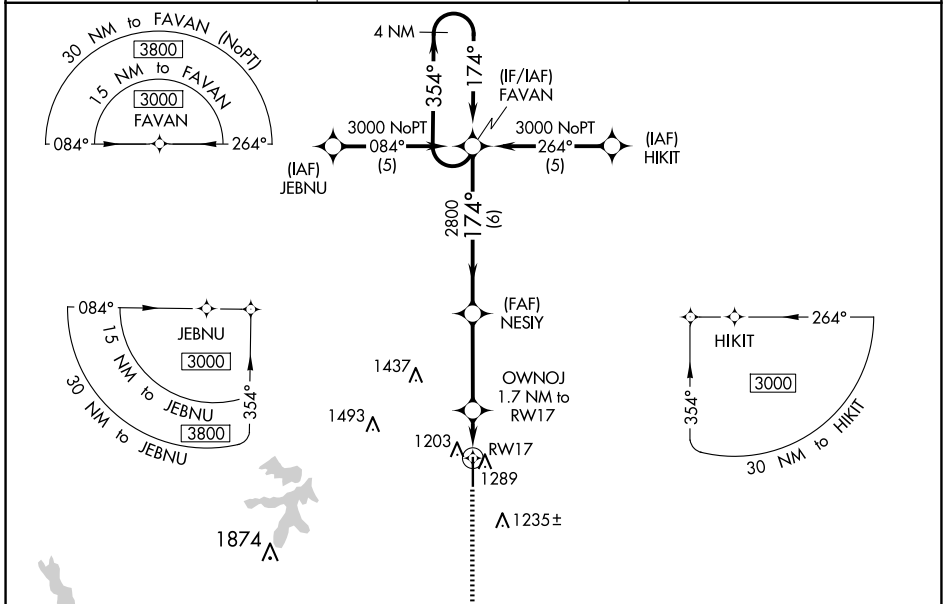
SHAWNEE RGNL (SNL)

▼ Baro-VNAV NA when using Seminole altimeter setting. For uncompensated Baro-VNAV systems, LNAV/VNAV NA below -17°C (2°F) or above 54°C (130°F).
▲ DME/DME RNP-0.3 NA. When local altimeter setting not received, use Seminole altimeter setting: increase LPV DA to 1313 feet; increase LNAV/VNAV DA to 1487 feet and visibility ¼ SM; increase all MDAs 40 feet and visibility Cat C ¼ SM.



MISSED APPROACH: Climb to 4000 direct HEDEK and on track 179° to MINGG and hold.

AWOS-3PT 118.275	OKE CITY APP CON 120.45 288.325	UNICOM 122.7 (CTAF)
----------------------------	---	-------------------------------



CATEGORY	A	B	C	D
LPV DA	1273-½	200 (200-½)		NA
LNAV/VNAV DA	1447-¾	374 (400-¾)		NA
LNAV MDA	1540-½	467 (500-½)	1540-¾ 467 (500-¾)	NA
C CIRCLING	1600-1	527 (600-1)	1640-1½ 567 (600-1½)	NA

SC-1, 25 DEC 2025 to 22 JAN 2026

SC-1, 25 DEC 2025 to 22 JAN 2026