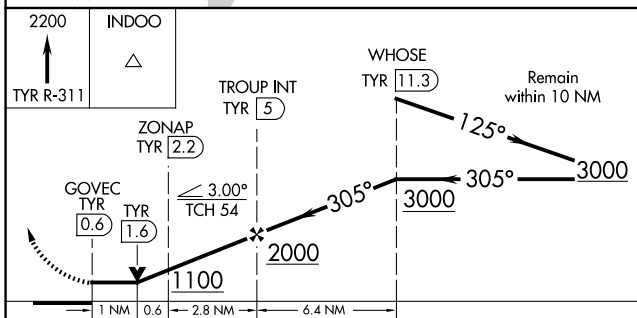
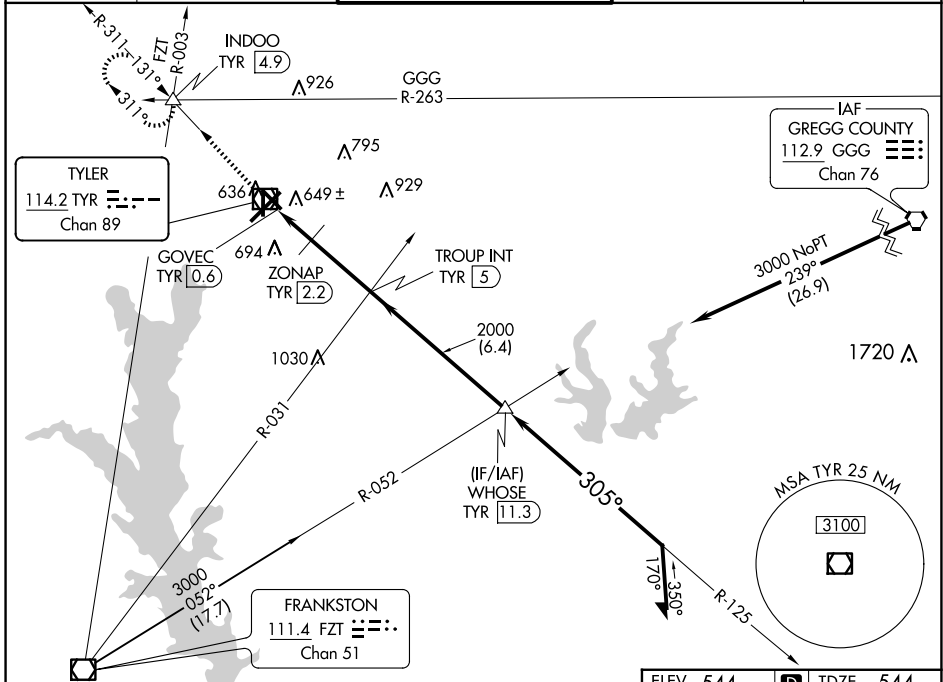


VOR/DME TYR	APP CRS	Rwy Idg	5198
114.2	305°	TDZE	544
Chan 89		Apt Elev	544

VOR RWY 31

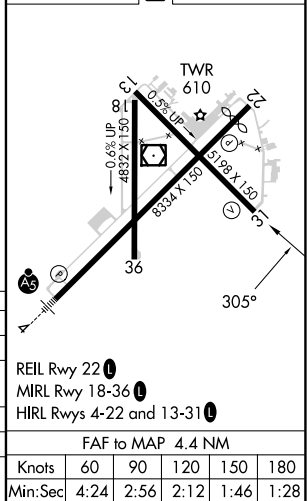
TYLER POUNDS RGNL (TYR)

Rwy 31 helicopter visibility reduction below 3/4 SM NA.		MISSED APPROACH: Climb to 2200 on TYR VOR/DME R-311 to INDOO INT/4.9 DME and hold.		
ATIS	LONGVIEW APP CON*	POUNDS TOWER*	GND CON	UNICOM
126.25	128.75 379.15	120.1 (CTAF) 257.8	121.9	122.95



ELEV 544	TDZE 544
----------	----------

CATEGORY	A	B	C	D
S-31	1100-1	556 (600-1)	1100-1 1/2	556 (600-1 1/2)
CIRCLING	1100-1	556 (600-1)	1160-1 1/4	1280-2 1/4
			616 (700-1 1/4)	736 (800-2 1/4)
ZONAP FIX MINIMUMS (DME REQUIRED)				
S-31	920-1 376 (400-1)			
CIRCLING	980-1	1020-1	1160-1 1/4	1280-2 1/4
	436 (500-1)	476 (500-1)	616 (700-1 1/4)	736 (800-2 1/4)



SC-2, 25 DEC 2025 to 22 JAN 2026

SC-2, 25 DEC 2025 to 22 JAN 2026