

LOC I-PAH 108.5	APP CRS 045°	Rwy Ldg 6500 TDZE 411 Apt Elev 411
---------------------------	------------------------	---

ILS or LOC RWY 5

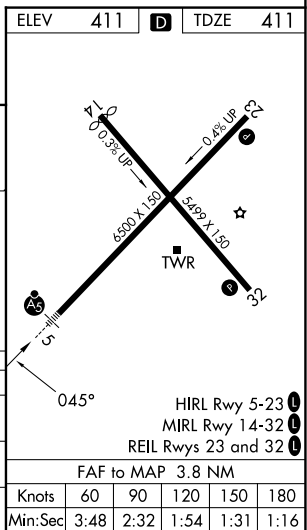
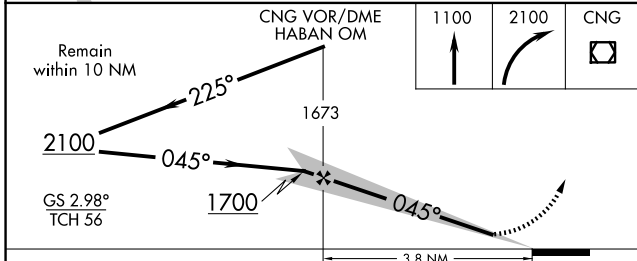
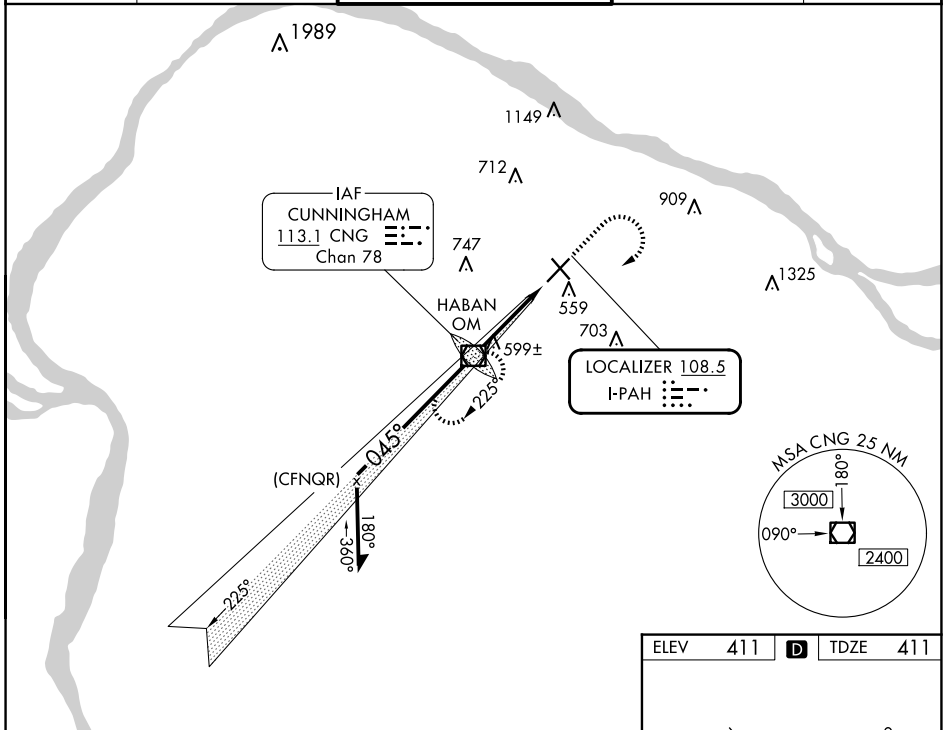
BARKLEY RGNL (PAH)

⚠ When local altimeter setting not received, use Mayfield altimeter setting and increase DA to 672, and all MDA 80 feet. Increase S-LOC 5 Cat C, D visibility 1/8 SM. For inop ALS when using Mayfield altimeter setting, increase S-ILS 5 visibility to 3/8 SM, all Cats.



MISSED APPROACH: Climb to 1100 then climbing right turn to 2100 direct CNG VOR/DME and hold.

ASOS 118.375	MEMPHIS CENTER 133.65 292.15	PADUCAH TOWER ★ 119.6 (CTAF) 306.9	GND CON 121.7 306.9	UNICOM 122.95
------------------------	--	--	-------------------------------	-------------------------



CATEGORY	A	B	C	D
S-ILS 5	611-1/2 200 (200-1/2)			
S-LOC 5	860-1/2	449 (500-1/2)	860-7/8	449 (500-7/8)
CIRCLING	900-1	489 (500-1)	920-1 1/2 509 (600-1 1/2)	1100-2 1/4 689 (700-2 1/4)

SE-1, 25 DEC 2025 to 22 JAN 2026

SE-1, 25 DEC 2025 to 22 JAN 2026