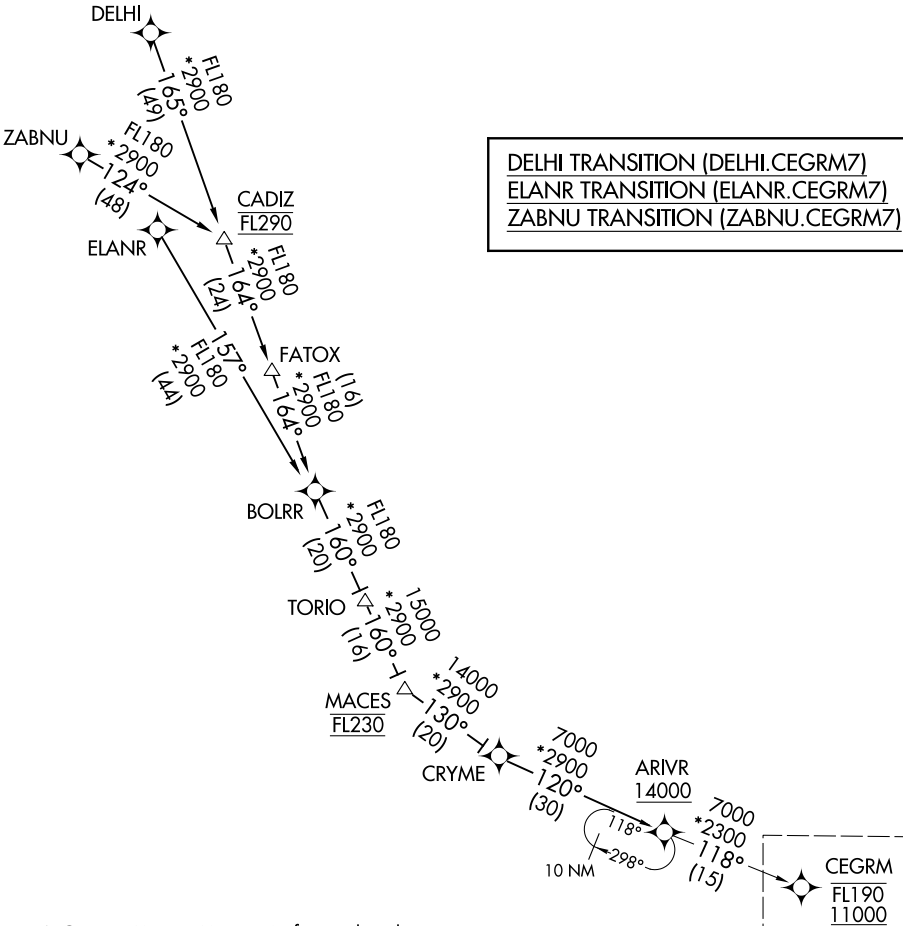


CINCINNATI APP CON  
119.7 363.15 (090°-269°)  
123.875 363.15 (270°-089°)  
D-ATIS 134.375

RNAV 1 - DME/DME/IRU or GPS.

RADAR required.



SE-1, 25 DEC 2025 to 22 JAN 2026

SE-1, 25 DEC 2025 to 22 JAN 2026

NOTE: Chart not to scale.

(CONTINUED ON FOLLOWING PAGE)

CINCINNATI APP CON  
119.7 363.15 (090°-269°)  
123.875 363.15 (270°-089°)  
D-ATIS 134.375

RNAV 1 - DME/DME/IRU or GPS.

RADAR required.

### ARRIVAL ROUTE DESCRIPTION

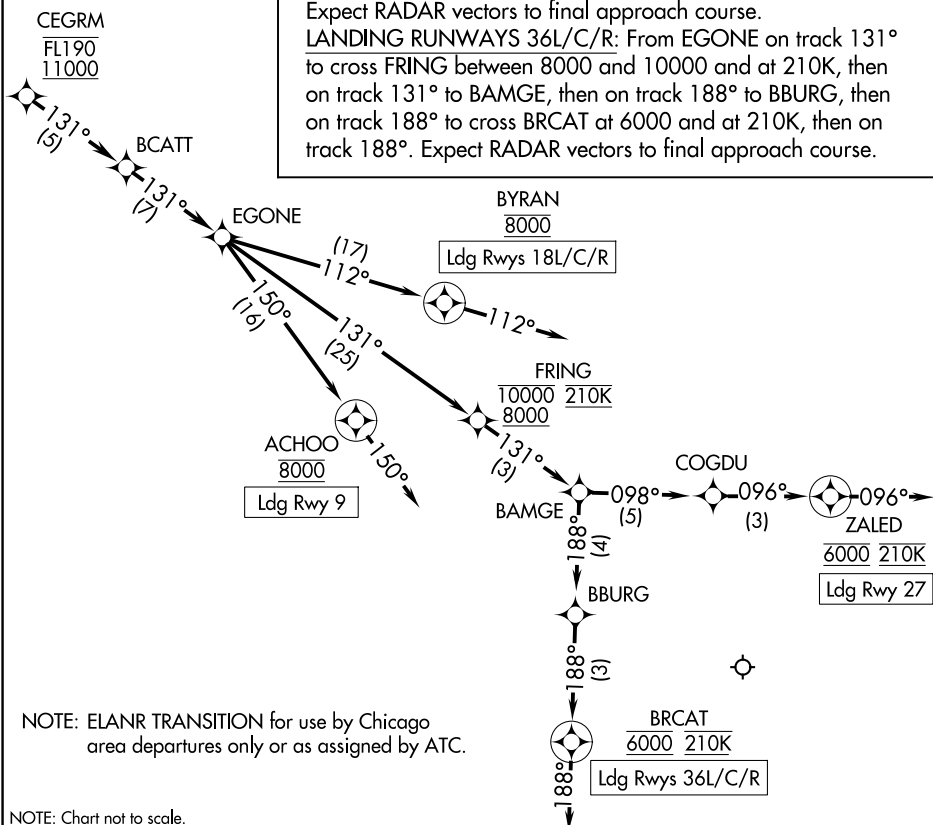
From CEGRM on track 131° to BCATT, then on track 131° to EGONE.

LANDING RUNWAY 9: From EGONE on track 150° to cross ACHOO at 8000, then on track 150°. Expect RADAR vectors to final approach course.

LANDING RUNWAYS 18L/C/R: From EGONE on track 112° to cross BYRAN at 8000, then on track 112°. Expect RADAR vectors to final approach course.

LANDING RUNWAY 27: From EGONE on track 131° to cross FRING between 8000 and 10000 and at 210K, then on track 131° to BAMGE, then on track 098° to COGDU, then on track 096° to cross ZALD at 6000 and at 210K, then on track 096°. Expect RADAR vectors to final approach course.

LANDING RUNWAYS 36L/C/R: From EGONE on track 131° to cross FRING between 8000 and 10000 and at 210K, then on track 131° to BAMGE, then on track 188° to cross BBRG at 6000 and at 210K, then on track 188°. Expect RADAR vectors to final approach course.



SE-1, 25 DEC 2025 to 22 JAN 2026

SE-1, 25 DEC 2025 to 22 JAN 2026