

PENSACOLA, FLORIDA

TACAN Y RWY 7L

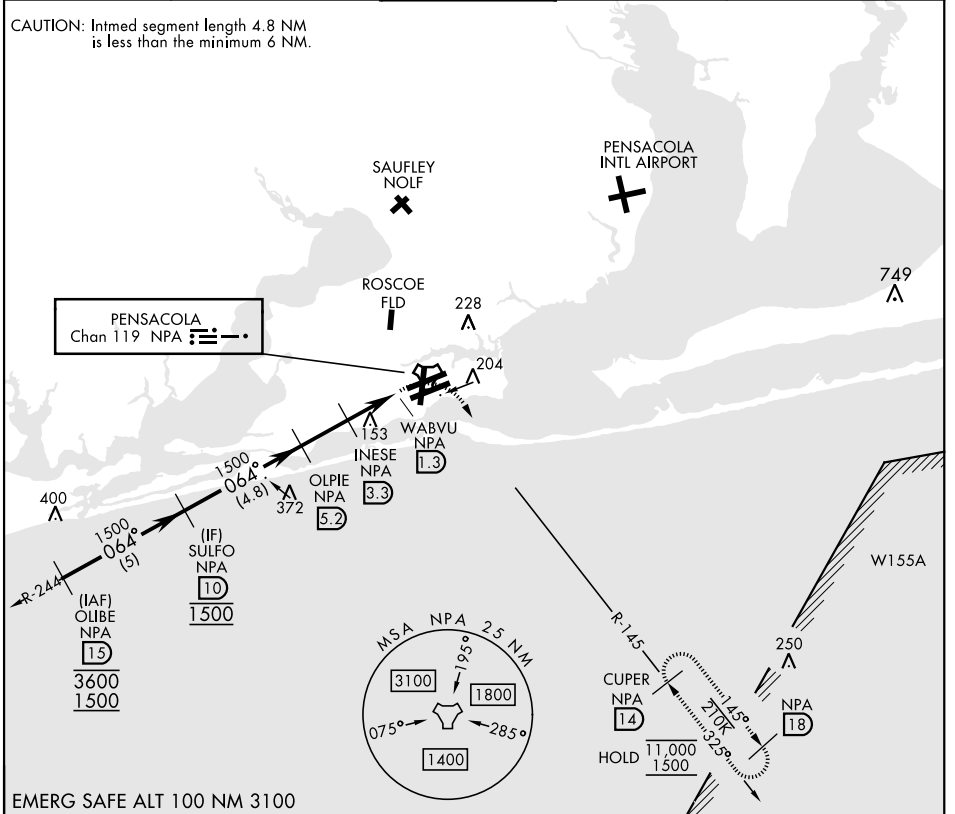
TACAN NPA Chan 119	APCH CRS 064°	Rwy Idg TDZE Arprt Elev	8001 23 28
-----------------------	-------------------------	-------------------------------	---------------------------------------

[USN] PENSACOLA NAS (FORREST SHERMAN FLD) (KNPA)

RADAR required
 ▼ * When ALS inop, increase CAT AB vis to 1 mile, CAT CDE vis to 1 1/8 miles.

ALS F-1
 MISSED APPROACH: Climbing right turn to 1500 via NPA TACAN R-145 to CUPER and hold.

ATIS 124.35 266.8	APP CON 120.65 270.8	SHERMAN TOWER 120.7 340.2	GND CON 121.7 336.4	CLNC DEL 134.1 268.7	ASR/PAR
-----------------------------	--------------------------------	-------------------------------------	-------------------------------	--------------------------------	---------



PENSACOLA, FLORIDA 30° 21' N-87° 19' W PENSACOLA NAS (FORREST SHERMAN FLD) (KNPA)

Amdt 1 12JUN25

TACAN Y RWY 7L

SE-3, 25 DEC 2025 to 22 JAN 2026

SE-3, 25 DEC 2025 to 22 JAN 2026

