

LOC I-RAL <b>110.9</b>	APP CRS <b>089°</b>	Rwy Ldg TDZE Apt Elev	<b>5401</b> <b>795</b> <b>819</b>
---------------------------	------------------------	-----------------------------	---

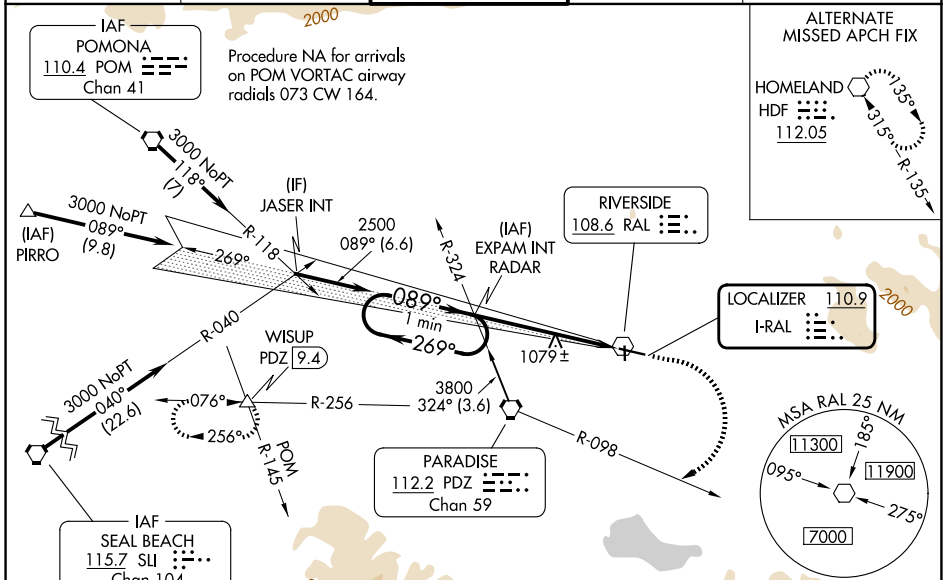
# ILS or LOC RWY 9

RIVERSIDE (RAL)

**⚠** Circling NA north of Rwy 9-27 for Cat D. When local altimeter setting not received, use Chino altimeter setting and increase all DA 46 feet and all MDA 60 feet, increase S-ILS 9 visibility 1/8 mile all Cats, S-LOC 9 Cat C/D visibility 1/8 mile. Autopilot coupled approach NA below 1192.  
\*Missed approach requires minimum climb of 270 feet per NM to 2500.

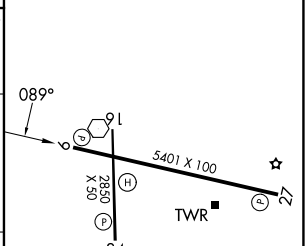
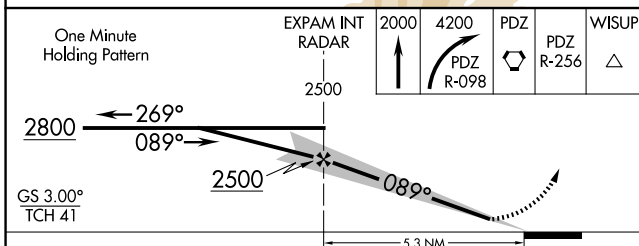
**MISSED APPROACH:** Climb to 2000 then climbing right turn to 4200 on PDZ VORTAC R-098 to PDZ VORTAC then on PDZ VORTAC R-256 to WISUP INT/PDZ VORTAC 9.4 DME and hold.

ATIS <b>128.8</b>	SOCAL APP CON <b>135.4 377.125</b>	<b>RIVERSIDE TOWER *</b> <b>121.0 (CTAF) 0 257.8</b>	GND CON <b>124.12</b>	UNICOM <b>122.95</b>
----------------------	---------------------------------------	---	--------------------------	-------------------------



Procedure NA for arrivals on SU VORTAC airway radials 075 CW 080.

ELEV 819	TDZE 795
----------	----------



CATEGORY	A	B	C	D
S-ILS 9*		995-3/4	200 (200-3/4)	
S-ILS 9		1131-1	336 (400-1)	
S-LOC 9*	1280-1	485 (500-1)	1280-1 3/8	485 (500-1 3/8)
S-LOC 9	1360-1	565 (600-1)	1360-1 5/8	565 (600-1 5/8)
CIRCLING	1360-1 541 (600-1)	1680-1 1/4 861 (900-1 1/4)	1800-3 981 (1000-3)	1960-3 1141 (1200-3)

MIRL Rwy 9-27 and 16-34

	F knots	60	90	120	150	180
FAF to MAP 5.3 NM	Knots	60	90	120	150	180
	Min:Sec	5:18	3:32	2:39	2:07	1:46

SW-3, 25 DEC 2025 to 22 JAN 2026

SW-3, 25 DEC 2025 to 22 JAN 2026