

MHOMS THREE ARRIVAL (RNAV) Transition Routes

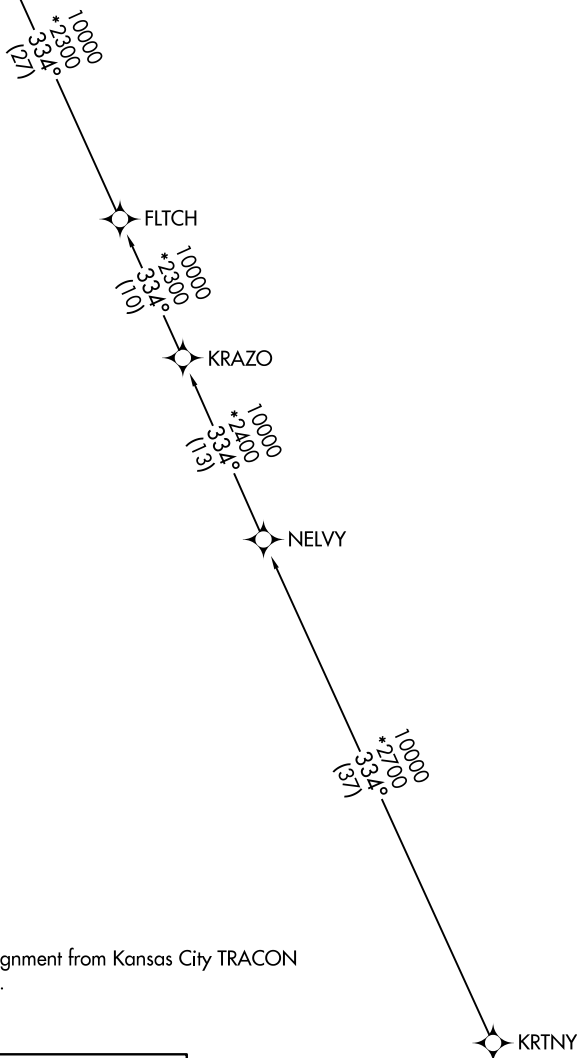
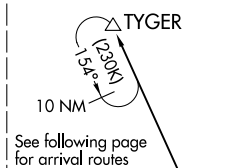
AL-780 (FAA)

KANSAS CITY INTL (MCI)
KANSAS CITY, MISSOURI

KANSAS CITY APP CON
120.95 318.1
D-ATIS
128.375

RNAV 1 - DME/DME/IRU or GPS.

RADAR required.



NOTE: Expect runway assignment from Kansas City TRACON upon initial contact.

NOTE: Chart not to scale.

KRTNY TRANSITION (KRTNY.MHOMS3)

NELVY TRANSITION (NELVY.MHOMS3)

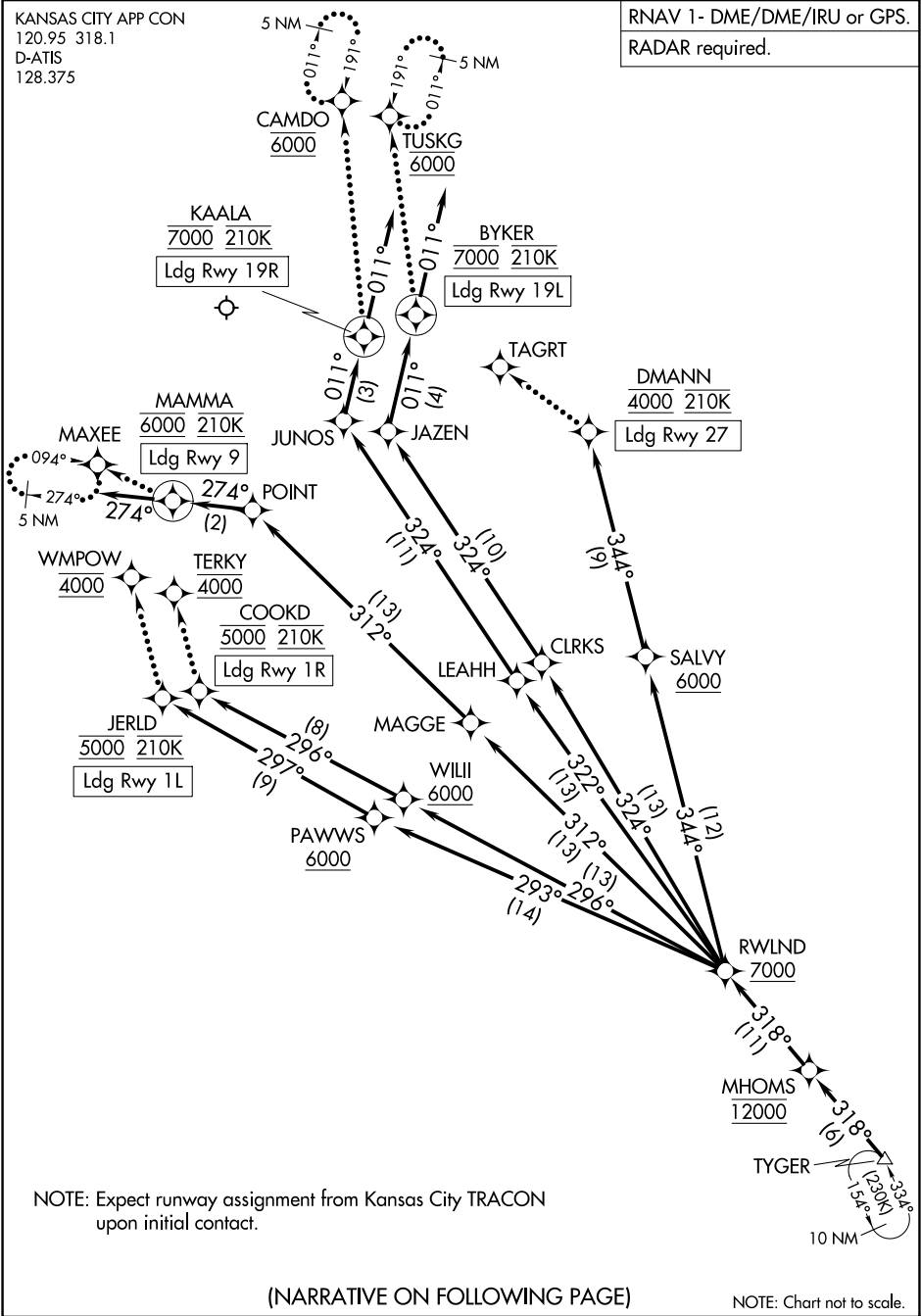
(CONTINUED ON FOLLOWING PAGE)

MHOMS THREE ARRIVAL (RNAV) Transition Routes

(TYGER.MHOMS3) 10AUG23

KANSAS CITY, MISSOURI
KANSAS CITY INTL (MCI)

NC-3, 25 DEC 2025 to 22 JAN 2026



ARRIVAL ROUTE DESCRIPTION

From TYGER on track 318° to cross MHOMS at 12000, then on track 318° to cross RWLND at or above 7000.

LANDING RUNWAY 1L: From RWLND on track 293° to cross PAWWS at or above 6000, then on track 297° to cross JERLD at 5000 and at 210K. Expect RNP Z RWY 1L approach, or expect RADAR vectors to final approach course for ILS or GPS RWY 1L approaches.

LANDING RUNWAY 1R: From RWLND on track 296° to cross WILII at or above 6000, then on track 296° to cross COOKD at 5000 and at 210K. Expect RNP Z RWY 1R approach, or expect RADAR vectors to final approach course for ILS or GPS RWY 1R approaches.

LANDING RUNWAY 9: From RWLND on track 312° to MAGGE, then on track 312° to POINT, then on track 274° to cross MAMMA at 6000 and at 210K, then on track 274°. Expect RADAR vectors to final approach course for RNP, GPS, or ILS RWY 9 approach.

LANDING RUNWAY 19L: From RWLND on track 324° to CLRKS, then on track 324° to JAZEN, then on track 011° to cross BYKER at 7000 and at 210K, then on track 011°. Expect RADAR vectors to final approach course for RNP, GPS, or ILS RWY 19L approach.

LANDING RUNWAY 19R: From RWLND on track 322° to LEAHH, then on track 324° to JUNOS, then on track 011° to cross KAALA at 7000 and at 210K, then on track 011°. Expect RADAR vectors to final approach course for RNP, GPS, or ILS RWY 19R approach.

LANDING RUNWAY 27: From RWLND on track 344° to cross SALVY at or above 6000, then on track 344° to cross DMANN at 4000 and at 210K. Expect RNP Z RWY 27 approach, or expect RADAR vectors to final approach course for ILS or GPS RWY 27 approaches.

LOST COMMUNICATIONS

RUNWAY 1L: After JERLD proceed to WMPOW at 4000, then on ILS or LOC RWY 1L approach.

RUNWAY 1R: After COOKD proceed to TERKY at 4000, then on ILS or LOC RWY 1R approach.

RUNWAY 9: After MAMMA maintain 6000, proceed to MAXEE and hold.

RUNWAY 19L: After BYKER proceed to TUSKG at 6000 and hold.

RUNWAY 19R: After KAALA proceed to CAMDO at 6000 and hold.

RUNWAY 27: After DMANN maintain 4000, proceed to TAGRT, then on ILS or LOC RWY 27 approach.