

OXNARD, CALIFORNIA

RNAV (GPS) RWY 3

WAAS CH 61626 W03A	APCH CRS 032°	Rwy ldg TDZE Arprt Elev	11,102 10 13
---------------------------------	-------------------------	-------------------------------	---

(USN)

POINT MUGU NAS (NAVAL BASE VENTURA CO) (KNTD)

RNP APCH - GPS
 * When ALS inop, increase vis to 1 mile.
 ** Circling not authorized SE of Rwy 3-21.

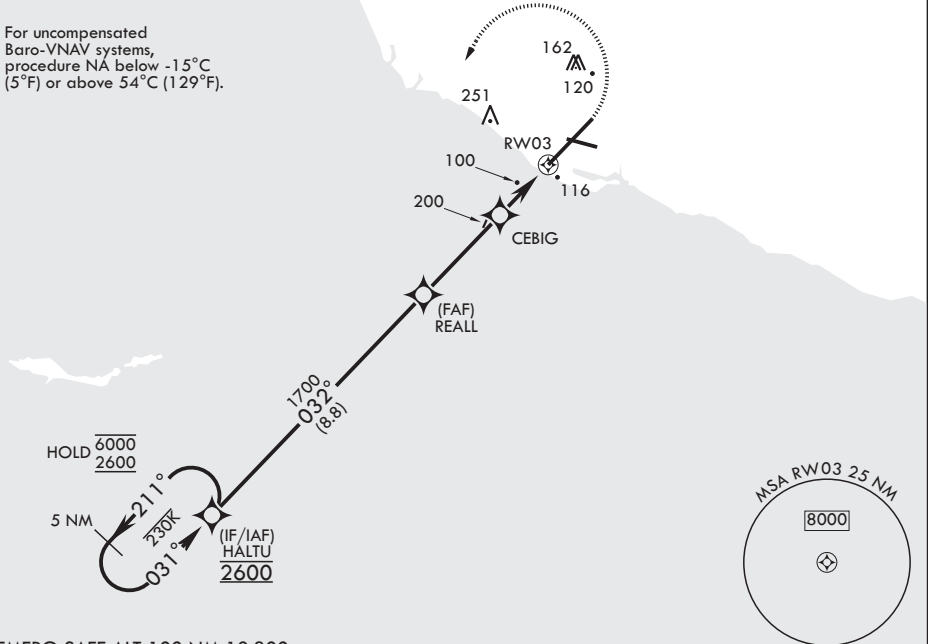
SALSF MISSED APPROACH: Climb to 600 then climbing left turn to 2600 direct HALTU and hold.

ATIS* 125.55 363.05	APP CON/DEP CON* 128.65 307.275	TOWER* 124.85 290.375	GND CON 121.6 360.2	ASR/PAR
-------------------------------	---	---------------------------------	-------------------------------	---------

Circling:

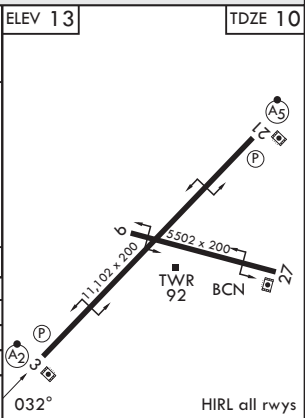
- CAT A remain within 1.3 NM
- CAT B remain within 1.5 NM
- CAT C remain within 1.7 NM
- CAT D remain within 2.3 NM

For uncompensated Baro-VNAV systems, procedure NA below -15°C (5°F) or above 54°C (129°F).



EMERG SAFE ALT 100 NM 12,300

5 NM Holding Pattern	HALTU	600	2600	HALTU	ELEV 13	TDZE 10
6000	211°	032°	REALL	CEBIG	1700	680
2600	031°	032°	REALL	CEBIG	1700	680
GP 3.00°	TCH 46	032°	REALL	CEBIG	1700	680
			3.2 NM	2 NM		
CATEGORY	A	B	C	D		
LPV DA	210-¾	200	(200-¾)			
LNAV/VNAV DA*	371-¾	361	(400-¾)			
LNAV MDA*	380-¾	370	(400-¾)			
CIRCLING**	420-1 407 (500-1)	520-1 507 (600-1)	520-1½ 507 (600-1½)	580-2 567 (600-2)		



SW-3, 25 DEC 2025 to 22 JAN 2026

SW-3, 25 DEC 2025 to 22 JAN 2026

OXNARD, CALIFORNIA

34°07'N - 119°07'W POINT MUGU NAS (NAVAL BASE VENTURA CO) (KNTD)

Amdt 7 27NOV25

RNAV (GPS) RWY 3