


LOC/DME I-EAU <b>109.5</b> Chan <b>32</b>	APP CRS <b>224°</b>	Rwy Ldg TDZE Apt Elev	<b>7301</b> <b>913</b> <b>913</b>
---	------------------------	-----------------------------	---

# ILS or LOC RWY 22

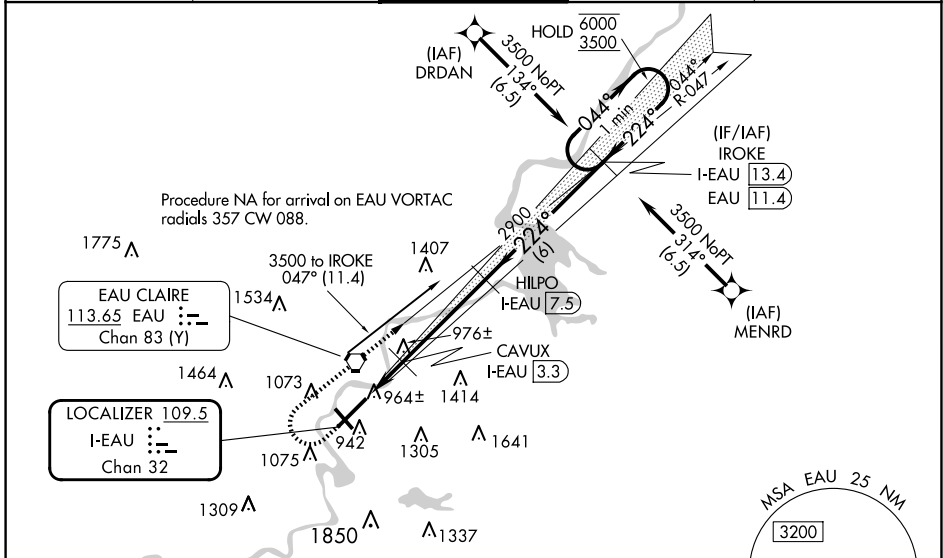
CHIPPEWA VALLEY RGNL (EAU)

From DRDAN and MENRD RNAV-1 GPS required.  
DME required.

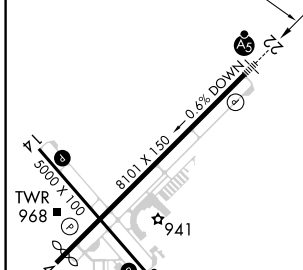
**⚠** For inop ALS increase S-LOC 22 Cat C and D visibility to ¾ SM. For inop ALS when using Rice Lake altimeter setting, increase S-ILS 22 all Cats visibility to 1 SM. When local altimeter setting not received, use Rice Lake altimeter setting and increase DA 110 feet and all MDA 120 feet, increase S-LOC 22 Cat C and D and Circling Cat C visibility ¼ SM. VDP NA when using Rice Lake altimeter setting.

**MALSR**  MISSED APPROACH: Climb to 1600 then climbing right turn to 3500 on EAU VORTAC R-047 to IROKE/I-EAU LOC/DME 13.4 DME and hold.

ATIS <b>126.025</b>	MINNEAPOLIS CENTER <b>125.3 335.6</b>	EAU CLAIRE TOWER ★ <b>118.575 (CTAF) 0</b>	GND CON <b>120.925</b>	UNICOM <b>122.95</b>
------------------------	--	---	---------------------------	-------------------------



ELEV 913	<b>D</b>	TDZE 913
HIRL Rwy 4-22		
MIRL Rwy 14-32		
REIL Rwy 4 and 14		



Use I-EAU DME when on the localizer course.

One Minute Holding Pattern

\* LOC only

I-EAU 1.4 → I-EAU 2.2 → CAVUX I-EAU 3.3 → HILPO I-EAU 7.5 → IROKE I-EAU 13.4 → 044° → 6000 / 3500

224° → 2900 → 224°

GS 3.00° TCH 50

0.8 → 1.1 NM → 4.2 NM → 6 NM

FAF to MAP 6.1 NM				
Knots	60	90	120	150
Min:Sec	6:06	4:04	3:03	2:26
<b>CIRCLING</b>	1480-1 567 (600-1)	1540-1 627 (700-1)	1660-2½ 747 (800-2¼)	2200-3 1287 (1300-3)

EC-3, 25 DEC 2025 to 22 JAN 2026

EC-3, 25 DEC 2025 to 22 JAN 2026